



# START OF *Life*



# START OF *Life*



**BABYCAT MILK**

**MOTHER &  
BABYCAT**

**KITTEN**



**PUPPY PROTECH**

Neonatal milk for puppies

**BABYDOG MILK**

**STARTER**  
MOTHER & BABYDOG

**MINI**

**STARTER**  
MOTHER & BABYDOG

**PUPPY**

**MINI**

**STARTER**  
MOTHER & BABYDOG

**MEDIUM**

**PUPPY**

**MEDIUM**

**STARTER**  
MOTHER & BABYDOG

**MAXI**

**PUPPY**

**MAXI**

**PUPPY**

**GIANT**

**JUNIOR**

**GIANT**

This resource has been produced with the greatest care and incorporates the most up-to-date scientific information and research findings. We recommend that you refer to our packaging as the primary reference for product information as this can change with time. Bearing in mind the diversity and complexity of clinical cases in dogs and cats, it is important to note that the suggestions in this resource for further tests and therapeutic options cannot be exhaustive. Under no circumstances should the treatments and dietary solutions suggested here replace examination by a veterinary surgeon.

The publishers and the authors will accept no responsibility for the failure of any of the treatments or nutritional solutions put forward in this resource. Not for use in Canada and in USA.

While the information is considered to be true and correct at the date of publication (**June 2023**), changes in circumstances after the time of publication may impact on the accuracy of the information. Please refer to the digital copy available online at [vetportal.royalcanin.co.uk](http://vetportal.royalcanin.co.uk) for the most recent product data.

# BABYCAT MILK



**1**  
STAGE

Available in  
**300g pack:**  
3 x 100g sachets

## NURSING KIT INCLUDED



### ANALYTICAL CONSTITUENTS

Moisture	2.5%
Protein	33%
Fat content	39%
Crude ash	5%
NFE	19.5%

### AMINO ACIDS (TOTAL)

Taurine (%)	0.19
-------------	------

### MINERALS (TOTAL)

Calcium (%)	1.2	Potassium (%)	0.7
Phosphorus (%)	0.8	Magnesium (%)	0.1
Sodium (%)	0.2	Copper (mg/kg)	15
Chloride (%)	0.5	Zinc (mg/kg)	180

### VITAMINS (TOTAL)

Vit. A [IU/kg]	30000	Vit. E [mg/kg]	900
Vit. D3 [IU/kg]	1500	Vit. C [mg/kg]	300

### OTHER GUARANTEES (TOTAL)

Dietary fibre (%)	0.5	EPA + DHA (%)	0.15
Omega 6 (%)	3.4	L-carnitine (mg/kg)	0
Omega 3 (%)	0.5	Glucosamine + Chondroitin (mg/kg)	0
DHA (mg/kg)	0.05	Starch (%)	0
Lactose (%)	19		

### CALCULATED METABOLISABLE ENERGY (TOTAL)

Energy_NRC 85 (kcal/kg)	5188
Energy_NRC 2006 (CF) (kcal/kg)	5361

## START OF LIFE

### RECOMMENDED FOR

- From birth to weaning - 1st age milk



### BRAIN DEVELOPMENT WITH DHA

Formulated with DHA an omega-3 fatty acid to support the kitten's brain development.



### IMMUNE SYSTEM HEALTH

Supports the development of the kitten's healthy immune system.



### MICROBIOME SUPPORT

Combination of prebiotics and highly digestible proteins to help promote a healthy balance of intestinal microbiota for digestive health. This formula is particularly suitable for the kitten's immature digestive system to support growth and healthy digestion with adapted content of lactose and without starch.



### EASY TO RECONSTITUTE

The BABYCAT MILK formula dissolves instantly, creating a totally homogeneous milk replacer (see user guide).

AGE	Number of meals/kitten/day	ml of reconstituted milk/kitten/meal		Milk powder (in measuring spoon)	
		Min	Max	Min	Max
Week 1	7	2	4	1/10	2/10
Week 2	6	5	10	3/10	5/10
Week 3	5	10	15	5/10	8/10
Week 4	5	10	15	5/10	8/10

### COMPOSITION

Composition: Milk retentate, milk fat, refined palm oil (from sustainable sources), whey protein, refined soya oil, refined copra oil, minerals, fructo-oligosaccharides (0.51%), fish oil (source of DHA), fungi oil.

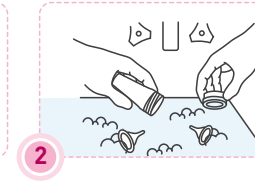
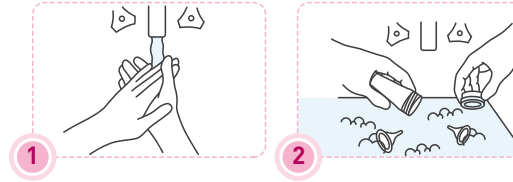


### ADDITIVES (KG)\*\*\*

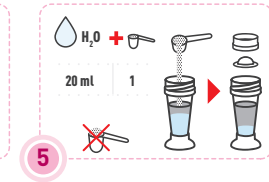
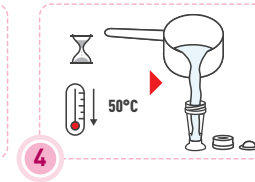
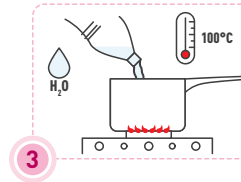
Nutritional additives: Vitamin A: 25000 IU, Vitamin D3: 1500 IU, Iron (3b103): 100 mg, Iodine (3b201, 3b202): 4 mg, Copper (3b405, 3b406): 15 mg, Manganese (3b502, 3b504): 80 mg, Zinc (3b603, 3b605, 3b606): 180 mg, Selenium (3b801, 3b811, 3b812): 0.43 mg.

## HOW TO PREPARE BABYCAT MILK?

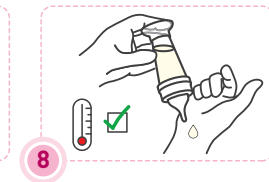
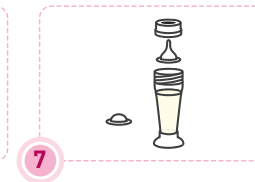
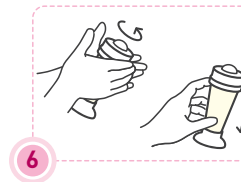
### THOROUGH CLEANING



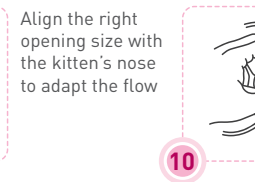
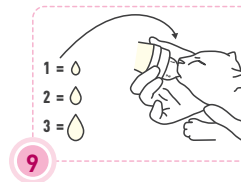
### MILK PREPARATION



### FEEDING OF THE MILK



### CARE



ONCE TEETH APPEAR,  
USE A BOWL



Gently stimulate the perineum with a soft, moist and lukewarm cloth (as an imitation of the mother's behaviour), to encourage the kitten's urination and defecation



# MOTHER & BABYCAT



2  
STAGE



Available in  
400g and 2kg bags

## FEEDING GUIDELINES

KITTEN'S WEIGHT	KIBBLE ONLY			
	KITTEN		GESTATING QUEEN	
	age in months	grams per day	GESTATION IN WEEKS	grams per day
0.4kg	1	26	3	50
1kg	2	45	9	78
1.3kg	3	56		95
2kg	4	61	8kg	101
			8kg	156

OR

## MIX: KIBBLE + WET\*



Can 195g  
MOTHER & BABYCAT  
Ultra soft mousse\*

Lactating queen ► **AD LIBITUM**

Always keep fresh drinking water available

Metabolisable energy:  
= 240ml = 110g  
4437Kcal/Kg

\*Subject to product availability

## START OF LIFE

### RECOMMENDED FOR

- Gestating / lactating queens and 1 to 4 month old kittens



### MOTHER & BABYCAT'S HEALTH SUPPORT

MOTHER & BABYCAT is a unique nutritional solution which is adapted to the queen's high energy needs at the end of gestation and during lactation for optimal development of kittens during the first growth stage.



### IMMUNE SYSTEM SUPPORT

Supports the development of the kitten's healthy immune system with the inclusion of a scientifically proven complex, including vitamins E and C.



### BRAIN DEVELOPMENT

Enriched with an omega-3 fatty acid (DHA) to support the kitten's brain development and healthy vision.

### ANALYTICAL CONSTITUENTS

Moisture	5.5%
Protein	34%
Fat content	25%
Crude fibre	1.7%
Crude ash	7.3%
NFE	26.5%

### AMINO ACIDS (TOTAL)

Taurine (%)	0.28
-------------	------

### MINERALS (TOTAL)

Calcium (%)	1.25	Potassium (%)	0.8
Phosphorus (%)	1.03	Magnesium (%)	0.09
Sodium (%)	0.5	Copper (mg/kg)	17
Chloride (%)	0.9	Zinc (mg/kg)	170

### VITAMINS (TOTAL)

Vit. A (IU/kg)	28500	Vit. C (mg/kg)	220
Vit. D3 (IU/kg)	1000	Vit. E (mg/kg)	550

### OTHER GUARANTEES (TOTAL)

Dietary fibre (%)	6.2	EPA + DHA (%)	0.37
Omega 6 (%)	5.7	L-carnitine (mg/kg)	0
Omega 3 (%)	1.06	DHA (%)	0.19
Glucosamine + Chondroitin (mg/kg)			0

### CALCULATED METABOLISABLE ENERGY (TOTAL)

Energy_NRC 85 (kcal/kg)	4243
Energy_NRC 2006 (CF) (kcal/kg)	4437

### COMPOSITION

Dehydrated poultry protein, animal fats, maize flour, wheat gluten\*, rice, hydrolysed animal proteins, yeasts products, beet pulp, vegetable fibres, soya oil, minerals, fish oil, fructo-oligo-saccharides, hydrolysed yeast (source of manno-oligo-saccharides and beta-glucans) (0.30%), algal oil Schizochytrium sp. (source of DHA), marigold meal.

### ADDITIVES (KG)

Nutritional additives: Vitamin A: 25500IU, Vitamin D3: 1000IU, Iron [3b103]: 33mg, Iodine [3b201, 3b202]: 3.3mg, Copper [3b405, 3b406]: 10mg, Manganese [3b502, 3b504]: 43mg, Zinc [3b603, 3b605, 3b606]: 130mg, Selenium [3b801, 3b811, 3b812]: 0.04mg - Technological additives: Clinoptilolite of sedimentary origin: 5g - Preservatives - Antioxidants.

\*L.I.P.: protein selected for its very high digestibility.

# MOTHER & BABYCAT



2  
STAGE



Available in  
195g can

## FEEDING GUIDELINES

AGE IN WEEKS	ADULT WEIGHT					
	3kg	2/4	3/4	3/4	3/4	1
5-6						
6-7						
7-8						
8-12						
12-16						

1  
= 195g

## START OF LIFE

### RECOMMENDED FOR

- Gestating / lactating queens and 1 to 4 month old kittens



### IDEAL STARTER FOOD FOR KITTENS

Ultra soft mousse texture to facilitate the transition to solid food.



### IMMUNE SYSTEM SUPPORT

Supports the development of the kitten's healthy immune system with the inclusion of a scientifically proven complex, including vitamins E and C.



### BRAIN DEVELOPMENT

Enriched with an omega-3 fatty acid (DHA) to support the kitten's brain development and healthy vision.

### ANALYTICAL CONSTITUENTS

Moisture	78.7%
Protein	10.5%
Fat content	5.5%
Crude fibre	0.8%
Crude ash	1.7%
NFE	2.8%

### AMINO ACIDS (TOTAL)

Taurine (%)	0.12
-------------	------

### MINERALS (TOTAL)

Calcium (%)	0.29	Potassium (%)	0.19
Phosphorus (%)	0.23	Magnesium (%)	0.019
Sodium (%)	0.16	Copper (mg/kg)	5.5
Chloride (%)	0.2	Zinc (mg/kg)	26

### VITAMINS (TOTAL)

Vit. A (IU/kg)	30000	Vit. C (mg/kg)	50
Vit. D3 (IU/kg)	160	Vit. E (mg/kg)	120

### OTHER GUARANTEES (TOTAL)

Dietary fibre (%)	1.3	EPA + DHA (%)	0.12
Omega 6 (%)	1.65	L-carnitine (mg/kg)	0
Omega 3 (%)	0.22	DHA (%)	0.05
Glucosamine + Chondroitin (mg/kg)			0

### CALCULATED METABOLISABLE ENERGY (TOTAL)

Energy_NRC 85 (kcal/kg)	933
Energy_NRC 2006 (CF) (kcal/kg)	988

### COMPOSITION

Meat and animal derivatives, oils and fats, cereals, milk and milk derivatives, derivatives of vegetable origin, minerals, yeasts.

### ADDITIVES (KG)

Nutritional additives: Vitamin D3: 120IU, Iron [3b103]: 5mg, Iodine [3b202]: 0.4mg, Copper [3b405, 3b406]: 3.3mg, Manganese [3b502, 3b503, 3b504]: 1.5mg, Zinc [3b603, 3b605, 3b606]: 15mg.



# KITTEN



3  
STAGE

CONTAINS  
ANTIOXIDANTS

Available in  
400g, 2 and  
4kg bags

### FEEDING GUIDELINES

KITTEN'S WEIGHT	KIBBLE ONLY	
	age in months	grams per day
0.4kg - 1kg	1 - 2	29 - 48
1.3kg - 2kg	3 - 4	61 - 66
2.3kg - 2.9kg	5 - 6	69 - 67
3.1kg - 4kg	7 - 12	64 - 51

OR

MIX: KIBBLE + WET*	
	grams per day
	N/A
	N/A
	48 - 46
	43 - 30

	Always keep fresh drinking water available
	Metabolisable energy: 4083Kcal/Kg
= 240ml = 94g	

\*Subject to product availability

## START OF LIFE

### RECOMMENDED FOR

- Kittens from 4 to 12 months old



### IMMUNE SYSTEM SUPPORT

Supports the development of the kitten's healthy immune system with the inclusion of a scientifically proven complex, including vitamins E and C.



### BRAIN DEVELOPMENT

Enriched with an omega-3 fatty acid (DHA) to support the kitten's brain development and healthy vision.



### MICROBIOME SUPPORT

Combination of prebiotics (MOS) & highly digestible proteins to help promote a healthy balance of intestinal microbiota for digestive health.

### ANALYTICAL CONSTITUENTS

Moisture	5.5%
Protein	36%
Fat content	18%
Crude fibre	2.3%
Crude ash	7.8%
NFE	30.3%

### AMINO ACIDS (TOTAL)

Taurine (%)	0.25
-------------	------

### MINERALS (TOTAL)

Calcium (%)	1.24	Potassium (%)	0.8
Phosphorus (%)	1.1	Magnesium (%)	0.08
Sodium (%)	0.5	Copper (mg/kg)	15
Chloride (%)	0.87	Zinc (mg/kg)	170

### VITAMINS (TOTAL)

Vit. A (IU/kg)	24000	Vit. C (mg/kg)	200
Vit. D3 (IU/kg)	800	Vit. E (mg/kg)	500

### OTHER GUARANTEES (TOTAL)

Dietary fibre (%)	7.1	EPA + DHA (%)	0.3
Omega 6 (%)	4.17	L-carnitine (mg/kg)	0
Omega 3 (%)	0.77	DHA (%)	0.17
Glucosamine + Chondroitin (mg/kg)	0		

### CALCULATED METABOLISABLE ENERGY (TOTAL)

Energy_NRC 85 (kcal/kg)	3854
Energy_NRC 2006 (CF) (kcal/kg)	4083

### COMPOSITION

Dehydrated poultry protein, rice, wheat gluten\*, animal fats, maize flour, hydrolysed animal proteins, wheat flour, maize gluten, yeasts products, beet pulp, vegetable fibres, minerals, soya oil, fish oil, psyllium husks and seeds, fructo-oligo-saccharides, hydrolysed yeast (source of manno-oligo-saccharides and beta-glucans) (0.29%), algal oil Schizochytrium sp. (source of DHA), marigold meal.

### ADDITIVES (KG)

Nutritional additives: Vitamin A: 21000IU, Vitamin D3: 800IU, Iron (3b103): 32mg, Iodine (3b201, 3b202): 3.2mg, Copper (3b405, 3b406): 10mg, Manganese (3b502, 3b504): 42mg, Zinc (3b603, 3b605, 3b606): 126mg, Selenium (3b801, 3b811, 3b812): 0.05mg - Technological additives: Clinoptilolite of sedimentary origin: 10g - Preservatives - Antioxidants.

\*L.I.P.: protein selected for its very high digestibility.



# KITTEN



3  
STAGE



Available in box  
of 12 pouches  
of 85g

### FEEDING GUIDELINES

AGE IN MONTHS	POUCH ONLY		
	ADULT WEIGHT		
	3kg	4kg	5kg
4	2+1/2	3	3+1/2
6	2+1/2	3	3+1/2
8	2+1/2	3	3+1/2
10	2	2+1/2	3
12	2	2+1/2	3

OR

1x Pouch 85g KITTEN Chunks in gravy*	KIBBLE* AND POUCH		
	ADULT WEIGHT		
	3kg	4kg	5kg
	35g	45g	57g
	35g	46g	58g
	30g	40g	51g
	24g	34g	43g
	20g	30g	38g

\*ROYAL CANIN® KITTEN

Metabolisable energy: 952kcal/kg

## START OF LIFE

### RECOMMENDED FOR

- Kittens from 4 to 12 months old



### SOFT TEXTURE FOR BABY TEETH

Optimal chunk size, texture & taste for growing kittens.



### IMMUNE SYSTEM SUPPORT

Supports the development of the kitten's healthy immune system with the inclusion of a scientifically proven complex, including vitamins E and C.



### BRAIN DEVELOPMENT

Enriched with an omega-3 fatty acid (DHA) to support the kitten's brain development and healthy vision.

### ANALYTICAL CONSTITUENTS

Moisture	78.2%
Protein	12%
Fat content	4%
Crude fibre	0.7%
Crude ash	1.7%
NFE	34.4%

### AMINO ACIDS (TOTAL)

Taurine (%)	0.11
-------------	------

### MINERALS (TOTAL)

Calcium (%)	0.29	Potassium (%)	0.19
Phosphorus (%)	0.26	Magnesium (%)	0.02
Sodium (%)	0.15	Copper (mg/kg)	4.4
Chloride (%)	0.2	Zinc (mg/kg)	26.0

### VITAMINS (TOTAL)

Vit. A (IU/kg)	58900	Vit. C (mg/kg)	45
Vit. D3 (IU/kg)	260	Vit. E (mg/kg)	110

### OTHER GUARANTEES (TOTAL)

Dietary fibre (%)	1.1	EPA + DHA (%)	0.1
Omega 6 (%)	0.8	L-carnitine (mg/kg)	0
Omega 3 (%)	0.2	DHA (%)	0.05
Glucosamine + Chondroitin (mg/kg)	0		

### CALCULATED METABOLISABLE ENERGY (TOTAL)

Energy_NRC 85 (kcal/kg)	879
Energy_NRC 2006 (CF) (kcal/kg)	952

### COMPOSITION

Meat and animal derivatives, vegetable protein extracts, cereals, derivatives of vegetable origin, minerals, oils and fats, yeasts.

### ADDITIVES (KG)

Nutritional additives: Vitamin D3: 220IU, Iron (3b103): 4mg, Iodine (3b202): 0.4mg, Copper (3b405, 3b406): 3.1mg, Manganese (3b502, 3b503, 3b504): 1.1mg, Zinc (3b603, 3b605, 3b606): 11mg.





# KITTEN



Available in box of 12 pouches of 85g

## FEEDING GUIDELINES

AGE IN MONTHS	POUCH ONLY		
	ADULT WEIGHT		
	3kg	4kg	5kg
4	3	3 + 1/2	4
6	3	3+1/2	4
8	2+1/2	3	3+1/2
10	2	2+1/2	3
12	2	2+1/2	3

OR

KIBBLE* AND POUCH	ADULT WEIGHT		
	3kg	4kg	5kg
1x Pouch 85g KITTEN Chunks in jelly*	37g	46g	58g
	37g	47g	59g
	31g	41g	52g
	25g	35g	44g
	21g	31g	40g

\*ROYAL CANIN® KITTEN

Metabolisable energy: 916kcal/kg

## START OF LIFE

### RECOMMENDED FOR

- Kittens from 4 to 12 months old



### SOFT TEXTURE FOR BABY TEETH

Optimal chunk size, texture & taste for growing kittens.



### IMMUNE SYSTEM SUPPORT

Supports the development of the kitten's healthy immune system with the inclusion of a scientifically proven complex, including vitamins E and C.



### BRAIN DEVELOPMENT

Enriched with an omega-3 fatty acid (DHA) to support the kitten's brain development and healthy vision.

### ANALYTICAL CONSTITUENTS

Moisture	79.8%
Protein	12%
Fat content	4%
Crude fibre	0.4%
Crude ash	1.5%
NFE	2.2%

### AMINO ACIDS (TOTAL)

Taurine (%)	0.11
-------------	------

### MINERALS (TOTAL)

Calcium (%)	0.25	Potassium (%)	0.17
Phosphorus (%)	0.21	Magnesium (%)	0.02
Sodium (%)	0.15	Copper (mg/kg)	4.7
Chloride (%)	0.22	Zinc (mg/kg)	23

### VITAMINS (TOTAL)

Vit. A (IU/kg)	50500	Vit. C (mg/kg)	43
Vit. D3 (IU/kg)	100	Vit. E (mg/kg)	105

### OTHER GUARANTEES (TOTAL)

Dietary fibre (%)	1.05	EPA + DHA (%)	0.1
Omega 6 (%)	0.8	L-carnitine (mg/kg)	0
Omega 3 (%)	0.18	DHA (%)	0.04
Glucosamine + Chondroitin (mg/kg)	0		

### CALCULATED METABOLISABLE ENERGY (TOTAL)

Energy_NRC 85 (kcal/kg)	841
Energy_NRC 2006 (CF) (kcal/kg)	916

### COMPOSITION

Meat and animal derivatives, vegetable protein extracts, derivatives of vegetable origin, minerals, oils and fats, yeasts.

### ADDITIVES (KG)

Nutritional additives: Vitamin D3: 60IU, Iron (3b103): 4mg, Iodine (3b202): 0.38mg, Copper (3b405, 3b406): 3mg, Manganese (3b502, 3b503, 3b504): 1.1mg, Zinc (3b603, 3b605, 3b606): 11mg.



# KITTEN



Available in box of 12 pouches of 85g

## FEEDING GUIDELINES

AGE IN MONTHS	POUCH ONLY		
	ADULT WEIGHT		
	3kg	4kg	5kg
4	2+1/2	3	4
6	2+1/2	3	4
8	2+1/2	3	3+1/2
10	2	2+1/2	3
12	2	2+1/2	3

OR

KIBBLE* AND POUCH	ADULT WEIGHT		
	3kg	4kg	5kg
1x Pouch 85g KITTEN Loaf in sauce*	36g	46g	58g
	36g	46g	59g
	30g	41g	51g
	24g	34g	44g
	21g	30g	39g

\*ROYAL CANIN® KITTEN

Metabolisable energy: 937kcal/kg

## START OF LIFE

### RECOMMENDED FOR

- Kittens from 4 to 12 months old



### SOFT TEXTURE FOR BABY TEETH

Optimal texture & taste for growing kittens.



### IMMUNE SYSTEM SUPPORT

Supports the development of the kitten's healthy immune system with the inclusion of a scientifically proven complex, including vitamins E and C.



### BRAIN DEVELOPMENT

Enriched with an omega-3 fatty acid (DHA) to support the kitten's brain development and healthy vision.

### ANALYTICAL CONSTITUENTS

Moisture	78.4%
Protein	12%
Fat content	4%
Crude fibre	0.8%
Crude ash	1.8%
NFE	3%

### AMINO ACIDS (TOTAL)

Taurine (%)	0.11
-------------	------

### MINERALS (TOTAL)

Calcium (%)	0.29	Potassium (%)	0.21
Phosphorus (%)	0.21	Magnesium (%)	0.02
Sodium (%)	0.18	Copper (mg/kg)	5.8
Chloride (%)	0.24	Zinc (mg/kg)	23.5

### VITAMINS (TOTAL)

Vit. A (IU/kg)	18600	Vit. C (mg/kg)	45
Vit. D3 (IU/kg)	150	Vit. E (mg/kg)	110

### OTHER GUARANTEES (TOTAL)

Dietary fibre (%)	1.4	EPA + DHA (%)	0.1
Omega 6 (%)	0.76	L-carnitine (mg/kg)	0
Omega 3 (%)	0.18	DHA (%)	0.03
Glucosamine + Chondroitin (mg/kg)	0		

### CALCULATED METABOLISABLE ENERGY (TOTAL)

Energy_NRC 85 (kcal/kg)	865
Energy_NRC 2006 (CF) (kcal/kg)	937

### COMPOSITION

Meat and animal derivatives, vegetable protein extracts, derivatives of vegetable origin, cereals, minerals, vegetables, oils and fats, yeasts.

### ADDITIVES (KG)

Nutritional additives: Vitamin D3: 120IU, Iron (3b103): 3mg, Iodine (3b202): 0.42mg, Copper (3b405, 3b406): 3.3mg, Manganese (3b502, 3b503, 3b504): 0.8mg, Zinc (3b603, 3b605, 3b606): 8mg.



# START OF life PRODUCT GUIDE

SMALL DOG / MINI DOG

EXPECTED ADULT WEIGHT UP TO 10 kg



**PUPPY PROTECH / BABYDOG MILK**

Newborn to 6 weeks

NEWBORN



**MINI STARTER**  
DRY + WET CANS

1 to 2 months

1 MONTH



**MINI PUPPY**  
DRY + WET POUCHES

2 to 10 months

2 MONTHS



**NEUTERED ADULT SMALL DOG**  
DRY + WET POUCHES

Neutering to 8 years

6 MONTHS

OR



**DENTAL SMALL DOG**  
DRY

12 months to 5 years

12 MONTHS

OR



**ADULT SMALL DOG**  
DRY + WET POUCHES

10 months to 8 years – for entire dogs

8 YEARS



**MATURE CONSULT SMALL DOG**  
DRY + WET POUCHES

8 years +

8 YEARS

ONWARDS

MEDIUM DOG

EXPECTED ADULT WEIGHT 11 - 25 kg



**PUPPY PROTECH / BABYDOG MILK**

Newborn to 6 weeks

NEWBORN



**MEDIUM STARTER**  
DRY + WET CANS

1 to 2 months

1 MONTH



**MEDIUM PUPPY**  
DRY + WET POUCHES

2 to 12 months

2 MONTHS



**NEUTERED JUNIOR**  
DRY

Neutering to 12/15 months – only if neutered, if entire stay on Puppy until 12 months

6 MONTHS

OR



**NEUTERED ADULT MEDIUM DOG**  
DRY + WET POUCHES

12 months to 7 years

12 MONTHS

OR



**DENTAL M/L DOG**  
DRY

12 months to 7 years

12 MONTHS



**ADULT MEDIUM DOG**  
DRY + WET POUCHES

12 months to 7 years – for entire dogs

7 YEARS +



**MATURE CONSULT MEDIUM DOG**  
DRY + WET POUCHES

7 years +

7 YEARS

ONWARDS

LARGE DOG / MAXI DOG

EXPECTED ADULT WEIGHT 26 - 44 kg



**PUPPY PROTECH / BABYDOG MILK**

Newborn to 6 weeks

NEWBORN



**MAXI STARTER**  
DRY + WET CANS

1 to 2 months

1 MONTH



**MAXI PUPPY**  
DRY + WET POUCHES

2 to 12 months

2 MONTHS



**NEUTERED JUNIOR LARGE DOG**  
DRY

Neutering to 12/15 months – only if neutered, if entire stay on Puppy until 12 months

6 MONTHS

OR



**NEUTERED ADULT LARGE DOG**  
DRY + WET POUCHES

12/15 months to 5 years

12-15 MONTHS

OR



**DENTAL M/L DOG**  
DRY

12/15 months to 5 years

12/15 MONTHS



**ADULT LARGE DOG**  
DRY + WET POUCHES

12/15 months to 5 years – for entire dogs

5 YEARS



**MATURE CONSULT LARGE DOG**  
DRY + WET POUCHES

5 years +

5 YEARS

ONWARDS

GIANT DOG

EXPECTED ADULT WEIGHT OVER 45 kg



**PUPPY PROTECH / BABYDOG MILK**

Newborn to 6 weeks

NEWBORN



**GIANT PUPPY**  
DRY

2 to 8 months

2 MONTHS



**GIANT JUNIOR**  
DRY

8 to 18/24 months

8 MONTHS

18-24 MONTHS

KITTEN



**BABYCAT MILK**

Newborn to weaning

NEWBORN



**MOTHER & BABYCAT**  
DRY + WET CANS

1 to 4 months

1 MONTH



**KITTEN**  
DRY + WET POUCHES

4 to 12 months

4 MONTHS



**NEUTERED SATIETY BALANCE**  
DRY + WET POUCHES

6 months to 7 years

6 MONTHS

OR



**DENTAL**  
DRY

12 months to 7 years

12 MONTHS



**MATURE CONSULT BALANCE**  
DRY + WET POUCHES

From 7 years onwards, BCS >5

7 YEARS



**MATURE CONSULT**  
DRY + WET POUCHES

From 7 years onwards, BCS <5

ONWARDS





# PUPPY PROTECH

Neonatal milk for puppies



1  
STAGE

EXCLUSIVE FORMULA  
SCIENTIFICALLY  
PROVEN®

COLOSTRUM  
FIRST FEEDING + 24h  
MILK/LAIT  
250g/8.8oz

Available in  
**300g BOX (6 x 50g Sachets)**  
or **1.2kg BOX (12 x 100g Sachets)**

## ANALYTICAL CONSTITUENTS

Protein	31%
Fat content	35%
Crude ash	4.8%
NFE	26.7%

## AMINO ACIDS (TOTAL)

Taurine (%)	0.15
-------------	------

## MINERALS (TOTAL)

Calcium (%)	1	Potassium (%)	0.6
Phosphorus (%)	0.75	Magnesium (%)	0.08
Sodium (%)	0.2	Copper (mg/kg)	12
Chloride (%)	0.4	Zinc (mg/kg)	160

## VITAMINS (TOTAL)

Vit. A (IU/kg)	24300	Vit. E (IU/kg)	729
Vit. D3 (IU/kg)	1215	Vit. C (mg/kg)	243

## OTHER GUARANTEES (TOTAL)

Dietary fibre (%)	0.405	EPA + DHA (%)	0.12
Omega 6 (%)	2.7	L-carnitine (mg/kg)	0
Omega 3 (%)	0.4	Glucosamine + Chondroitin (mg/kg)	0
DHA (%)	0.04	Starch (%)	0
Lactose	15.4		

## CALCULATED METABOLISABLE ENERGY (TOTAL)

Energy_NRC 85 (kcal/kg)	5005
Energy_NRC 2006 (CF) (kcal/kg)	5299

## FEEDING GUIDELINES

AGE	Number of meals day	WEIGHT OF ADULT DOG			
		0 - 10 kg	11 - 25 kg	26-45 kg	> 45 kg
Week 1	8	3 - 10ml	5 - 20ml	10 - 25ml	15 - 35ml
Week 2	5	10 - 30ml	15 - 50ml	30 - 70ml	40 - 80ml
Week 3	4	20 - 50ml	35 - 90ml	60 - 120ml	85 - 125ml
Week 4	4	25 - 60ml	45 - 125ml	90 - 170ml	120 - 190ml
>5 Weeks	When the puppy is 5 weeks or older, serve the milk on a plate.				

\* to support healthy early growth

## START OF LIFE

### RECOMMENDED FOR

- Orphaned puppies
- Insufficient colostrum and/or milk from the bitch
- Agalactia
- Mastitis
- From birth to weaning

### NURSING KIT INCLUDED



### Nursing Kit:

- 1 dedicated feeding bottle
- 3 variable-flow teats adapted to different puppy sizes
- 1 clamping ring
- 1 measuring spoon
- 1 user guide



### SUPPORT IMMUNE FUNCTION

Supports the development of the neonatal puppy with the inclusion of specific nutrients to support immune function just after birth.



### BRAIN DEVELOPMENT WITH DHA

Enriched with DHA an omega-3 fatty acid that is scientifically proven to support the puppy's brain development.



### MICROBIOME SUPPORT

Combination of prebiotics and highly digestible proteins to help promote a healthy balance of intestinal microbiota for digestive health. This formula is particularly suitable for the puppy's immature digestive system to promote growth and healthy digestion with adapted content of lactose and without starch.



### EASY TO RECONSTITUTE

This exclusive PUPPY PRO TECH formula dissolves instantly, creating a totally homogeneous milk replacer (see user guide).

## COMPOSITION

Composition: Milk retentate, milk fat, refined palm oil (from sustainable sources), maltodextrin, dried egg products (source of specific globulins), whey protein, refined soya oil, refined copra oil, minerals, fructo-oligosaccharides (0.51%), fish oil (source of DHA), fungi oil.

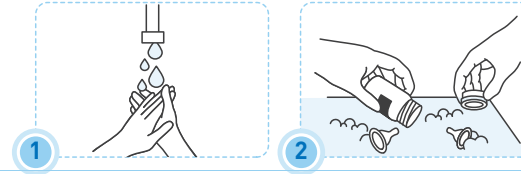
### ADDITIVES (KG)

Nutritional additives: Vitamin A: 20250 IU, Vitamin D3: 3.5 mg, Copper (3b405, 3b406): 12 mg, Manganese (3b502, 3b504): 65 mg, Zinc (3b603, 3b605, 3b606): 160 mg, Selenium (3b801, 3b811, 3b812): 0.45 mg.

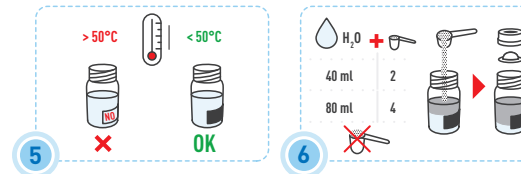
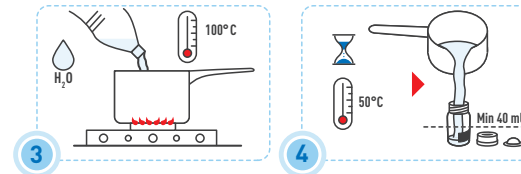


## HOW TO PREPARE PUPPY PRO TECH?

### THOROUGH CLEANING

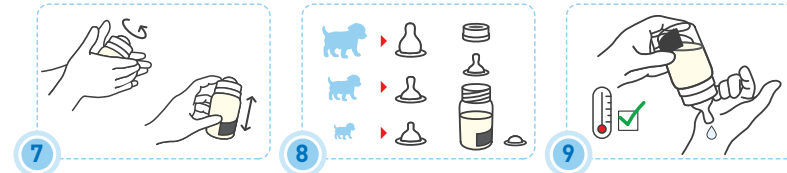


### MILK PREPARATION

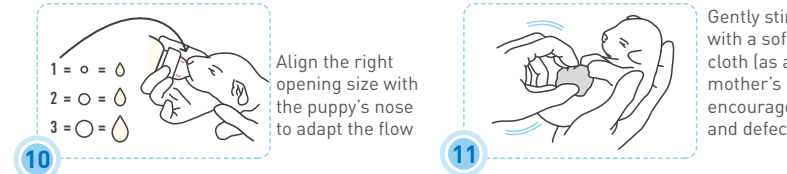


Add the milk powder when the water temperature is lower than 50°C to preserve the product's properties

### FEEDING OF THE MILK



### CARE



Gently stimulate the perineum with a soft, moist and lukewarm cloth (as an imitation of the mother's behaviour), to encourage the puppy's urination and defecation

### ONCE TEETH APPEAR, USE A BOWL







# BABYDOG MILK

0-2 months - From birth to weaning  
Milk replacer for puppies - Formulated with key nutrients found in mother's milk

**1**  
STAGE



Available in  
**400g pack:**  
4 x 100g sachets  
**2kg pack:**  
5 x 400g sachets

## NURSING KIT INCLUDED



### ANALYTICAL CONSTITUENTS

Moisture	2.5%
Protein	33%
Fat content	39%
Crude ash	5%
NFE	19.5%

### AMINO ACIDS (TOTAL)

Taurine (%)	0.19
-------------	------

### MINERALS (TOTAL)

Calcium (%)	1.2	Potassium (%)	0.7
Phosphorus (%)	0.8	Magnesium (%)	0.1
Sodium (%)	0.2	Copper (mg/kg)	15
Chloride (%)	0.5	Zinc (mg/kg)	180

### VITAMINS (TOTAL)

Vit. A (IU/kg)	30000
Vit. D3 (IU/kg)	1500
Vit. E (mg/kg)	900
Vit. C (mg/kg)	300

### OTHER GUARANTEES (TOTAL)

Dietary fibre (%)	0.5	EPA + DHA (%)	0.15
Omega 6 (%)	3.4	L-carnitine (mg/kg)	0
Omega 3 (%)	0.5	Glucosamine + Chondroitin (mg/kg)	0
DHA (%)	0.05	Starch (%)	0
Lactose (%)	19		

### CALCULATED METABOLISABLE ENERGY (TOTAL)

Energy_NRC 85 (kcal/kg)	5188
Energy_NRC 2006 (CF) (kcal/kg)	5482

## START OF LIFE

### RECOMMENDED FOR

- From birth to weaning - 1st age milk



### BRAIN DEVELOPMENT WITH DHA

Enriched with DHA an omega-3 fatty acid that is scientifically proven to support the puppy's brain development.



### IMMUNE SYSTEM HEALTH

Supports the development of the puppy's healthy immune system.



### MICROBIOME SUPPORT

Combination of prebiotics and highly digestible proteins to help promote a healthy balance of intestinal microbiota for digestive health. This formula is particularly suitable for the puppy's immature digestive system to support growth and healthy digestion with adapted content of lactose and without starch.



### EASY TO RECONSTITUTE

The BABYDOG MILK formula dissolves instantly, creating a totally homogeneous milk replacer (see user guide).

### MINI (1-10KG)

AGE	Number of meals day	ml of reconstituted milk/puppy/meal		Milk powder (in measuring spoon)	
		Min	Max	Min	Max
Week 1	8	3	10	2/10	5/10
Week 2	5	10	30	5/10	1 + 5/10
Week 3	4	20	50	1	2 + 5/10
Week 4	4	25	60	1 + 3/10	3

### MEDIUM (11-25KG)

Week 1	8	5	20	3/10	1
Week 2	5	15	50	8/10	2 + 5/10
Week 3	4	35	90	1 + 8/10	4 + 5/10
Week 4	4	45	125	2 + 3/10	6 + 3/10

### MAXI (26-44KG)

Week 1	8	10	25	5/10	1 + 3/10
Week 2	5	30	70	1 + 5/10	3 + 5/10
Week 3	4	60	120	3	6
Week 4	4	90	170	4 + 5/10	8 + 5/10

### GIANT (+45KG)

Week 1	8	15	35	8/10	1 + 8/10
Week 2	5	40	80	2	4
Week 3	4	85	125	4 + 3/10	6 + 3/10
Week 4	4	120	190	6	9 + 5/10

### COMPOSITION

Milk retentate, milk fat, refined palm oil (from sustainable sources), whey protein, refined soya oil, refined copra oil, minerals, fructo-oligosaccharides (0.51%), fish oil (source of DHA), fungi oil.

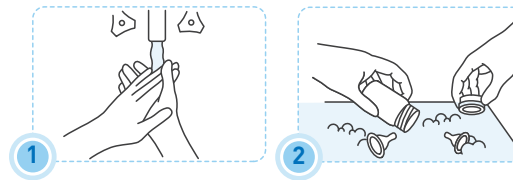
### ADDITIVES (KG)

Nutritional additives: Vitamin A: 25000 IU, Vitamin D3: 1500 IU, Iron [3b103]: 100 mg, Iodine [3b201, 3b202]: 4 mg, Copper [3b405, 3b406]: 15 mg, Manganese [3b502, 3b504]: 80 mg, Zinc [3b603, 3b605, 3b606]: 180 mg, Selenium [3b801, 3b811, 3b812]: 0.43 mg.

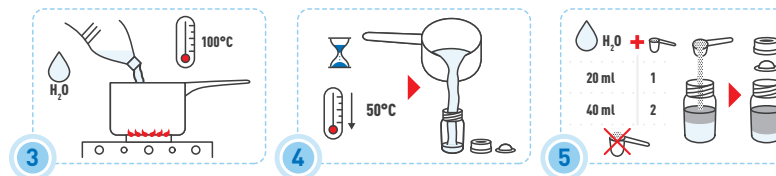


## HOW TO PREPARE BABYDOG MILK?

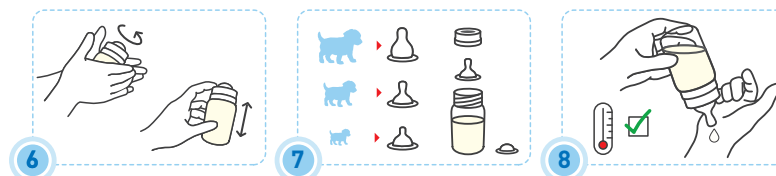
### THOROUGH CLEANING



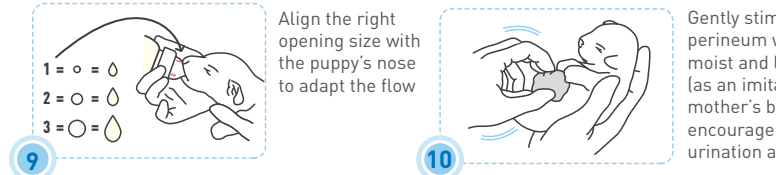
### MILK PREPARATION



### FEEDING OF THE MILK



### CARE



### ONCE TEETH APPEAR, USE A BOWL



# STARTER

## MOTHER & BABYDOG

MINI

2  
STAGEAvailable in  
4kg

## FEEDING GUIDELINES

ADULT TARGET WEIGHT	WEANING PUPPY					
	KIBBLE ONLY OR			MIX KIBBLE + WET		
	AGE IN WEEKS		6-8	AGE IN WEEKS		6-8
1kg	0-3	3-6	grams per day	0	grams per day	20
3kg	0-3	3-6	grams per day	0	grams per day	20
5kg	0-3	3-6	grams per day	8	grams per day	62
7kg	0-3	3-6	grams per day	18	grams per day	107
10kg	0-3	3-6	grams per day	18	grams per day	107

1/2 Can 195g STARTER MOTHER & BABYDOG Ultra soft mousse\*

## GESTATING MOTHER

MOTHER WEIGHT	GESTATING MOTHER					
	KIBBLE ONLY OR			MIX KIBBLE + WET		
	GESTATION IN WEEKS		8	GESTATION IN WEEKS		8
1kg	6	grams per day	29	4	grams per day	9
3kg	6	grams per day	66	41	grams per day	53
5kg	6	grams per day	96	72	grams per day	89
7kg	6	grams per day	124	99	grams per day	121
10kg	6	grams per day	162	137	grams per day	167

1/2 Can 195g STARTER MOTHER & BABYDOG Ultra soft mousse\*

\*Subject to product availability

Lactating mother **AD LIBITUM**

Always keep fresh drinking water available	Metabolisable energy: = 240ml = 98g 4209Kcal/Kg
--	---

## START OF LIFE

## RECOMMENDED FOR

- Adult small breed bitches at the end of gestation and during lactation (adult weight up to 10kg)
- Weaning small breed puppies up to 2 months old (adult weight up to 10kg)



## MOTHER &amp; BABYDOG'S HEALTH SUPPORT

MINI STARTER is a unique nutritional solution which is adapted to the mother's high energy needs at the end of gestation and during lactation for nursing puppies' optimal growth.



## IMMUNE SYSTEM SUPPORT

Supports the development of the puppy's healthy immune system with the inclusion of a scientifically proven complex, including vitamins E and C.



## MICROBIOME SUPPORT

Combination of prebiotics (MOS) & highly digestible proteins to help promote a healthy balance of intestinal microbiota for digestive health.

## ANALYTICAL CONSTITUENTS

Moisture	8%
Protein	30%
Fat content	22%
Crude fibre	1.3%
Crude ash	8.5%
NFE	30.2%

## AMINO ACIDS (TOTAL)

Taurine (%)	0.5
-------------	-----

## MINERALS (TOTAL)

Calcium (%)	1.45	Potassium (%)	0.8
Phosphorus (%)	1.1	Magnesium (%)	0.08
Sodium (%)	0.4	Copper (mg/kg)	15
Chloride (%)	1.06	Zinc (mg/kg)	170

## VITAMINS (TOTAL)

Vit. A (IU/kg)	20000	Vit. C (mg/kg)	400
Vit. D3 (IU/kg)	1200	Vit. E (mg/kg)	500

## OTHER GUARANTEES (TOTAL)

Dietary fibre (%)	6.4	EPA + DHA (%)	0.39
Omega 6 (%)	4.49	L-carnitine (mg/kg)	0
Omega 3 (%)	0.91	DHA (%)	0.2
Glucosamine + Chondroitin (mg/kg)			0

## CALCULATED METABOLISABLE ENERGY (TOTAL)

Energy_NRC 85 (kcal/kg)	3977
Energy_NRC 2006 (CF) (kcal/kg)	4209

## COMPOSITION

Dehydrated poultry protein, rice, animal fats, wheat gluten\*, maize, beet pulp, hydrolysed animal proteins, minerals, soya oil, fish oil, fructo-oligo-saccharides, hydrolysed yeast (source of manno-oligo-saccharides and beta-glucans) [0.30%], algal oil Schizochytrium sp. (source of DHA), butyric acid salt, marigold meal.

## ADDITIVES (KG)

Nutritional additives: Vitamin A: 18500IU, Vitamin D3: 1200IU, Iron [3b103]: 40mg, Iodine [3b201, 3b202]: 4mg, Copper [3b405, 3b406]: 12mg, Manganese [3b502, 3b504]: 52mg, Zinc [3b603, 3b605, 3b606]: 131mg, Selenium [3b801, 3b811, 3b812]: 0.07 mg - Technological additives: Clinoptilolite of sedimentary origin: 10g - Preservatives - Antioxidants.

\*L.I.P.: protein selected for its very high digestibility.



# STARTER

## MOTHER & BABYDOG

2  
STAGEAvailable in  
195g cans

## FEEDING GUIDELINES

1 = 195g	AGE IN WEEKS	3-4	4-5	5-6	6-7	7-8	
	ADULT WEIGHT	4-5kg	1/4	2/4	1+1/4	1+2/4	2

## START OF LIFE

## RECOMMENDED FOR

- Adult bitches at the end of gestation and during lactation
- Weaning puppies up to 2 months old (all sizes)



## PERFECT TASTE &amp; TEXTURE FOR BABYDOGS

Ultra soft mousse texture to facilitate the transition to solid food.



## IMMUNE SYSTEM SUPPORT

Supports the development of the puppy's healthy immune system with the inclusion of a scientifically proven complex, including vitamins E and C.



## MICROBIOME SUPPORT

Combination of prebiotics (MOS) & highly digestible proteins to help promote a healthy balance of intestinal microbiota for digestive health.

## ANALYTICAL CONSTITUENTS

Moisture	78.5%
Protein	10%
Fat content	6%
Crude fibre	0.7%
Crude ash	2%
NFE	2.8%

## AMINO ACIDS (TOTAL)

Taurine (%)	0.12
-------------	------

## MINERALS (TOTAL)

Calcium (%)	0.34	Potassium (%)	0.16
Phosphorus (%)	0.26	Magnesium (%)	0.022
Sodium (%)	0.17	Copper (mg/kg)	4.3
Chloride (%)	0.14	Zinc (mg/kg)	27

## VITAMINS (TOTAL)

Vit. A (IU/kg)	6700	Vit. C (mg/kg)	100
Vit. D3 (IU/kg)	180	Vit. E (mg/kg)	175

## OTHER GUARANTEES (TOTAL)

Dietary fibre (%)	1.3	EPA + DHA (%)	0.13
Omega 6 (%)	1.18	L-carnitine (mg/kg)	0
Omega 3 (%)	0.26	DHA (%)	0.05
Glucosamine + Chondroitin (mg/kg)			0

## CALCULATED METABOLISABLE ENERGY (TOTAL)

Energy_NRC 85 (kcal/kg)	958
Energy_NRC 2006 (CF) (kcal/kg)	1002

## COMPOSITION

Meat and animal derivatives, cereals, derivatives of vegetable origin, minerals, oils and fats, milk and milk derivatives, yeasts.

## ADDITIVES (KG)

Nutritional additives: Vitamin D3: 170IU, Iron [3b103]: 6mg, Iodine [3b202]: 0.3mg, Copper [3b405, 3b406]: 2.5mg, Manganese [3b502, 3b503, 3b504]: 1.7mg, Zinc [3b603, 3b605, 3b606]: 17mg - Technological additives: Clinoptilolite of sedimentary origin: 2g.



# PUPPY

## MINI

3 STAGE



Available in  
800g, 2kg  
and 4kg

### FEEDING GUIDELINES

AGE IN MONTHS	KIBBLE ONLY			
	2kg	5kg	7kg	10kg
	grams per day	grams per day	grams per day	grams per day
2	49	93	113	146
4	56	110	141	183
6	48	100	141	185
10	39	78	100	133
11	MINI ADULT*			131

### OR

AGE IN MONTHS	MIX: KIBBLE + WET			
	2kg	5kg	7kg	10kg
	grams per day	grams per day	grams per day	grams per day
2	28	72	92	126
4	35	89	120	162
6	27	79	120	164
10	18	57	80	112
11	MINI ADULT*			110

\*Subject to product availability

2 > 5 months	6 > 10 months
	Metabolisable energy: 4072Kcal/Kg
Always keep fresh drinking water available	= 240ml = 91g

## START OF LIFE

### RECOMMENDED FOR

- Small breed puppies (adult weight up to 10kg) from 2 to 10 months old



### IMMUNE SYSTEM SUPPORT

Supports the development of the puppy's healthy immune system with the inclusion of a scientifically proven complex, including vitamins E and C.



### BRAIN DEVELOPMENT

Enriched with an omega-3 fatty acid (DHA) which is scientifically proven to support the puppy's brain development and support early learning.



### MICROBIOME SUPPORT

Combination of prebiotics (MOS) & highly digestible proteins to help promote a healthy balance of intestinal microbiota for digestive health.

### ANALYTICAL CONSTITUENTS

Moisture	9.5%
Protein	31%
Fat content	20%
Crude fibre	1.4%
Crude ash	8%
NFE	30.1%

### AMINO ACIDS (TOTAL)

Taurine (%)	0.48
-------------	------

### MINERALS (TOTAL)

Calcium (%)	1.34	Potassium (%)	0.65
Phosphorus (%)	1.02	Magnesium (%)	0.07
Sodium (%)	0.4	Copper (mg/kg)	15
Chloride (%)	0.76	Zinc (mg/kg)	170

### VITAMINS (TOTAL)

Vit. A (IU/kg)	23000	Vit. C (mg/kg)	400
Vit. D3 (IU/kg)	1000	Vit. E (mg/kg)	500

### OTHER GUARANTEES (TOTAL)

Dietary fibre (%)	6.5	EPA + DHA (%)	0.32
Omega 6 (%)	4.05	L-carnitine (mg/kg)	0
Omega 3 (%)	0.78	DHA (%)	0.17
Glucosamine + Chondroitin (mg/kg)	0		

### CALCULATED METABOLISABLE ENERGY (TOTAL)

Energy_NRC 85 (kcal/kg)	3839
Energy_NRC 2006 (CF) (kcal/kg)	4072

### COMPOSITION

Dehydrated poultry protein, rice, animal fats, wheat gluten\*, maize, beet pulp, maize flour, hydrolysed animal proteins, maize gluten, minerals, soya oil, fish oil, fructo-oligo-saccharides, hydrolysed yeast (source of manno-oligo-saccharides and beta-glucans) (0.30%), algal oil Schizochytrium sp. (source of DHA), Yucca Schidigera juice, marigold meal.

### ADDITIVES (KG)

Nutritional additives: Vitamin A: 21500IU, Vitamin D3: 1000IU, Iron [3b103]: 38mg, Iodine [3b201, 3b202]: 3.8mg, Copper [3b405, 3b406]: 12mg, Manganese [3b502, 3b504]: 50mg, Zinc [3b603, 3b605, 3b606]: 128mg, Selenium [3b801, 3b811, 3b812]: 0.06mg - Technological additives: Clinoptilolite of sedimentary origin: 10g - Preservatives - antioxidants.

\*L.I.P.: protein selected for its very high digestibility.



# PUPPY

## MINI

3 STAGE



Available in  
box of 12 pouches  
of 85g

### FEEDING GUIDELINES

AGE IN MONTHS	POUCH ONLY		
	2kg	5kg	10kg
2	2+1/2	4+1/2	7
4	2+1/2	5+1/2	9
6	2+1/2	5	9
8	2	4	7+1/2
10	2	4	6+1/2

### OR

AGE IN MONTHS	KIBBLE* AND POUCH		
	2kg	5kg	10kg
2	28g	72g	126g
4	35g	89g	162g
6	27g	79g	164g
8	19g	59g	129g
10	18g	57g	112g

\*ROYAL CANIN® PUPPY MINI

Metabolisable energy: 946kcal/kg

## START OF LIFE

### RECOMMENDED FOR

- Small breed puppies (adult weight up to 10kg) from 2 to 10 months old



### SOFT TEXTURE FOR BABY TEETH

Perfect chunk size, texture & taste for growing small breed puppies.



### IMMUNE SYSTEM SUPPORT

Supports the development of the puppy's healthy immune system with the inclusion of a scientifically proven complex, including vitamins E and C.



### BRAIN DEVELOPMENT

Enriched with an omega-3 fatty acid (DHA) which is scientifically proven to support the puppy's brain development and support early learning.

### ANALYTICAL CONSTITUENTS

Moisture	79.2%
Protein	8%
Fat content	6%
Crude fibre	1%
Crude ash	1.9%
NFE	3.9%

### AMINO ACIDS (TOTAL)

Taurine (%)	0.12
-------------	------

### MINERALS (TOTAL)

Calcium (%)	0.33	Potassium (%)	0.15
Phosphorus (%)	0.25	Magnesium (%)	0.015
Sodium (%)	0.16	Copper (mg/kg)	3.8
Chloride (%)	0.19	Zinc (mg/kg)	25

### VITAMINS (TOTAL)

Vit. A (IU/kg)	11700	Vit. C (mg/kg)	100
Vit. D3 (IU/kg)	130	Vit. E (mg/kg)	150

### OTHER GUARANTEES (TOTAL)

Dietary fibre (%)	1.8	EPA + DHA (%)	0.1
Omega 6 (%)	2	L-carnitine (mg/kg)	0
Omega 3 (%)	0.2	DHA (%)	0.05
Glucosamine + Chondroitin (mg/kg)	0		

### CALCULATED METABOLISABLE ENERGY (TOTAL)

Energy_NRC 85 (kcal/kg)	927
Energy_NRC 2006 (CF) (kcal/kg)	946

### COMPOSITION

Meat and animal derivatives, oils and fats, cereals, derivatives of vegetable origin, minerals, yeasts.

### ADDITIVES (KG)

Nutritional additives: Vitamin D3: 140IU, Iron [3b103]: 5mg, Iodine [3b202]: 0.3mg, Copper [3b405, 3b406]: 2.4mg, Manganese [3b502, 3b503, 3b504]: 1.5mg, Zinc [3b603, 3b605, 3b606]: 15mg - Technological additives: Clinoptilolite of sedimentary origin: 2g.



# STARTER

## MOTHER & BABYDOG

MEDIUM

2 STAGE



Available in  
15kg

### FEEDING GUIDELINES

ADULT TARGET WEIGHT	WEANING PUPPY				
	KIBBLE ONLY		OR MIX KIBBLE + WET		
	AGE IN WEEKS		AGE IN WEEKS		
11kg	0-3	3-6	6-8	0	85
	grams per day	grams per day	grams per day		
14kg	43	133	24	83	161
	grams per day	grams per day	grams per day	grams per day	
10kg	120	210	341	161	204
	grams per day	grams per day	grams per day	grams per day	
25kg	138	253	98	204	
	grams per day	grams per day	grams per day	grams per day	

1x Can 195g STARTER MOTHER & BABYDOG Ultra soft mousse\*

### GESTATING MOTHER

MOTHER WEIGHT	GESTATING MOTHER			
	KIBBLE ONLY		OR MIX KIBBLE + WET	
	GESTATION IN WEEKS		GESTATION IN WEEKS	
11kg	6	8	6	8
	grams per day	grams per day	grams per day	grams per day
14kg	173	205	138	168
	grams per day	grams per day	grams per day	grams per day
20kg	208	245	159	196
	grams per day	grams per day	grams per day	grams per day
25kg	271	321	222	272
	grams per day	grams per day	grams per day	grams per day

1x Can 195g STARTER MOTHER & BABYDOG Ultra soft mousse\*

\*Subject to product availability

Lactating mother **AD LIBITUM**

	Always keep fresh drinking water available		Metabolisable energy: 4216Kcal/Kg
	= 240ml = 94g		

## START OF LIFE

### RECOMMENDED FOR

- Adult medium breed bitches at the end of gestation and during lactation (adult weight 11 to 25kg)
- Weaning medium breed puppies up to 2 months old (adult weight 11 to 25kg)



### MOTHER & BABYDOG'S HEALTH SUPPORT

MEDIUM STARTER is a unique nutritional solution which is adapted to the mother's high energy needs at the end of gestation and during lactation for nursing puppies' optimal growth.



### IMMUNE SYSTEM SUPPORT

Supports the development of the puppy's healthy immune system with the inclusion of a scientifically proven complex, including vitamins E and C.



### MICROBIOME SUPPORT

Combination of prebiotics (MOS) & highly digestible proteins to help promote a healthy balance of intestinal microbiota for digestive health.

### ANALYTICAL CONSTITUENTS

Moisture	8%
Protein	30%
Fat content	22%
Crude fibre	1.3%
Crude ash	8.3%
NFE	30.4%

### AMINO ACIDS (TOTAL)

Taurine (%)	0.5
-------------	-----

### MINERALS (TOTAL)

Calcium (%)	1.44	Potassium (%)	0.8
Phosphorus (%)	1.1	Magnesium (%)	0.08
Sodium (%)	0.4	Copper (mg/kg)	17
Chloride (%)	1.04	Zinc (mg/kg)	170

### VITAMINS (TOTAL)

Vit. A (IU/kg)	20000	Vit. C (mg/kg)	400
Vit. D3 (IU/kg)	1200	Vit. E (mg/kg)	500

### OTHER GUARANTEES (TOTAL)

Dietary fibre (%)	6.5	EPA + DHA (%)	0.39
Omega 6 (%)	4.47	L-carnitine (mg/kg)	0
Omega 3 (%)	0.9	DHA (%)	0.2
Glucosamine + Chondroitin (mg/kg)			0

### CALCULATED METABOLISABLE ENERGY (TOTAL)

Energy_NRC 85 (kcal/kg)	3984
Energy_NRC 2006 (CF) (kcal/kg)	4216

### COMPOSITION

Dehydrated poultry protein, rice, animal fats, wheat gluten\*, maize, beet pulp, hydrolysed animal proteins, minerals, soya oil, fish oil, fructo-oligo-saccharides, hydrolysed yeast (source of manno-oligo-saccharides and beta-glucans) (0.30%), algal oil Schizochytrium sp. (source of DHA), butyric acid salt, marigold meal.

### ADDITIVES (KG)

Nutritional additives: Vitamin A: 18500IU, Vitamin D3: 1200IU, Iron [3b103]: 40mg, Iodine [3b201, 3b202]: 4mg, Copper [3b405, 3b406]: 12mg, Manganese [3b502, 3b504]: 52mg, Zinc [3b603, 3b605, 3b606]: 131mg, Selenium [3b801, 3b811, 3b812]: 0.07mg - Technological additives: Clinoptilolite of sedimentary origin: 10g - Preservatives - Antioxidants.

\*L.I.P.: protein selected for its very high digestibility.



# PUPPY

MEDIUM

3 STAGE



Available in  
1, 4 and 10kg

### FEEDING GUIDELINES

AGE IN MONTHS	KIBBLE ONLY			
	ADULT TARGET WEIGHT			
	11kg	14kg	20kg	25kg
2	155	184	234	245
6	197	237	311	368
10	141	170	224	265
12			219	261
13	MEDIUM ADULT*			259

AGE IN MONTHS	MIX: KIBBLE + WET			
	ADULT TARGET WEIGHT			
	11kg	14kg	20kg	25kg
2	110	130	170	180
6	140	170	220	260
10	100	120	160	190
12			150	180
13	MEDIUM ADULT*			170

1x Pouch 140g PUPPY MEDIUM Chunks in gravy\*

\*Subject to product availability

	2 > 5 months		6 > 10 months
	Always keep fresh drinking water available		Always keep fresh drinking water available
	= 240ml = 94g		Metabolisable energy: 4095Kcal/Kg

## START OF LIFE

### RECOMMENDED FOR

- Medium breed puppies (adult weight 11 to 25kg) from 2 to 12 months old



### IMMUNE SYSTEM SUPPORT

Supports the development of the puppy's healthy immune system with the inclusion of a scientifically proven complex, including vitamins E and C.



### BRAIN DEVELOPMENT

Enriched with an omega-3 fatty acid (DHA) which is scientifically proven to support the puppy's brain development and support early learning.



### MICROBIOME SUPPORT

Combination of prebiotics (MOS) & highly digestible proteins to help promote a healthy balance of intestinal microbiota for digestive health.

### ANALYTICAL CONSTITUENTS

Moisture	8.0%
Protein	32%
Fat content	20%
Crude fibre	1.6%
Crude ash	8.6%
NFE	29.8%

### AMINO ACIDS (TOTAL)

Taurine (%)	0.48
-------------	------

### MINERALS (TOTAL)

Calcium (%)	1.41	Potassium (%)	0.8
Phosphorus (%)	1.07	Magnesium (%)	0.1
Sodium (%)	0.4	Copper (mg/kg)	17
Chloride (%)	1	Zinc (mg/kg)	170

### VITAMINS (TOTAL)

Vit. A (IU/kg)	17500	Vit. C (mg/kg)	400
Vit. D3 (IU/kg)	1000	Vit. E (mg/kg)	520

### OTHER GUARANTEES (TOTAL)

Dietary fibre (%)	7.7	EPA + DHA (%)	0.32
Omega 6 (%)	3.66	L-carnitine (mg/kg)	0
Omega 3 (%)	0.72	DHA (%)	0.17
Glucosamine + Chondroitin (mg/kg)			0

### CALCULATED METABOLISABLE ENERGY (TOTAL)

Energy_NRC 85 (kcal/kg)	3863
Energy_NRC 2006 (CF) (kcal/kg)	4095

### COMPOSITION

Dehydrated poultry protein, animal fats, maize, wheat gluten\*, beet pulp, dehydrated pork protein\*, maize gluten, rice, wheat flour, hydrolysed animal proteins, wheat, maize flour, minerals, soya oil, yeasts products, fish oil, fructo-oligo-saccharides, hydrolysed yeast (source of manno-oligo-saccharides and beta-glucans) (0.30%), algal oil Schizochytrium sp. (source of DHA), Yucca Schidigera juice, marigold meal.

### ADDITIVES (KG)

Nutritional additives: Vitamin A: 15500IU, Vitamin D3: 1000IU, Iron [3b103]: 38mg, Iodine [3b201, 3b202]: 3.8mg, Copper [3b405, 3b406]: 12mg, Manganese [3b502, 3b504]: 50mg, Zinc [3b603, 3b605, 3b606]: 132mg, Selenium [3b801, 3b811, 3b812]: 0.06mg - Technological additives: Clinoptilolite of sedimentary origin: 10g - Preservatives - Antioxidants.

\*L.I.P.: protein selected for its very high digestibility.





# PUPPY

## MEDIUM

3 STAGE



Available in box of 10 pouches of 140g

### FEEDING GUIDELINES

AGE IN MONTHS	POUCH ONLY		
	ADULT WEIGHT		
	12kg	18kg	24kg
2	4+1/2	6	7
4	6	8	9
8	5	7	9
10	4+1/2	6	7+1/2
11	4	6	7

OR

AGE IN MONTHS	KIBBLE* AND POUCH		
	ADULT WEIGHT		
	12kg	18kg	24kg
2	128g	181g	205g
4	170g	242g	284g
8	134g	211g	283g
10	114g	169g	220g
11	113g	167g	218g

\*ROYAL CANIN® PUPPY MEDIUM

Metabolisable energy: 975kcal/kg

## START OF LIFE

### RECOMMENDED FOR

- Medium breed puppies (adult weight 11 to 25kg) from 2 to 12 months old



### SOFT TEXTURE FOR BABY TEETH

Perfect chunk size, texture & taste for growing medium breed puppies.



### IMMUNE SYSTEM SUPPORT

Supports the development of the puppy's healthy immune system with the inclusion of a scientifically proven complex, including vitamins E and C.



### BRAIN DEVELOPMENT

Enriched with an omega-3 fatty acid (DHA) which is scientifically proven to support the puppy's brain development and support early learning.

### ANALYTICAL CONSTITUENTS

Moisture	78.4%
Protein	8.4%
Fat content	6%
Crude fibre	1%
Crude ash	2%
NFE	4.3%

### AMINO ACIDS (TOTAL)

Taurine (%)	0.12
-------------	------

### MINERALS (TOTAL)

Calcium (%)	0.35	Potassium (%)	0.17
Phosphorus (%)	0.27	Magnesium (%)	0.019
Sodium (%)	0.18	Copper (mg/kg)	4.2
Chloride (%)	0.23	Zinc (mg/kg)	29

### VITAMINS (TOTAL)

Vit. A (IU/kg)	8000	Vit. C (mg/kg)	95
Vit. D3 (IU/kg)	145	Vit. E (mg/kg)	160

### OTHER GUARANTEES (TOTAL)

Dietary fibre (%)	1.5	EPA + DHA (%)	0.11
Omega 6 (%)	2.3	L-carnitine (mg/kg)	0
Omega 3 (%)	0.19	DHA (%)	0.05
Glucosamine + Chondroitin (mg/kg)	0		

### CALCULATED METABOLISABLE ENERGY (TOTAL)

Energy_NRC 85 (kcal/kg)	951
Energy_NRC 2006 (CF) (kcal/kg)	975

### COMPOSITION

Meat and animal derivatives, oils and fats, cereals, vegetable protein extracts, minerals, derivatives of vegetable origin, yeasts.

### ADDITIVES (KG)

Nutritional additives: Vitamin D3: 150IU, Iron (3b103): 6mg, Iodine (3b202): 0.34mg, Copper (3b405, 3b406): 2.7mg, Manganese (3b502, 3b503, 3b504): 1.9mg, Zinc (3b603, 3b605, 3b606): 19mg - Technological additives: Clinoptilolite of sedimentary origin: 2g.



# STARTER

## MOTHER & BABYDOG

## MAXI

2 STAGE



Available in 15kg

### FEEDING GUIDELINES

24H ADULT TARGET WEIGHT	WEANING PUPPY					
	KIBBLE ONLY OR			MIX KIBBLE + WET		
	AGE IN WEEKS			AGE IN WEEKS		
BABYDOG MILK*	0 - 3	3 - 6	6 - 8	3 - 6	6 - 8	
	grams per day		grams per day	grams per day		grams per day
	26kg	138	253	89	203	
	30kg	138	253	92	208	
	35kg	157	283	107	233	
40kg	157	283	107	233		
44kg	157	283	107	233		



1x Can 195g STARTER MOTHER & BABYDOG Ultra Soft mousse\*

### GESTATING MOTHER

MOTHER WEIGHT	GESTATING MOTHER					
	KIBBLE ONLY OR			MIX KIBBLE + WET		
	GESTATION IN WEEKS			GESTATION IN WEEKS		
	6	8		6	8	
	grams per day		grams per day	grams per day		grams per day
	26kg	334	395	317	384	
	30kg	372	439	361	436	
	35kg	417	493	406	491	
40kg	461	545	456	546		
44kg	495	585	501	601		



1x Can 195g STARTER MOTHER & BABYDOG Ultra Soft mousse\*

\*Subject to product availability

Lactating mother  $\rightarrow$  AD LIBITUM

	Always keep fresh drinking water available		= 240ml = 89g	Metabolisable energy: 4173Kcal/Kg
--	--	--	---------------	-----------------------------------

## START OF LIFE

### RECOMMENDED FOR

- Adult large breed bitches at the end of gestation and during lactation (adult weight 26 to 44kg)
- Weaning large breed puppies up to 2 months old (adult weight 26 to 44kg)



### MOTHER & BABYDOG'S HEALTH SUPPORT

MAXI STARTER is a unique nutritional solution which is adapted to the mother's high energy needs at the end of gestation and during lactation for nursing puppies' optimal growth.



### IMMUNE SYSTEM SUPPORT

Supports the development of the puppy's healthy immune system with the inclusion of a scientifically proven complex, including vitamins E and C.



### MICROBIOME SUPPORT

Combination of prebiotics (MOS) & highly digestible proteins to help promote a healthy balance of intestinal microbiota for digestive health.

### ANALYTICAL CONSTITUENTS

Moisture	8%
Protein	30%
Fat content	22%
Crude fibre	1.8%
Crude ash	8.4%
NFE	29.8%

### AMINO ACIDS (TOTAL)

Taurine (%)	0.5
-------------	-----

### MINERALS (TOTAL)

Calcium (%)	1.43	Potassium (%)	0.7
Phosphorus (%)	1.05	Magnesium (%)	0.08
Sodium (%)	0.4	Copper (mg/kg)	15
Chloride (%)	1.1	Zinc (mg/kg)	170

### VITAMINS (TOTAL)

Vit. A (IU/kg)	20000	Vit. C (mg/kg)	400
Vit. D3 (IU/kg)	1200	Vit. E (mg/kg)	500

### OTHER GUARANTEES (TOTAL)

Dietary fibre (%)	6.4	EPA + DHA (%)	0.37
Omega 6 (%)	4.4	L-carnitine (mg/kg)	0
Omega 3 (%)	0.89	DHA (%)	0.19
Glucosamine + Chondroitin (mg/kg)	0		

### CALCULATED METABOLISABLE ENERGY (TOTAL)

Energy_NRC 85 (kcal/kg)	3963
Energy_NRC 2006 (CF) (kcal/kg)	4173

### COMPOSITION

Rice, dehydrated poultry protein, animal fats, wheat gluten\*, maize, hydrolysed animal proteins, minerals, beet pulp, soya oil, vegetable fibres, fish oil, psyllium husks and seeds, fructo-oligo-saccharides, hydrolysed yeast (source of manno-oligo-saccharides and betagalactans) (0.30%), algal oil Schizochytrium sp. (source of DHA), butyric acid salt, marigold meal.

### ADDITIVES (KG)

Nutritional additives: Vitamin A: 18500IU, Vitamin D3: 1200IU, Iron (3b103): 42mg, Iodine (3b201, 3b202): 4.2mg, Copper (3b405, 3b406): 13mg, Manganese (3b502, 3b504): 55mg, Zinc (3b603, 3b605, 3b606): 136mg, Selenium (3b801, 3b811, 3b812): 0.06mg - Technological additives: Clinoptilolite of sedimentary origin: 10g - Preservatives - Antioxidants.

\*L.I.P.: protein selected for its very high digestibility.





# PUPPY

## MAXI

3  
STAGE



CONTAINS  
ANTIOXIDANTS

Available in  
1, 4 and 10kg

### FEEDING GUIDELINES

AGE IN MONTHS	KIBBLE ONLY			
	26kg	ADULT TARGET WEIGHT 30kg	40kg	44kg
	grams per day	grams per day	grams per day	grams per day
2	267	277	301	310
6	408	454	563	604
8	378	423	529	602
12	291	324	406	437
13	MAXI ADULT*			

### OR

AGE IN MONTHS	MIX: KIBBLE + WET			
	26kg	ADULT TARGET WEIGHT 30kg	40kg	44kg
	grams per day	grams per day	grams per day	grams per day
2	233	242	266	276
6	374	420	528	570
8	343	389	495	567
12	258	289	372	403
13	MAXI ADULT*			

\*Subject to product availability

2 ▶ 5 months	6 ▶ 15 months
Always keep fresh drinking water available	Metabolisable energy: 3791Kcal/Kg
	= 240ml = 96g

## START OF LIFE

### RECOMMENDED FOR

- Large breed puppies (adult weight 26 to 44kg) from 2 to 15 months old



### IMMUNE SYSTEM SUPPORT

Supports the development of the puppy's healthy immune system with the inclusion of a scientifically proven complex, including vitamins E and C.



### BRAIN DEVELOPMENT

Enriched with an omega-3 fatty acid (DHA) which is scientifically proven to support the puppy's brain development and support early learning.



### MICROBIOME SUPPORT

Combination of prebiotics (MOS) & highly digestible proteins to help promote a healthy balance of intestinal microbiota for digestive health.

### ANALYTICAL CONSTITUENTS

Moisture	9.5%
Protein	30%
Fat content	16%
Crude fibre	2.5%
Crude ash	8.2%
NFE	33.8%

### AMINO ACIDS (TOTAL)

Taurine (%)	0.45
-------------	------

### MINERALS (TOTAL)

Calcium (%)	1.4	Potassium (%)	0.6
Phosphorus (%)	1.07	Magnesium (%)	0.07
Sodium (%)	0.4	Copper (mg/kg)	15
Chloride (%)	0.78	Zinc (mg/kg)	170

### VITAMINS (TOTAL)

Vit. A (IU/kg)	17000	Vit. C (mg/kg)	390
Vit. D3 (IU/kg)	1000	Vit. E (mg/kg)	480

### OTHER GUARANTEES (TOTAL)

Dietary fibre (%)	7.8	EPA + DHA (%)	0.29
Omega 6 (%)	2.77	L-carnitine (mg/kg)	0
Omega 3 (%)	0.61	DHA (%)	0.16
Glucosamine + Chondroitin (mg/kg)	500		

### CALCULATED METABOLISABLE ENERGY (TOTAL)

Energy_NRC 85 (kcal/kg)	3593
Energy_NRC 2006 (CF) (kcal/kg)	3791

### COMPOSITION

Dehydrated poultry protein, maize flour, rice, dehydrated pork protein\*, animal fats, maize, wheat gluten\*, wheat flour, hydrolysed animal proteins, minerals, beet pulp, maize gluten, vegetable fibres, soya oil, fish oil, fructo-oligo-saccharides, psyllium husks and seeds, hydrolysed yeast (source of manno-oligo-saccharides and beta-glucans) (0.30%), algal oil Schizochytrium sp. (source of DHA), Yucca Schidigera juice, marigold meal, glucosamine from fermentation, hydrolysed cartilage (source of chondroitin).

### ADDITIVES (KG)

Nutritional additives: Vitamin A: 15500IU, Vitamin D3: 1000IU, Iron [3b103]: 42mg, Iodine [3b201, 3b202]: 4.2mg, Copper [3b405, 3b406]: 13mg, Manganese [3b502, 3b504]: 54mg, Zinc [3b603, 3b605, 3b606]: 136mg, Selenium [3b801, 3b811, 3b812]: 0.07mg - Technological additives: Clinoptilolite of sedimentary origin: 10g - Preservatives - Antioxidants.

\*L.I.P.: protein selected for its very high digestibility.

# PUPPY

## MAXI

3  
STAGE



NO PRESERVATIVES  
IN GRAVY

Available in  
box of 10 pouches  
of 140g

### FEEDING GUIDELINES

AGE IN MONTHS	POUCH ONLY		
	ADULT WEIGHT		
	30kg	35kg	40kg
2	8	8+1/2	9
4	11	12	12+1/2
8	12+1/2	14	15+1/2
12	9+1/2	10+1/2	12
14	9+1/2	10+1/2	11+1/2

### OR

AGE IN MONTHS	KIBBLE* AND POUCH		
	ADULT WEIGHT		
	30kg	35kg	40kg
2	241g	253g	265g
4	342g	367g	392g
8	387g	438g	492g
12	288g	320g	370g
14	285g	325g	362g

\*ROYAL CANIN® PUPPY MAXI

Metabolisable energy: 931kcal/kg

## START OF LIFE

### RECOMMENDED FOR

- Large breed puppies (adult weight 26 to 44kg) from 2 to 15 months old



### SOFT TEXTURE FOR BABY TEETH

Perfect chunk size, texture & taste for growing medium breed puppies.



### IMMUNE SYSTEM SUPPORT

Supports the development of the puppy's healthy immune system with the inclusion of a scientifically proven complex, including vitamins E and C.



### BRAIN DEVELOPMENT

Enriched with an omega-3 fatty acid (DHA) which is scientifically proven to support the puppy's brain development and support early learning.

### ANALYTICAL CONSTITUENTS

Moisture	79.7%
Protein	8.3%
Fat content	5%
Crude fibre	1.2%
Crude ash	2%
NFE	3.8%

### AMINO ACIDS (TOTAL)

Taurine (%)	0.11
-------------	------

### MINERALS (TOTAL)

Calcium (%)	0.33	Potassium (%)	0.15
Phosphorus (%)	0.25	Magnesium (%)	0.018
Sodium (%)	0.21	Copper (mg/kg)	4.3
Chloride (%)	0.19	Zinc (mg/kg)	25

### VITAMINS (TOTAL)

Vit. A (IU/kg)	37500	Vit. C (mg/kg)	85
Vit. D3 (IU/kg)	150	Vit. E (mg/kg)	150

### OTHER GUARANTEES (TOTAL)

Dietary fibre (%)	1.7	EPA + DHA (%)	0.11
Omega 6 (%)	1.5	L-carnitine (mg/kg)	0
Omega 3 (%)	0.18		
Glucosamine + Chondroitin (mg/kg)	0		

### CALCULATED METABOLISABLE ENERGY (TOTAL)

Energy_NRC 85 (kcal/kg)	849
Energy_NRC 2006 (TDF) (kcal/kg)	931

### COMPOSITION

Meat and animal derivatives, cereals, vegetable protein extracts, oils and fats, derivatives of vegetable origin, minerals, yeasts.

### ADDITIVES (KG)

Nutritional additives: Vitamin D3: 150IU, Iron [3b103]: 5mg, Iodine [3b202]: 0.34mg, Copper [3b405, 3b406]: 2.7mg, Manganese [3b502, 3b503, 3b504]: 1.4mg, Zinc [3b603, 3b605, 3b606]: 14mg - Technological additives: Clinoptilolite of sedimentary origin: 2g.

# PUPPY

## GIANT

3  
STAGE



Available in  
15kg

### FEEDING GUIDELINES

AGE IN MONTHS	KIBBLE ONLY					
	45kg grams per day	60kg grams per day	ADULT TARGET WEIGHT 70kg grams per day	80kg grams per day	90kg grams per day	100kg grams per day
2	311	397	420	449	491	531
3	409	508	555	604	660	714
4	452	560	619	672	734	795
8	609	760	854	944	1031	1116
9+	<b>GIANT JUNIOR*</b>					

\*Subject to product availability

2 ▶ 6 months	7 ▶ 8 months
 Always keep fresh drinking water available	 Metabolisable energy: 3812Kcal/Kg
	= 240ml = 86g

## START OF LIFE

### RECOMMENDED FOR

- Giant breed puppies (adult weight over 45kg) from 2 to 8 months old



### IMMUNE SYSTEM SUPPORT

Supports the development of the puppy's healthy immune system with the inclusion of a scientifically proven complex, including vitamins E and C.



### 1<sup>ST</sup> GROWTH STAGE: INTENSE GROWTH - CONTROLLED ENERGY

This formula supports your giant breed puppy's unique nutritional needs from 2 to 8 months and helps limit excess weight gain.



### MICROBIOME SUPPORT

Combination of prebiotics (MOS) & highly digestible proteins to help promote a healthy balance of intestinal microbiota for digestive health.

### ANALYTICAL CONSTITUENTS

Moisture	9.5%
Protein	34%
Fat content	14%
Crude fibre	1.3%
Crude ash	7.9%
NFE	33.3%

### AMINO ACIDS (TOTAL)

Taurine (%)	0.44
-------------	------

### MINERALS (TOTAL)

Calcium (%)	1.31	Potassium (%)	0.6
Phosphorus (%)	1	Magnesium (%)	0.07
Sodium (%)	0.4	Copper (mg/kg)	15
Chloride (%)	0.92	Zinc (mg/kg)	170

### VITAMINS (TOTAL)

Vit. A (IU/kg)	18000	Vit. C (mg/kg)	370
Vit. D3 (IU/kg)	1100	Vit. E (mg/kg)	490

### OTHER GUARANTEES (TOTAL)

Dietary fibre (%)	6.9	EPA + DHA (%)	0.29
Omega 6 (%)	3.01	L-carnitine (mg/kg)	310
Omega 3 (%)	0.62		
Glucosamine + Chondroitin (mg/kg)			300

### CALCULATED METABOLISABLE ENERGY (TOTAL)

Energy_NRC 85 (kcal/kg)	3546
Energy_NRC 2006 (CF) (kcal/kg)	3812

### COMPOSITION

Dehydrated poultry protein, wheat gluten\*, rice, maize, maize flour, animal fats, wheat flour, beet pulp, hydrolysed animal proteins, minerals, maize gluten, soya oil, yeasts products, fish oil, fructo-oligo-saccharides, psyllium husks and seeds, hydrolysed yeast (source of manno-oligo-saccharides and beta-glucans) (0.30%), algal oil Schizochytrium sp. (source of DHA), Yucca Schidigera juice, marigold meal, glucosamine from fermentation, hydrolysed cartilage (source of chondroitin).

### ADDITIVES (KG)

Nutritional additives: Vitamin A: 16500IU, Vitamin D3: 1100IU, Iron [3b103]: 36mg, Iodine [3b201, 3b202]: 3.6mg, Copper [3b405, 3b406]: 11mg, Manganese [3b502, 3b504]: 47mg, Zinc [3b603, 3b605, 3b606]: 128mg, Selenium [3b801, 3b811, 3b812]: 0.05mg - Technological additives: Clinoptilolite of sedimentary origin: 10g - Preservatives - Antioxidants.

\*L.I.P.: protein selected for its very high digestibility.



# JUNIOR

## GIANT

4  
STAGE



Available in  
15kg

### FEEDING GUIDELINES

AGE IN MONTHS	KIBBLE ONLY					
	45kg grams per day	60kg grams per day	ADULT TARGET WEIGHT 70kg grams per day	80kg grams per day	90kg grams per day	100kg grams per day
8	594	742	834	921	1006	1089
10	519	655	783	883	964	1044
14	425	533	602	700	765	828
18		526	595	660	721	781
24	<b>GIANT ADULT*</b>					

\*Subject to product availability

8 ▶ 24 months
 Always keep fresh drinking water available
= 240ml = 86g
Metabolisable energy: 3906Kcal/Kg

## START OF LIFE

### RECOMMENDED FOR

- Giant breed puppies (adult weight over 45kg) from 8 to 18/24 months old



### IMMUNE SYSTEM SUPPORT

Supports the development of the puppy's healthy immune system with the inclusion of a scientifically proven complex, including vitamins E and C.



### 2<sup>ND</sup> GROWTH STAGE: MUSCLE DEVELOPMENT

As your giant breed puppy gains more muscle during the second growth stage, an adapted protein content helps support muscle development from 8 to 18-24 months old.



### MICROBIOME SUPPORT

Combination of prebiotics (MOS) & highly digestible proteins to help promote a healthy balance of intestinal microbiota for digestive health.

### ANALYTICAL CONSTITUENTS

Moisture	9.5%
Protein	31%
Fat content	16%
Crude fibre	1.3%
Crude ash	7.6%
NFE	34.6%

### AMINO ACIDS (TOTAL)

Taurine (%)	0.46
-------------	------

### MINERALS (TOTAL)

Calcium (%)	1.3	Potassium (%)	0.7
Phosphorus (%)	0.99	Magnesium (%)	0.08
Sodium (%)	0.41	Copper (mg/kg)	15
Chloride (%)	0.86	Zinc (mg/kg)	170

### VITAMINS (TOTAL)

Vit. A (IU/kg)	18000	Vit. C (mg/kg)	380
Vit. D3 (IU/kg)	1100	Vit. E (mg/kg)	480

### OTHER GUARANTEES (TOTAL)

Dietary fibre (%)	6.8	EPA + DHA (%)	0.31
Omega 6 (%)	2.99	L-carnitine (mg/kg)	305
Omega 3 (%)	0.66		
Glucosamine + Chondroitin (mg/kg)			500

### CALCULATED METABOLISABLE ENERGY (TOTAL)

Energy_NRC 85 (kcal/kg)	3656
Energy_NRC 2006 (CF) (kcal/kg)	3906

### COMPOSITION

Dehydrated poultry protein, maize, maize flour, rice, animal fats, wheat gluten\*, wheat flour, beet pulp, hydrolysed animal proteins, minerals, soya oil, yeasts products, fish oil, fructo-oligo-saccharides, psyllium husks and seeds, hydrolysed yeast (source of manno-oligo-saccharides and beta-glucans) (0.30%), algal oil Schizochytrium sp. (source of DHA), Yucca Schidigera juice, marigold meal, glucosamine from fermentation, hydrolysed cartilage (source of chondroitin).

### ADDITIVES (KG)

Nutritional additives: Vitamin A: 16500IU, Vitamin D3: 1100IU, Iron [3b103]: 35mg, Iodine [3b201, 3b202]: 3.6mg, Copper [3b405, 3b406]: 11mg, Manganese [3b502, 3b504]: 46mg, Zinc [3b603, 3b605, 3b606]: 129mg, Selenium [3b801, 3b811, 3b812]: 0.06mg - Technological additives: Clinoptilolite of sedimentary origin: 10g - Preservatives - Antioxidants.

\*L.I.P.: protein selected for its very high digestibility.



# TAILORED NUTRITIONAL SOLUTIONS FOR PUPPIES AND KITTENS WITH IDENTIFIED SENSITIVITIES



**AVAILABLE  
NOW**

# PUPPY AND KITTEN GROWTH CHARTS



MAINTAINING  
OPTIMAL WEIGHT

GASTROINTESTINAL  
DISORDERS

NUTRIENT  
INTOLERANCE



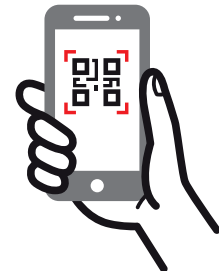
NEUTERED JUNIOR NEUTERED JUNIOR  
LARGE DOGS

GASTROINTESTINAL KITTEN GASTROINTESTINAL PUPPY

HYPOALLERGENIC PUPPY



Order your Growth Charts pack from your Veterinary Business Manager, or visit the Royal Canin Vet Portal





[WWW.ROYALCANIN.COM/UK](http://WWW.ROYALCANIN.COM/UK)

**NUTRITIONAL HELPLINE**

+44(0)800 717800

(IRE) 01800 936074