





## FELINE

- EARLY RENAL
- RENAL
- RENAL SPECIAL
- RENAL SELECT
- RENAL LIQUID
- MULTIFUNCTION  
RENAL | HYPOALLERGENIC
- MOBILITY



## CANINE

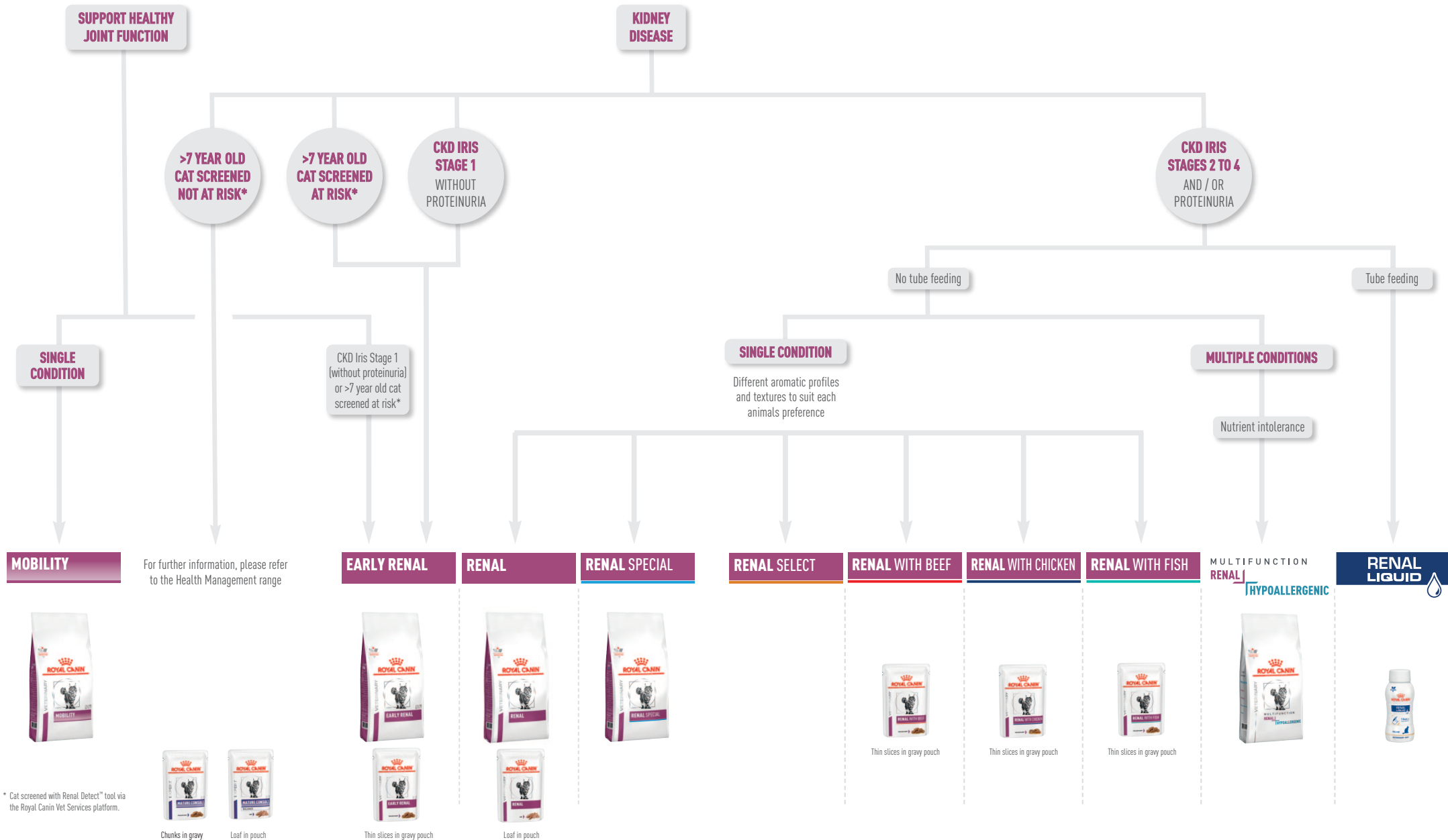
- EARLY RENAL
  - RENAL
  - RENAL
  - RENAL SPECIAL
  - RENAL SELECT
  - RENAL LIQUID
- MULTIFUNCTION  
RENAL | HYPOALLERGENIC
- MOBILITY SUPPORT
- CARDIAC
- SMALL DOGS **S**

This resource has been produced with the greatest care and incorporates the most up-to-date scientific information and research findings. We recommend that you refer to our packaging as the primary reference for product information as this can change with time. Bearing in mind the diversity and complexity of clinical cases in dogs and cats, it is important to note that the suggestions in this resource for further tests and therapeutic options cannot be exhaustive. Under no circumstances should the treatments and dietary solutions suggested here replace examination by a veterinary surgeon.

The publishers and the authors will accept no responsibility for the failure of any of the treatments or nutritional solutions put forward in this resource. Not for use in Canada and in USA.

While the information is considered to be true and correct at the date of publication (**January 2023**), changes in circumstances after the time of publication may impact on the accuracy of the information.

# FELINE NUTRITIONAL MANAGEMENT DECISION TREE



\* Cat screened with Renal Detect™ tool via the Royal Canin Vet Services platform.



# EARLY RENAL



Available in  
400g, 1.5,  
3.5 and 6kg bags

## RECOMMENDED DAILY INTAKE & FEEDING DURATION

ADULT CAT	CAT'S WEIGHT (kg)	BODY CONDITION					
		THIN		NORMAL		OVERWEIGHT	
		grams	cups	grams	cups	grams	cups
	<b>2</b>	40	4/8	33	3/8	27	3/8
	<b>2.5</b>	47	5/8	39	4/8	31	3/8
	<b>3</b>	53	5/8	45	4/8	36	4/8
	<b>3.5</b>	60	6/8	50	5/8	40	4/8
	<b>4</b>	65	6/8	55	5/8	44	4/8
	<b>4.5</b>	71	7/8	59	6/8	47	5/8
	<b>5</b>	77	1	64	6/8	51	5/8
	<b>5.5</b>	82	1	68	7/8	55	5/8
	<b>6</b>	87	1 + 1/8	73	7/8	58	6/8
	<b>6.5</b>	92	1 + 1/8	77	1	62	6/8
	<b>7</b>	97	1 + 2/8	81	1	65	6/8
	<b>7.5</b>	102	1 + 2/8	85	1	68	7/8
	<b>8</b>	107	1 + 2/8	89	1 + 1/8	71	7/8
	<b>8.5</b>	112	1 + 3/8	93	1 + 1/8	75	7/8
	<b>9</b>	116	1 + 3/8	97	1 + 2/8	78	1
	<b>9.5</b>	121	1 + 4/8	101	1 + 2/8	81	1
	<b>10</b>	126	1 + 4/8	105	1 + 2/8	84	1

\*Early Renal diet is recommended for cats in the early stages of CKD (stage 1) without proteinuria, or senior cats over the age of 7 years screened at risk with Renal Detect™ tool via the Royal Canin Veterinary Services platform. If proteinuria is present or they are in stage 2-4, then Renal diet is indicated.

**[S/O INDEX]** This diet is formulated to promote a healthy urinary environment.

## KIDNEY DISORDERS

### RECOMMENDED FOR CASES OF

- Early Chronic Kidney Disease without proteinuria (IRIS stage 1\*)
- And/or
- Senior cats over 7 years of age screened at risk<sup>1</sup>.

### NOT RECOMMENDED IN CASE OF

- Growth, gestation/lactation

<sup>1</sup> cats screened at risk with Renal Detect™ tool via the Royal Canin Veterinary Services platform.



### EARLY RENAL SUPPORT

Formulated with moderate phosphorus, EPA+DHA and an antioxidant complex to support the kidneys in the early stages of chronic renal insufficiency.



### AGE SUPPORT

Formulated with nutrients, including antioxidants and New Zealand Green-Lipped Mussel extract, to support healthy ageing.



### DIGESTIVE SUPPORT

A highly digestible formula with balanced fibres, including prebiotics, to support a healthy digestion and transit.

KEY VALUES	Per 1000Kcal	Per 100g as fed
Moisture	14.44g	5.50g
Protein	73.53g	28.00g
Fat content	36.76g	14.00g
Crude fibre	13.39g	5.10g
Crude ash	14.44g	5.50g
Carbohydrate (NFE)	109.77g	41.80g
Dietary fibre	34.14g	13.00g
Omega 6	9.22g	3.51g
Omega 3	3.44g	1.31g
EPA + DHA	2.05g	0.78g
Glucosamine + Chondroitin	262.61mg	100.00mg
Calcium	1.84g	0.70g
Phosphorus	1.31g	0.50g
Sodium	1.05g	0.40g
Potassium	1.84g	0.70g
Magnesium	0.16g	0.06g
Vitamin E	131.30 IU	50.00 IU

### CALCULATED METABOLISABLE ENERGY (TOTAL)

Energy\_NRC 2006 (CF) (kcal/kg) 380.80

Essential Fatty acids 3.38 %.

### COMPOSITION

Maize, wheat gluten\*\*, maize flour, wheat, maize gluten, animal fats, dehydrated poultry protein, vegetable fibres, rice, hydrolysed animal proteins, chicory pulp, minerals, fish oil, soya oil, dried tomato pulp (source of lycopene), psyllium husks and seeds, fructo-oligo-saccharides (0.5%), New Zealand green-lipped mussel extract (GLM) (0.3%), hydrolysed yeast (source of Mannan-oligo-saccharides) (0.2%), borage oil, glucosamine from fermentation, marigold extract (source of lutein), hydrolysed cartilage (source of chondroitin). Protein sources: wheat gluten\*\*, maize gluten, dehydrated poultry protein, hydrolysed animal proteins.

\*\*L.I.P.: protein selected for its very high digestibility.

### ADDITIVES (KG)\*\*\*

Nutritional additives: Vitamin A: 21500 IU, Vitamin D3: 800 IU, Iron (3b103): 42 mg, Iodine (3b201, 3b202): 4.2 mg, Copper (3b405, 3b406): 13 mg, Manganese (3b502, 3b504): 55 mg, Zinc (3b603, 3b605, 3b606): 144 mg, Selenium (3b801, 3b811, 3b812): 0.07 mg - Preservatives - Antioxidants.

\*\*\*Values reflect only levels added to the formula, not those naturally occurring in components of the diet.



# EARLY RENAL



THIN SLICES IN GRAVY

Available in box  
of 12 pouches  
of 85g

## RECOMMENDED DAILY INTAKE & FEEDING DURATION

ADULT CAT	CAT'S WEIGHT (kg)	BODY CONDITION					
		THIN		NORMAL		OVERWEIGHT	
		grams	pouch	grams	pouch	grams	pouch
	<b>2</b>	145	1 + 1/2	120	1 + 1/2	100	1
	<b>2.5</b>	170	2	145	1 + 1/2	115	1 + 1/2
	<b>3</b>	195	2 + 1/2	165	2	130	1 + 1/2
	<b>3.5</b>	220	2 + 1/2	180	2	145	1 + 1/2
	<b>4</b>	240	3	200	2 + 1/2	160	2
	<b>4.5</b>	260	3	220	2 + 1/2	175	2
	<b>5</b>	280	3 + 1/2	235	3	190	2
	<b>5.5</b>	300	3 + 1/2	250	3	200	2 + 1/2
	<b>6</b>	320	4	265	3	215	2 + 1/2
	<b>6.5</b>	340	4	285	3 + 1/2	225	2 + 1/2
	<b>7</b>	355	4	300	3 + 1/2	240	3
	<b>7.5</b>	375	4 + 1/2	315	3 + 1/2	250	3
	<b>8</b>	395	4 + 1/2	330	4	260	3
	<b>8.5</b>	410	5	340	4	275	3
	<b>9</b>	425	5	355	4	285	3 + 1/2
	<b>9.5</b>	445	5	370	4 + 1/2	295	3 + 1/2
	<b>10</b>	460	5 + 1/2	385	4 + 1/2	305	3 + 1/2

\*Early Renal diet is recommended for cats in the early stages of CKD (stage 1) without proteinuria, or senior cats over the age of 7 years screened at risk with Renal Detect™ tool via the Royal Canin Veterinary Services platform. If proteinuria is present or they are in stage 2-4, then Renal diet is indicated.

**[S/O INDEX]** This diet is formulated to promote a healthy urinary environment.

## KIDNEY DISORDERS

### RECOMMENDED FOR CASES OF

- Early Chronic Kidney Disease without proteinuria (IRIS stage 1\*)
- And/or
- Senior cats over 7 years of age screened at risk<sup>1</sup>.

### NOT RECOMMENDED IN CASE OF

- Growth, gestation/lactation

<sup>1</sup> cats screened at risk with Renal Detect™ tool via the Royal Canin Veterinary Services platform.



### EARLY RENAL SUPPORT

Formulated with moderate phosphorus, EPA+DHA and an antioxidant complex to support the kidneys in the early stages of chronic renal insufficiency.



### AGE SUPPORT

Formulated with nutrients, including antioxidants and glucosamine and chondroitin, to support healthy ageing.



### DIGESTIVE SUPPORT

A highly digestible formula with balanced fibres, including prebiotics, to support a healthy digestion and transit.

KEY VALUES	Per 1000Kcal	Per 100g as fed
Moisture	797.55g	78.00g
Protein	86.91g	8.50g
Fat content	51.12g	5.00g
Crude fibre	11.25g	1.10g
Crude ash	13.29g	1.30g
Carbohydrate (NFE)	62.37g	6.10g
Dietary fibre	18.40g	1.80g
Omega 6	13.29g	1.30g
Omega 3	2.56g	0.25g
EPA + DHA	1.58g	0.155g
Glucosamine + Chondroitin	224.95mg	22.00mg
Calcium	1.84g	0.18g
Phosphorus	1.53g	0.15g
Sodium	0.92g	0.09g
Potassium	1.64g	0.16g
Magnesium	0.14g	0.014g
Vitamin E	122.70 IU	12.00 IU

### CALCULATED METABOLISABLE ENERGY (TOTAL)

Energy\_NRC 2006 (CF) (kcal/100g) 97.80

Essential Fatty acids 1.25 %.

### COMPOSITION

Pork by-products\*\*, poultry by-products\*\*, chicken meat\*\*, wheat flour, pork blood products\*\*, powder cellulose, corn starch mixture, sunflower oil refined, fish oil, vital wheat gluten, crude lecithins, minerals, dried tomato pulp, yeasts and part thereof, glucosamine, marigold extract (source of lutein), hydrolysed cartilage (source of chondroitin).

\*\*Protein sources.

### ADDITIVES (KG)\*\*\*

Nutritional additives: Vitamin D3: 340 IU, Iron (3b103): 4mg, Iodine (3b202): 0.35mg, Copper (3b405, 3b406): 2.9mg, Manganese (3b502, 3b503, 3b504): 1.3mg, Zinc (3b603, 3b605, 3b606): 13mg - Technological additives: clineptilolite of sedimentary origin: 0.2g.

\*\*\*Values reflect only levels added to the formula, not those naturally occurring in components of the diet.



# RENAL



Available in  
400g, 2 and  
4kg bags

## KIDNEY DISORDERS

### RECOMMENDED FOR CASES OF

- Azotaemic Chronic Kidney Disease (IRIS stage 2\* to stage 4)
- Chronic Kidney Disease with proteinuria (IRIS stage 1 to 4)
- Management of calcium oxalate urolith recurrence in cats with impaired renal function
- Prevention of recurrence of urolithiasis requiring urine alkalinisation: urate and cystine uroliths

### NOT RECOMMENDED IN CASE OF

- Growth, gestation/lactation



### RENAL SUPPORT

Formulated with low phosphorus and moderate protein of high quality to support renal function.



### ADAPTED ENERGY

Adapted energy content to reduce meal volume and help support a reduced appetite.



### AROMATIC CHOICE

A specific aromatic profile with a dedicated kibble shape to help stimulate the cat's appetite, particularly in cases of food aversion.

### RECOMMENDED DAILY INTAKE & FEEDING DURATION

ADULT CAT	CAT'S WEIGHT (kg)	BODY CONDITION					
		THIN		NORMAL		OVERWEIGHT	
		grams	cups	grams	cups	grams	cups
	2	39	3/8	32	3/8	26	2/8
	2.5	46	4/8	38	3/8	30	3/8
	3	52	4/8	43	4/8	35	3/8
	3.5	58	5/8	48	4/8	39	3/8
	4	64	5/8	53	4/8	42	4/8
	4.5	69	6/8	58	5/8	46	4/8
	5	74	6/8	62	5/8	50	4/8
	5.5	80	7/8	67	6/8	53	4/8
	6	85	7/8	71	6/8	57	5/8
	6.5	90	1	75	6/8	60	5/8
	7	95	1	79	7/8	63	5/8
	7.5	99	1	83	7/8	66	6/8
	8	104	1 + 1/8	87	7/8	69	6/8
	8.5	109	1 + 1/8	91	1	72	6/8
	9	113	1 + 1/8	94	1	75	6/8
	9.5	118	1 + 2/8	98	1	78	7/8
	10	122	1 + 2/8	102	1 + 1/8	81	7/8

\*Renal diets are recommended for cats in the advanced stages of CKD (stages 2-4). Early Renal may be suitable for cats in early stage 2, under veterinary recommendation.

In case of food aversion, the cat can be switched to another renal option without transition. On top of a renal blood panel, a mineral blood panel follow up may be recommended: in case hypercalcaemia develops, the cat should be switched to Early Renal diet; other mineral disturbances (eg. hypokalaemia) may require additional treatment.

In most cases, Renal diets may be continued for the cat's lifetime.



# RENAL



LOAF

Available in box  
of 12 pouches  
of 85g

## KIDNEY DISORDERS

### RECOMMENDED FOR CASES OF

- Azotaemic Chronic Kidney Disease (IRIS stage 2\* to stage 4)
- Chronic Kidney Disease with proteinuria (IRIS stage 1 to 4)
- Management of calcium oxalate urolith recurrence in cats with impaired renal function
- Prevention of recurrence of urolithiasis requiring urine alkalinisation: urate and cystine uroliths

### NOT RECOMMENDED IN CASE OF

- Growth, gestation/lactation



### RENAL SUPPORT

Formulated with low phosphorus and moderate protein of high quality to support renal function.



### ADAPTED ENERGY

Adapted energy content to reduce meal volume and help support a reduced appetite.



### AROMATIC CHOICE

A specific aromatic profile with a dedicated texture, to help stimulate the cats appetite particularly in cases of food aversion.

### RECOMMENDED DAILY INTAKE & FEEDING DURATION

ADULT CAT	CAT'S WEIGHT (kg)	BODY CONDITION					
		THIN		NORMAL		OVERWEIGHT	
		grams	pouch	grams	pouch	grams	pouch
	2	140	1 + 1/2	115	1 + 1/2	95	1
	2.5	165	2	135	1 + 1/2	110	1 + 1/2
	3	185	2	155	2	125	1 + 1/2
	3.5	210	2 + 1/2	175	2	140	1 + 1/2
	4	230	2 + 1/2	190	2	155	2
	4.5	250	3	210	2 + 1/2	165	2
	5	270	3	225	2 + 1/2	180	2
	5.5	290	3 + 1/2	240	3	190	2
	6	305	3 + 1/2	255	3	205	2 + 1/2
	6.5	325	4	270	3	215	2 + 1/2
	7	340	4	285	3 + 1/2	230	2 + 1/2
	7.5	360	4	300	3 + 1/2	240	3
	8	375	4 + 1/2	315	3 + 1/2	250	3
	8.5	395	4 + 1/2	330	4	260	3
	9	410	5	340	4	275	3
	9.5	425	5	355	4	285	3 + 1/2
	10	440	5	370	4 + 1/2	295	3 + 1/2

\*Renal diets are recommended for cats in the advanced stages of CKD (stages 2-4). Early Renal may be suitable for cats in early stage 2, under veterinary recommendation.

In case of food aversion, the cat can be switched to another renal option without transition. On top of a renal blood panel, a mineral blood panel follow up may be recommended: in case hypercalcaemia develops, the cat should be switched to Early Renal diet; other mineral disturbances (eg. hypokalaemia) may require additional treatment.

In most cases, Renal diets may be continued for the cat's lifetime.



KEY VALUES	Per 1000Kcal	Per 100g as fed
Moisture	14.03g	5.50g
Protein	58.66g	23.00g
Fat content	43.36g	17.00g
Crude fibre	11.73g	4.60g
Crude ash	15.05g	5.90g
Carbohydrate (NFE)	112.22g	44.00g
Dietary fibre	27.29g	10.70g
Omega 6	8.54g	3.35g
Omega 3	2.42g	0.95g
EPA + DHA	1.07g	0.42g
Calcium	1.53g	0.60g
Phosphorus	0.77g	0.30g
Sodium	1.02g	0.40g
Potassium	2.3g	0.90g
Magnesium	0.18g	0.07g
Vitamin D	204.03 IU	80.00 IU
Vitamin E	127.52 IU	50.00 IU

### CALCULATED METABOLISABLE ENERGY (TOTAL)

Energy\_NRC 2006 (CF) (kcal/kg) 392.10

Essential Fatty acids 3.26% - Chloride 1% - Sulphur 0.4% - Hydroxypoline 0%

### COMPOSITION

Maize flour, rice, animal fats, wheat gluten\*\*, maize, soya protein isolate\*\*, vegetable fibres, maize gluten, minerals, hydrolysed animal proteins, chicory pulp, fish oil, soya oil, mono- and diglycerides of palmitic and stearic acids esterified with citric acid, psyllium husks and seeds, fructo-oligo-saccharides, marigold extract (source of lutein). Protein sources: wheat gluten\*\*, soya protein isolate\*\*, maize gluten, hydrolysed poultry protein.

\*\*L.I.P.: protein selected for its very high digestibility.

### ADDITIVES (KG)\*\*\*

Nutritional additives: Vitamin A: 21500 IU, Vitamin D3: 800 IU, Iron [3b103]: 45mg, Iodine [3b201, 3b202]: 4.5mg, Copper [3b405, 3b406]: 14mg, Manganese [3b502, 3b504]: 58mg, Zinc [3b603, 3b605, 3b606]: 153mg, Selenium [3b801, 3b811, 3b812]: 0.08mg - Technological additives: Clinoptilolite of sedimentary origin: 10g - Preservatives - Antioxidants.

\*\*\*Values reflect only levels added to the formula, not those naturally occurring in components of the diet.

KEY VALUES	Per 1000Kcal	Per 100g as fed
Moisture	740.74g	78.00g
Protein	71.23g	7.50g
Fat content	61.73g	6.50g
Crude fibre	8.55g	0.90g
Crude ash	11.40g	1.20g
Carbohydrate (NFE)	56.03g	5.90g
Dietary fibre	20.89g	2.20g
Omega 6	10.45g	1.10g
Omega 3	2.85g	0.30g
EPA + DHA	1.28g	0.135g
Calcium	1.42g	0.15g
Phosphorus	0.95g	0.10g
Sodium	0.85g	0.09g
Potassium	1.90g	0.20g
Magnesium	0.14g	0.015g
Vitamin D	360.87 IU	38.00 IU
Vitamin E	132.95 IU	14.00 IU

### CALCULATED METABOLISABLE ENERGY (TOTAL)

Energy\_NRC 2006 (CF) (kcal/100g) 105.30

\*\*Calculated according to NRC2006 CF. Essential fatty acids 1.15% - Chloride 0.15% - Sulphur 0.13% - Hydroxypoline 0.15%.

### COMPOSITION

Poultry by-products\*\*, pork by-products\*\*, salmon\*\*, maize flour, powdercellulose, psyllium husks and seeds, minerals, pork blood products\*\*, caramelised sugars, fish oil, fructo-oligo-saccharides, sunflower oil refined, marigold extract (source of lutein).

\*\*Protein sources.

### ADDITIVES (KG)\*\*\*

Nutritional additives: Vitamin D3: 240 IU, Iron [3b103]: 9mg, Iodine [3b202]: 0.35mg, Copper [3b405, 3b406]: 2.8mg, Manganese [3b502, 3b503, 3b504]: 2.9mg, Zinc [3b603, 3b605, 3b606]: 29mg - Technological additives: clinoptilolite of sedimentary origin: 0.2g.

\*\*\*Values reflect only levels added to the formula, not those naturally occurring in components of the diet.

# RENAL WITH CHICKEN



THIN SLICES IN GRAVY

Available in box of 12 pouches of **85g**

## RECOMMENDED DAILY INTAKE & FEEDING DURATION

ADULT CAT	CAT'S WEIGHT (kg)	BODY CONDITION					
		THIN		NORMAL		OVERWEIGHT	
		grams	pouch	grams	pouch	grams	pouch
	<b>1.5</b>	100	1	80	1	65	1
	<b>2</b>	120	1 + 1/2	100	1	80	1
	<b>2.5</b>	140	1 + 1/2	115	1 + 1/2	95	1
	<b>3</b>	160	2	135	1 + 1/2	105	1
	<b>3.5</b>	180	2	150	2	120	1 + 1/2
	<b>4</b>	195	2 + 1/2	165	2	130	1 + 1/2
	<b>4.5</b>	215	2 + 1/2	180	2	140	1 + 1/2
	<b>5</b>	230	2 + 1/2	190	2	155	2
	<b>5.5</b>	245	3	205	2 + 1/2	165	2
	<b>6</b>	260	3	220	2 + 1/2	175	2
	<b>6.5</b>	275	3	230	2 + 1/2	185	2
	<b>7</b>	290	3 + 1/2	245	3	195	2 + 1/2
	<b>7.5</b>	305	3 + 1/2	255	3	205	2 + 1/2
	<b>8</b>	320	4	270	3	215	2 + 1/2
	<b>8.5</b>	335	4	280	3 + 1/2	225	2 + 1/2
	<b>9</b>	350	4	290	3 + 1/2	235	3
	<b>9.5</b>	365	4 + 1/2	305	3 + 1/2	240	3
	<b>10</b>	375	4 + 1/2	315	3 + 1/2	250	3

\*Renal diets are recommended for cats in the advanced stages of CKD (stages 2-4). Early Renal may be suitable for cats in early stage 2, under veterinary recommendation.

In case of food aversion, the cat can be switched to another renal option without transition. On top of a renal blood panel, a mineral blood panel follow up may be recommended: in case hypercalcaemia develops, the cat should be switched to Early Renal diet; other mineral disturbances (eg. hypokalaemia) may require additional treatment.

In most cases, Renal diets may be continued for the cat's lifetime.

# KIDNEY DISORDERS

## RECOMMENDED FOR CASES OF

- Azotaemic Chronic Kidney Disease (IRIS stage 2\* to stage 4)
- Chronic Kidney Disease with proteinuria (IRIS stage 1 to 4)
- Management of calcium oxalate urolith recurrence in cats with impaired renal function
- Prevention of recurrence of urolithiasis requiring urine alkalisation: urate and cystine uroliths

## NOT RECOMMENDED IN CASE OF

- Growth, gestation/lactation



## RENAL SUPPORT

Formulated with low phosphorus and moderate protein of high quality to support renal function.



## ADAPTED ENERGY

Adapted energy content to reduce meal volume and help support a reduced appetite.



## AROMATIC CHOICE

A specific aromatic profile with a dedicated texture, to help stimulate the cats appetite particularly in cases of food aversion.

KEY VALUES	Per 1000Kcal	Per 100g as fed
Moisture	654.21g	77.00g
Protein	66.27g	7.80g
Fat content	67.97g	8.00g
Crude fibre	4.25g	0.50g
Crude ash	11.05g	1.30g
Carbohydrate (NFE)	45.88g	5.40g
Dietary fibre	6.80g	0.80g
Omega 6	17.84g	2.10g
Omega 3	2.38g	0.28g
EPA + DHA	1.33g	0.157g
Calcium	1.27g	0.15g
Phosphorus	0.76g	0.09g
Sodium	0.93g	0.11g
Potassium	1.87g	0.22g
Magnesium	0.14g	0.017g
Vitamin D	365.34 IU	43.00 IU
Vitamin E	127.44 IU	50.00 IU

## CALCULATED METABOLISABLE ENERGY (TOTAL)

Energy\_NRC 2006 (CF) [kcal/100g] 117.70

Essential fatty acids 2.25% - Chloride 0.18% - Sulphur 0.15% - Hydroxyproline 0.05%

## COMPOSITION

Poultry by-products\*\* (chicken 4%), pork by-products\*\*, wheat flour, pork blood products\*\*, sunflower oil refined, corn starch mixture, maize flour, minerals, fish oil, powdercellulose, fructo-oligo-saccharides, marigold extract (source of lutein).

\*\*Protein sources.

## ADDITIVES (KG)\*\*\*

Nutritional additives: Vitamin D3: 390 IU, Iron [3b103]: 6mg, Iodine [3b202]: 0.55mg, Copper [3b405, 3b406]: 4.5mg, Manganese [3b502, 3b503, 3b504]: 1.9mg, Zinc [3b603, 3b605, 3b606]: 19mg - Technological additives: cinnoptilolite of sedimentary origin: 0.2g.

\*\*\*Values reflect only levels added to the formula, not those naturally occurring in components of the diet.



# RENAL WITH FISH



THIN SLICES IN GRAVY

Available in box of 12 pouches of **85g**

## RECOMMENDED DAILY INTAKE & FEEDING DURATION

ADULT CAT	CAT'S WEIGHT (kg)	BODY CONDITION					
		THIN		NORMAL		OVERWEIGHT	
		grams	pouch	grams	pouch	grams	pouch
	<b>1.5</b>	120	1 + 1/2	100	1	80	1
	<b>2</b>	150	2	125	1 + 1/2	100	1
	<b>2.5</b>	175	2	145	1 + 1/2	115	1 + 1/2
	<b>3</b>	200	2 + 1/2	165	2	135	1 + 1/2
	<b>3.5</b>	225	2 + 1/2	185	2	150	2
	<b>4</b>	245	3	205	2 + 1/2	165	2
	<b>4.5</b>	265	3	225	2 + 1/2	180	2
	<b>5</b>	290	3 + 1/2	240	3	190	2
	<b>5.5</b>	310	3 + 1/2	255	3	205	2 + 1/2
	<b>6</b>	330	4	275	3	220	2 + 1/2
	<b>6.5</b>	345	4	290	3 + 1/2	230	2 + 1/2
	<b>7</b>	365	4 + 1/2	305	3 + 1/2	245	3
	<b>7.5</b>	385	4 + 1/2	320	4	255	3
	<b>8</b>	400	4 + 1/2	335	4	270	3
	<b>8.5</b>	42	5	350	4	280	3 + 1/2
	<b>9</b>	435	5	365	4 + 1/2	290	3 + 1/2
	<b>9.5</b>	455	5 + 1/2	380	4 + 1/2	305	3 + 1/2
	<b>10</b>	470	5 + 1/2	395	4 + 1/2	315	3 + 1/2

\*Renal diets are recommended for cats in the advanced stages of CKD (stages 2-4). Early Renal may be suitable for cats in early stage 2, under veterinary recommendation.

In case of food aversion, the cat can be switched to another renal option without transition. On top of a renal blood panel, a mineral blood panel follow up may be recommended: in case hypercalcaemia develops, the cat should be switched to Early Renal diet; other mineral disturbances (eg. hypokalaemia) may require additional treatment.

In most cases, Renal diets may be continued for the cat's lifetime.

# KIDNEY DISORDERS

## RECOMMENDED FOR CASES OF

- Azotaemic Chronic Kidney Disease (IRIS stage 2\* to stage 4)
- Chronic Kidney Disease with proteinuria (IRIS stage 1 to 4)
- Management of calcium oxalate urolith recurrence in cats with impaired renal function
- Prevention of recurrence of urolithiasis requiring urine alkalisation: urate and cystine uroliths

## NOT RECOMMENDED IN CASE OF

- Growth, gestation/lactation



## RENAL SUPPORT

Formulated with low phosphorus and moderate protein of high quality to support renal function.



## ADAPTED ENERGY

Adapted energy content to reduce meal volume and help support a reduced appetite.



## AROMATIC CHOICE

A specific aromatic profile with a dedicated texture, to help stimulate the cats appetite particularly in cases of food aversion.

KEY VALUES	Per 1000Kcal	Per 100g as fed
Moisture	842.11g	80.00g
Protein	69.47g	6.60g
Fat content	63.16g	6.00g
Crude fibre	10.53g	1.00g
Crude ash	11.58g	1.10g
Carbohydrate (NFE)	55.79g	5.30g
Dietary fibre	15.79g	1.50g
Omega 6	14.74g	1.40g
Omega 3	2.74g	0.26g
EPA + DHA	1.31g	0.124g
Calcium	1.47g	0.14g
Phosphorus	0.95g	0.09g
Sodium	0.84g	0.08g
Potassium	1.89g	0.18g
Magnesium	0.17g	0.016g
Vitamin D	347.37 IU	33.00 IU
Vitamin E	136.84 IU	13.00 IU

## CALCULATED METABOLISABLE ENERGY (TOTAL)

Energy\_NRC 2006 (CF) [kcal/100g] 95.00

Essential fatty acids 1.54% - Chloride 0.13% - Sulphur 0.13% - Hydroxyproline 0.05%

## COMPOSITION

Poultry by-products\*\*, pork by-products\*\*, wheat flour, salmon\*\* (4%), powdercellulose, corn starch mixture, pork blood products\*\*, sunflower oil refined, minerals, fish oil, fructo-oligo-saccharides, marigold extract (source of lutein).

\*\*Highly digestible ingredients.

## ADDITIVES (KG)\*\*\*

Nutritional additives: Vitamin D3: 190 IU, Iron [3b103]: 4mg, Iodine [3b202]: 0.36mg, Copper [3b405, 3b406]: 2.9mg, Manganese [3b502, 3b503, 3b504]: 1.4mg, Zinc [3b603, 3b605, 3b606]: 14mg - Technological additives: cinnoptilolite of sedimentary origin: 0.2g.

\*\*\*Values reflect only levels added to the formula, not those naturally occurring in components of the diet.



# RENAL WITH BEEF



THIN SLICES IN GRAVY

Available in box of 12 pouches of 85g

## RECOMMENDED DAILY INTAKE & FEEDING DURATION

ADULT CAT	CAT'S WEIGHT (kg)	BODY CONDITION					
		THIN		NORMAL		OVERWEIGHT	
		grams	pouch	grams	pouch	grams	pouch
1.5	115	1 + 1/2	95	1	75	1	
2	140	1 + 1/2	115	1 + 1/2	95	1	
2.5	165	2	140	1 + 1/2	110	1 + 1/2	
3	190	2	155	2	125	1 + 1/2	
3.5	210	2 + 1/2	175	2	140	1 + 1/2	
4	230	2 + 1/2	190	2	155	2	
4.5	250	3 2	10	2 + 1/2	165	2	
5	270	3	225	2 + 1/2	180	2	
5.5	290	3 + 1/2	240	3	195	2 + 1/2	
6	305	3 + 1/2	255	3	205	2 + 1/2	
6.5	325	4	270	3	215	2 + 1/2	
7	345	4	285	3 + 1/2	230	2 + 1/2	
7.5	360	4	300	3 + 1/2	240	3	
8	375	4 + 1/2	315	3 + 1/2	250	3	
8.5	395	4 + 1/2	330	4	260	3	
9	410	5	340	4	275	3	
9.5	425	5	355	4	285	3 + 1/2	
10	440	5	370	4 + 1/2	295	3 + 1/2	

\*Renal diets are recommended for cats in the advanced stages of CKD (stages 2-4). Early Renal may be suitable for cats in early stage 2, under veterinary recommendation.

In case of food aversion, the cat can be switched to another renal option without transition. On top of a renal blood panel, a mineral blood panel follow up may be recommended: in case hypercalcaemia develops, the cat should be switched to Early Renal diet; other mineral disturbances (eg. hypokalaemia) may require additional treatment.

In most cases, Renal diets may be continued for the cat's lifetime.

# KIDNEY DISORDERS

## RECOMMENDED FOR CASES OF

- Azotaemic Chronic Kidney Disease (IRIS stage 2\* to stage 4)
- Chronic Kidney Disease with proteinuria (IRIS stage 1 to 4)
- Management of calcium oxalate urolith recurrence in cats with impaired renal function
- Prevention of recurrence of urolithiasis requiring urine alkalinisation: urate and cystine uroliths

## NOT RECOMMENDED IN CASE OF

- Growth, gestation/lactation



### RENAL SUPPORT

Formulated with low phosphorus and moderate protein of high quality to support renal function.



### ADAPTED ENERGY

Adapted energy content to reduce meal volume and help support a reduced appetite.



### AROMATIC CHOICE

A specific aromatic profile with a dedicated texture, to help stimulate the cats appetite particularly in cases of food aversion.

## KEY VALUES Per 1000Kcal Per 100g as fed

Moisture	796.81	80.00g
Protein	66.73g	6.70g
Fat content	65.74g	6.60g
Crude fibre	4.98g	0.50g
Crude ash	10.96g	1.10g
Carbohydrate (NFE)	50.80g	5.10g
Dietary fibre	7.97g	0.80g
Omega 6	23.90g	2.40g
Omega 3	2.19g	0.22g
EPA + DHA	1.35g	0.136g
Calcium	1.29g	0.13g
Phosphorus	0.75g	0.075g
Sodium	0.80g	0.08g
Potassium	1.89g	0.19g
Magnesium	0.16g	0.016g
Vitamin D	418.33 IU	42.00 IU
Vitamin E	134.46IU	13.50 IU

## CALCULATED METABOLISABLE ENERGY (TOTAL)

Energy\_NRC 2006 (CF) (kcal/100g) 100.40

Essential fatty acids 2.35% - Chloride 0.14% - Sulphur 0.24% - Hydroxyproline 0.05%.

## COMPOSITION

Poultry by-products\*\*, pork by-products\*\*, beef by-products\*(4%), wheat flour, sunflower oil refined, pork blood products\*\*, maize flour, corn starch mixture, minerals, fish oil, powdercellulose, fructo-oligo-saccharides, caramelised sugars, marigold extract (source of lutein).

\*\*Protein sources.

## ADDITIVES (KG)\*\*\*

Nutritional additives: Vitamin D3: 390 IU, Iron [3b103]: 5mg, Iodine [3b202]: 0.4mg, Copper [3b405, 3b406]: 3.2mg, Manganese [3b502, 3b503, 3b504]: 1.6mg, Zinc [3b603, 3b605, 3b606]: 16mg - Technological additives: clinoptilolite of sedimentary origin: 0.2g.

\*\*\*Values reflect only levels added to the formula, not those naturally occurring in components of the diet.



# RENAL SPECIAL



Available in 400g, 2 and 4kg bags

## RECOMMENDED DAILY INTAKE & FEEDING DURATION

ADULT CAT	CAT'S WEIGHT (kg)	BODY CONDITION					
		THIN		NORMAL		OVERWEIGHT	
		grams	cups	grams	cups	grams	cups
2	39	3/8	32	3/8	26	2/8	
2.5	46	4/8	38	3/8	30	3/8	
3	52	4/8	43	4/8	35	3/8	
3.5	58	5/8	48	4/8	39	3/8	
4	64	5/8	53	4/8	42	4/8	
4.5	69	6/8	58	5/8	46	4/8	
5	74	6/8	62	5/8	50	4/8	
5.5	80	7/8	67	6/8	53	4/8	
6	85	7/8	71	6/8	57	5/8	
6.5	90	1	75	6/8	60	5/8	
7	95	1	79	7/8	63	5/8	
7.5	99	1	83	7/8	66	6/8	
8	104	1 + 1/8	87	7/8	69	6/8	
8.5	109	1 + 1/8	91	1	72	6/8	
9	113	1 + 1/8	94	1	75	6/8	
9.5	118	1 + 2/8	98	1	78	7/8	
10	122	1 + 2/8	102	1 + 1/8	81	7/8	

\*Renal diets are recommended for cats in the advanced stages of CKD (stages 2-4). Early Renal may be suitable for cats in early stage 2, under veterinary recommendation.

In case of food aversion, the cat can be switched to another renal option without transition. On top of a renal blood panel, a mineral blood panel follow up may be recommended: in case hypercalcaemia develops, the cat should be switched to Early Renal diet; other mineral disturbances (eg. hypokalaemia) may require additional treatment.

In most cases, Renal diets may be continued for the cat's lifetime.

# KIDNEY DISORDERS

## RECOMMENDED FOR CASES OF

- Azotaemic Chronic Kidney Disease (IRIS stage 2\* to stage 4)
- Chronic Kidney Disease with proteinuria (IRIS stage 1 to 4)
- Management of calcium oxalate urolith recurrence in cats with impaired renal function
- Prevention of recurrence of urolithiasis requiring urine alkalinisation: urate and cystine uroliths

## NOT RECOMMENDED IN CASE OF

- Growth, gestation/lactation



### RENAL SUPPORT

Formulated with low phosphorus and moderate protein of high quality to support renal function.



### ADAPTED ENERGY

Adapted energy content to reduce meal volume and help support a reduced appetite.



### AROMATIC CHOICE

A specific aromatic profile with a dedicated kibble shape to help stimulate the cat's appetite, particularly in cases of food aversion.

## KEY VALUES Per 1000Kcal Per 100g as fed

Moisture	14.03g	5.50g
Protein	66.34g	26.00g
Fat content	43.38g	17.00g
Crude fibre	12.25g	4.80g
Crude ash	15.82g	6.20g
Carbohydrate (NFE)	103.34g	40.50g
Dietary fibre	27.30g	10.70g
Omega 6	8.32g	3.26g
Omega 3	2.12g	0.83g
EPA + DHA	1.05g	0.41g
Calcium	1.61g	0.63g
Phosphorus	1.15g	0.45g
Sodium	1.02g	0.40g
Potassium	2.30g	0.90g
Magnesium	0.13g	0.05g
Vitamin D	229.65 IU	90.00 IU
Vitamin E	127.58 IU	50.00 IU

## CALCULATED METABOLISABLE ENERGY (TOTAL)

Energy\_NRC 2006 (CF) (kcal/kg) 391.90

Essential Fatty Acids 3.13% - Chloride 0.76% - Sulphur 0.5% - Hydroxyproline 0.86%.

## COMPOSITION

Maize flour, rice, dehydrated pork protein\*\*, animal fats, maize gluten, vegetable fibres, maize, hydrolysed animal proteins, minerals, wheat gluten\*\*, chicory pulp, fish oil, soya oil, mono - and diglycerides of palmitic and stearic acids esterified with citric acid, psyllium husks and seeds, fructo-oligo-saccharides, marigold extract (source of lutein). Protein sources: dehydrated pork protein\*\*, maize gluten, hydrolysed animal proteins, wheat gluten\*\*.

\*\*L.I.P.: protein selected for its very high digestibility.

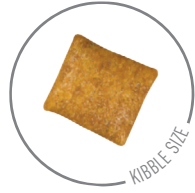
## ADDITIVES (KG)\*\*\*

Nutritional additives: Vitamin A: 22500 IU, Vitamin D3: 800 IU, Iron [3b103]: 47mg, Iodine [3b201, 3b202]: 4.7mg, Copper [3b405, 3b406]: 15mg, Manganese [3b502, 3b504]: 61mg, Zinc [3b603, 3b605, 3b606]: 147mg, Selenium [3b801, 3b811, 3b812]: 0.08mg - Technological additives: Clinoptilolite of sedimentary origin: 10g - Preservatives - Antioxidants.

\*\*\*Values reflect only levels added to the formula, not those naturally occurring in components of the diet.



# RENAL SELECT



Available in  
400g, 2 and  
4kg bags

## RECOMMENDED DAILY INTAKE & FEEDING DURATION

ADULT CAT	CAT'S WEIGHT (kg)	BODY CONDITION					
		THIN		NORMAL		OVERWEIGHT	
		grams	cups	grams	cups	grams	cups
	<b>2</b>	37	3/8	31	2/8	25	2/8
	<b>2.5</b>	43	3/8	36	3/8	29	2/8
	<b>3</b>	49	4/8	41	3/8	33	3/8
	<b>3.5</b>	55	4/8	46	3/8	37	3/8
	<b>4</b>	61	5/8	51	4/8	40	3/8
	<b>4.5</b>	66	5/8	55	4/8	44	3/8
	<b>5</b>	71	5/8	59	4/8	47	4/8
	<b>5.5</b>	76	6/8	64	5/8	51	4/8
	<b>6</b>	81	6/8	68	5/8	54	4/8
	<b>6.5</b>	86	7/8	72	5/8	57	4/8
	<b>7</b>	90	7/8	75	6/8	60	5/8
	<b>7.5</b>	95	7/8	79	6/8	63	5/8
	<b>8</b>	99	1	83	6/8	66	5/8
	<b>8.5</b>	104	1	87	7/8	69	5/8
	<b>9</b>	108	1	90	7/8	72	5/8
	<b>9.5</b>	112	1	94	7/8	75	6/8
	<b>10</b>	116	1 + 1/8	97	7/8	78	6/8

\*Renal diets are recommended for cats in the advanced stages of CKD (stages 2-4). Early Renal may be suitable for cats in early stage 2, under veterinary recommendation.

In case of food aversion, the cat can be switched to another renal option without transition. On top of a renal blood panel, a mineral blood panel follow up may be recommended: in case hypercalcaemia develops, the cat should be switched to Early Renal diet; other mineral disturbances (eg. hypokalaemia) may require additional treatment.

In most cases, Renal diets may be continued for the cat's lifetime.

## KIDNEY DISORDERS

### RECOMMENDED FOR CASES OF

- Azotaemic Chronic Kidney Disease (IRIS stage 2\* to stage 4)
- Chronic Kidney Disease with proteinuria (IRIS stage 1 to 4)
- Management of calcium oxalate urolith recurrence in cats with impaired renal function
- Prevention of recurrence of urolithiasis requiring urine alkalinisation: urate and cystine uroliths

### NOT RECOMMENDED IN CASE OF

- Growth, gestation/lactation



### RENAL SUPPORT

Formulated with low phosphorus and moderate protein of high quality to support renal function.



### ADAPTED ENERGY

Adapted energy content to reduce meal volume and help support a reduced appetite.



### APPETITE STIMULATION

A specific aromatic profile with a dedicated kibble texture and shape to help stimulate the cat's appetite, particularly in cases of food aversion.

KEY VALUES	Per 1000Kcal	Per 100g as fed
Moisture	13.40g	5.50g
Protein	59.68g	24.50g
Fat content	52.38g	21.50g
Crude fibre	11.21g	4.60g
Crude ash	16.08g	6.60g
Carbohydrate [NFE]	90.86g	37.30g
Dietary fibre	23.63g	9.70g
Omega 6	8.79g	3.61g
Omega 3	2.12g	0.87g
EPA + DHA	1.00g	0.41g
Calcium	1.71g	0.70g
Phosphorus	1.00g	0.41g
Sodium	1.10g	0.45g
Potassium	2.19g	0.90g
Magnesium	0.19g	0.08g
Vitamin D	219.24 IU	90.00 IU
Vitamin E	121.80 IU	50.00 IU

### CALCULATED METABOLISABLE ENERGY (TOTAL)

Energy\_NRC 2006 [CF] (kcal/kg) 410.50

Essential fatty acids 3.51% - Chloride 0.94% - Sulphur 0.4% - Hydroxyproline 0.42%

### COMPOSITION

Animal fats, rice, precooked wheat flour, dehydrated pork protein\*\*, wheat flour, wheat gluten\*\*, vegetable fibres, maize gluten, hydrolysed animal proteins, dehydrated fish, minerals, chicory pulp, fish oil, soya oil, mono- and diglycerides of palmitic and stearic acids esterified with citric acid, psyllium husks and seeds, fructo-oligosaccharides, marigold extract (source of lutein). Protein sources: dehydrated pork protein\*\*, wheat gluten\*\*, maize gluten, hydrolysed animal proteins.

\*\*L.I.P.: protein selected for its very high digestibility.

### ADDITIVES (KG)\*\*\*

Nutritional additives: Vitamin A: 21000 IU, Vitamin D3: 800 IU, Iron [3b103]: 45mg, Iodine [3b201, 3b202]: 4.5mg, Copper [3b405, 3b406]: 14mg, Manganese [3b502, 3b504]: 58mg, Zinc [3b603, 3b605, 3b606]: 148mg, Selenium [3b801, 3b811, 3b812]: 0.08mg - Technological additives: Clinoptilolite of sedimentary origin: 10g - Preservatives - Antioxidants.

\*\*\*Values reflect only levels added to the formula, not those naturally occurring in components of the diet.

# RENAL LIQUID



Available in pack of  
3 x 200ml bottles

## RECOMMENDED DAILY INTAKE & FEEDING DURATION

ADULT CAT	ENERGY LEVEL: CONVALESCING CAT CONFINED IN A CAGE	
	CATS WEIGHT (Kg)	LIQUID (ml)
	<b>2</b>	109
<b>2.5</b>	129	
<b>3</b>	148	
<b>3.5</b>	166	
<b>4</b>	183	
<b>4.5</b>	200	
<b>5</b>	217	
<b>6</b>	248	
<b>7</b>	279	
<b>8</b>	308	
<b>9</b>	337	
<b>10</b>	364	

**CATS CONFINED IN A KENNEL** It is advised to meet the Resting Energy Requirements (R.E.R) according to the formula: **RER (in kcal/day) = 70x (body weight in kg)<sup>0.75</sup>** The amount of food should be reevaluated according to the clinical evolution of the pet.

In case of anorexia, a **refeeding schedule** is strongly recommended:

- **If anorexic for < 3 days:** plan to meet the requirements in 3 days.

Day 1: 1/3 of requirements,  
day 2: 2/3 of requirements,  
day 3: Full requirements.

- **If anorexic for ≥ 3 days:** plan to meet the requirements in 5 days.

Day 1: 1/4 of requirements,  
day 2: 1/2 of requirements,  
day 3: 2/3 of requirements,  
day 4: 3/4 of requirements,  
day 5: Full requirements.

It is recommended to divide the daily intake into several small meals.

## CONVALESCENCE PERIOD

### RECOMMENDED FOR TUBE-FEEDING IN CASES OF

- Acute Kidney Injury (AKI)
- Azotaemic Chronic Kidney Disease (IRIS stage 2 to stage 4)
- Hepatic encephalopathy
- Chronic Kidney Disease with proteinuria (IRIS stage 1 to 4)

### NOT RECOMMENDED IN CASE OF

- Growth, gestation/lactation



### RENAL DIETARY MANAGEMENT

Formulated to support renal function in case of renal insufficiency: high quality proteins and restricted levels of phosphorus. Contains EPA + DHA and antioxidants.



### ADAPTED ENERGY

High energy density that provides daily energy requirements in a reduced feeding volume.



### COMPLETE NUTRITION

Complete and balanced liquid diet to support the renal function in case of renal insufficiency, for cats requiring assisted enteral nutrition.



### ANTIOXIDANT COMPLEX

The synergistic antioxidant complex (including high levels of Vit E, Vit C, taurine and lutein) helps neutralise free radicals.



### EASY TUBE FEEDING

Liquid formula with adapted viscosity for an easy use whatever the tube size.

KEY VALUES	Per 1000Kcal	Per 100ml as fed
Moisture	862.07g	85.00g
Protein	70.99g	7.00g
Fat content	55.78g	5.50g
Crude ash	9.13g	0.90g
Carbohydrate [NFE]	66.94g	6.60g
Omega 6	7.40g	0.73g
Omega 3	3.04g	0.30g
EPA + DHA	1.42g	0.14g
Calcium	1.01g	0.10g
Phosphorus	0.81g	0.08g
Sodium	0.81g	0.08g
Potassium	2.03g	0.20g
Magnesium	0.12g	0.012g
Vitamin D	324.54 IU	32.00 IU
Vitamin E	172.41 IU	17.00 IU

### CALCULATED METABOLISABLE ENERGY (TOTAL)

Energy\_NRC 2006 [kcal/1000ml] 98.6

Note: Metabolisable energy used for claim: 108 kcal/100 ml [Calculated according to NRC2006-TDF].

### COMPOSITION

Milk low lactose\*\*, maltodextrin\*, vegetable oil\* (including oil rich in arachidonic acid), calcium caseinate\*, soya protein concentrate\*\*, minerals, fish oil\*, mono and diglyceride of fatty acids, marigold extract (source of lutein).

\*Highly digestible ingredients.

### ADDITIVES (per l)\*\*\*

Nutritional additives: Vitamin A: 33300 IU, Vitamin D3: 320 IU, E1 (Iron): 30 mg, E2 (Iodine): 0.3 mg, E4 (Copper): 1.8 mg, E5 (Manganese): 2.4 mg, E6 (Zinc): 28 mg, E8 (Selenium): 0.15 mg.

\*\*\*Values reflect only levels added to the formula, not those naturally occurring in components of the diet.





# MULTIFUNCTION RENAL HYPOALLERGENIC



Available in  
2kg bag

## RECOMMENDED DAILY INTAKE & FEEDING DURATION

ADULT CAT	CAT'S WEIGHT (kg)	BODY CONDITION					
		THIN		NORMAL		OVERWEIGHT	
		grams	cups	grams	cups	grams	cups
	<b>2</b>	37	3/8	31	2/8	25	2/8
	<b>2.5</b>	43	3/8	36	3/8	29	2/8
	<b>3</b>	50	4/8	41	3/8	33	3/8
	<b>3.5</b>	55	4/8	46	4/8	37	3/8
	<b>4</b>	61	5/8	51	4/8	41	3/8
	<b>4.5</b>	66	5/8	55	4/8	44	3/8
	<b>5</b>	71	6/8	59	5/8	47	4/8
	<b>5.5</b>	76	6/8	64	5/8	51	4/8
	<b>6</b>	81	6/8	68	5/8	54	4/8
	<b>6.5</b>	86	7/8	72	6/8	57	5/8
	<b>7</b>	90	7/8	75	6/8	60	5/8
	<b>7.5</b>	95	1	79	6/8	63	5/8
	<b>8</b>	99	1	83	7/8	66	5/8
	<b>8.5</b>	104	1	87	7/8	69	5/8
	<b>9</b>	108	1 + 1/8	90	7/8	72	6/8
	<b>9.5</b>	112	1 + 1/8	94	7/8	75	6/8
	<b>10</b>	117	1 + 1/8	97	1	78	6/8

\*For nutritional management of cats with Chronic Kidney Disease (stage 2-4) and Adverse Food Reaction. Initially feed the diet for 3-8 weeks and re-evaluate based on clinical assessment of the response. When a food allergy or a food intolerance is suspected, the cat's diet should be changed following classical food transition. Renal + Hypoallergenic can be fed for the cat's lifetime. It is recommended to divide the daily intake into 2 meals.

## RECOMMENDED FOR CASES OF

### Renal disease

- Azotaemic Chronic Kidney Disease (IRIS stage 2\* to stage 4)
- Chronic Kidney Disease with proteinuria (IRIS stage 1 to 4)
- **+ Dermatological/GI conditions:**
  - Food elimination trial
  - Food allergies
  - Food intolerance
  - Inflammatory Bowel Disease (IBD)
  - Chronic diarrhoea
  - Exocrine Pancreatic Insufficiency (EPI)
  - Small Intestinal Bacterial Overgrowth (SIBO)

### NOT RECOMMENDED IN CASE OF

- Growth, gestation/lactation



### RENAL SUPPORT

Formulated with low phosphorus and moderate protein of high quality to support renal function.



### ADAPTED ENERGY

Adapted energy content to reduce meal volume and help support a reduced appetite.



### HYDROLYSED PROTEIN

Hydrolysed soya protein isolate with a low molecular weight for very low allergenicity.



### SKIN BARRIER

A specially formulated complex of nutrients to support the skin's natural protective barrier role and for optimal skin health.



### KEY VALUES

	Per 1000Kcal	Per 100g as fed
Moisture	13.41g	5.50g
Protein	63.38g	26.00g
Fat content	48.76g	20.00g
Crude fibre	10.00g	4.10g
Crude ash	13.90g	5.70g
Carbohydrate (NFE)	94.34g	38.70g
Dietary fibre	23.16g	9.50g
Omega 6	12.87g	5.28g
Omega 3	2.63g	1.08g
EPA + DHA	0.98g	0.40g
Calcium	1.46g	0.60g
Phosphorus	0.98g	0.40g
Sodium	0.85g	0.35g
Potassium	2.19g	0.90g
Magnesium	0.10g	0.04g
Copper	3.66mg	1.50mg
Zinc	41.44mg	17.00mg
Vitamin A	9019.99 IU	3700 IU
Vitamin E	158.46 IU	65 IUU

### CALCULATED METABOLISABLE ENERGY (TOTAL)

Energy\_NRC 2006 (CF) (kcal/kg) 410.20

Essential fatty acids 5%.

### COMPOSITION

Rice, hydrolysed soya protein concentrate\*\*, animal fats, chicory pulp, hydrolysed poultry liver, vegetable fibres, minerals, soya oil, fish oil, fructo-oligo-saccharides, borage oil, marigold extract (source of lutein). Carbohydrate source: rice. Protein sources: hydrolysed soya protein isolate, hydrolysed poultry liver.

\*\*L.I.P.: protein selected for its very high digestibility.

### ADDITIVES (KG)\*\*\*

Nutritional additives: Vitamin A: 34 000 IU, Vitamin D3: 800 IU, Iron (3b103): 39mg, Iodine (3b201, 3b202): 3.5mg, Copper (3b405, 3b406): 15mg, Manganese (3b502, 3b504): 52mg, Zinc (3b603, 3b605, 3b606): 152mg, Selenium (3b801, 3b811, 3b812): 0.24mg - Technological additives: Clinoptilolite of sedimentary origin: 5g - Preservatives - Antioxidants.

\*\*\*Values reflect only levels added to the formula, not those naturally occurring in components of the diet.

# MOBILITY



Available in  
2kg bag

## RECOMMENDED DAILY INTAKE & FEEDING DURATION

ADULT CAT	CAT'S WEIGHT (kg)	BODY CONDITION					
		THIN		NORMAL		OVERWEIGHT	
		grams	cups	grams	cups	grams	cups
	<b>2</b>	39	3/8	33	3/8	26	2/8
	<b>2.5</b>	46	4/8	39	3/8	31	3/8
	<b>3</b>	53	4/8	44	4/8	35	3/8
	<b>3.5</b>	59	5/8	49	4/8	39	3/8
	<b>4</b>	65	5/8	54	5/8	43	4/8
	<b>4.5</b>	70	6/8	59	5/8	47	4/8
	<b>5</b>	76	6/8	63	5/8	50	4/8
	<b>5.5</b>	81	7/8	68	6/8	54	5/8
	<b>6</b>	86	7/8	72	6/8	57	5/8
	<b>6.5</b>	91	1	76	6/8	61	5/8
	<b>7</b>	96	1	80	7/8	64	5/8
	<b>7.5</b>	101	1	84	7/8	67	6/8
	<b>8</b>	106	1 + 1/8	88	7/8	71	6/8
	<b>8.5</b>	110	1 + 1/8	92	1	74	6/8
	<b>9</b>	115	1 + 2/8	96	1	77	6/8
	<b>9.5</b>	120	1 + 2/8	100	1	80	7/8
	<b>10</b>	124	1 + 2/8	103	1 + 1/8	83	7/8

Mobility diet can be fed for the cat's lifetime. It is recommended to divide the daily intake into 2 meals.



This diet is formulated to promote a healthy urinary environment.

## SUPPORT HEALTHY JOINT FUNCTION

### RECOMMENDED FOR CASES OF

- Help support healthy joint function
- Help support joints after orthopaedic surgery or trauma

### NOT RECOMMENDED IN CASE OF

- Growth, gestation/lactation



### MOBILITY SUPPORT

Scientifically proven to support mobility in cats.



### JOINT COMPLEX

New Zealand Green Lipped Mussel extract and high EPA+DHA content to help support healthy joint function.



### ANTIOXIDANT COMPLEX

Enriched with a blend of antioxidants to help neutralise free radicals.

### KEY VALUES

	Per 1000Kcal	Per 100g as fed
Moisture	14.26g	5.50g
Protein	72.61g	28.00g
Fat content	38.90g	15.00g
Crude fibre	12.45g	4.80g
Crude ash	15.04g	5.80g
Carbohydrate (NFE)	106.07g	40.90g
Dietary fibre	29.30g	11.30g
Omega 6	9.39g	3.62g
Omega 3	3.58g	1.38g
EPA + DHA	2.07g	0.80g
Glucosamine + Chondroitin	259.34mg	100.00mg
Calcium	1.92g	0.74g
Phosphorus	1.56g	0.60g
Sodium	1.04g	0.40g
Magnesium	0.13g	0.05g
Vitamin E	129.67 IU	30.00 IU

### CALCULATED METABOLISABLE ENERGY (TOTAL)

Energy\_NRC 2006 (CF) (kcal/kg) 385.60

### COMPOSITION

Maize flour, wheat gluten\*, maize, rice, dehydrated poultry protein, animal fats, vegetable fibres, maize gluten, hydrolysed animal proteins, fish oil, minerals, soya oil, chicory pulp, psyllium husks and seeds, fructo-oligo-saccharides, New Zealand green-lipped mussel extract (GLM) [0.3%], hydrolysed yeast (source of Mannan-oligo-saccharides), glucosamine from fermentation, marigold extract (source of lutein), hydrolysed cartilage (source of chondroitin).

\*L.I.P.: protein selected for its very high digestibility.

### ADDITIVES (KG)\*\*

Nutritional additives: Vitamin A: 20500 IU, Vitamin D3: 700 IU, Iron (3b103): 48mg, Iodine (3b201, 3b202): 4.8mg, Copper (3b405, 3b406): 15mg, Manganese (3b502, 3b504): 63mg, Zinc (3b603, 3b605, 3b606): 141mg, Selenium (3b801, 3b811, 3b812): 0.09mg - Preservatives - Antioxidants.

\*\*Values reflect only levels added to the formula, not those naturally occurring in components of the diet.

# CATS MIX FEEDING GUIDELINES



24H

## MIX: EARLY RENAL CAT DRY + EARLY RENAL CAT THIN SLICES IN GRAVY

85g POUCH

CAT'S WEIGHT (kg)	POUCH	BODY CONDITION					
		THIN		NORMAL		OVERWEIGHT	
		DRY (g)	DRY (cup)	DRY (g)	DRY (cup)	DRY (g)	DRY (cup)
2	1/2+	28	3/8	22	2/8	15	1/8
2.5	1+	24	2/8	16	2/8	8	1/8
3	1+	30	3/8	21	2/8	12	1/8
3.5	1+	36	4/8	26	3/8	17	2/8
4	1+	42	4/8	31	3/8	20	2/8
4.5	1+	48	5/8	36	4/8	24	2/8
5	1+	54	5/8	41	4/8	28	3/8
5.5	1+	59	6/8	45	4/8	32	3/8
6	1+	64	6/8	50	5/8	35	3/8
6.5	1+	69	7/8	54	5/8	38	4/8
7	1+	74	7/8	58	6/8	42	4/8
7.5	1+	79	1	62	6/8	45	4/8
8	1+	84	1	66	6/8	48	5/8
8.5	1+	89	1 + 1/8	70	7/8	51	5/8
9	1+	93	1 + 1/8	74	7/8	54	5/8
9.5	1+	98	1 + 2/8	78	1	58	6/8
10	1+	102	1 + 2/8	82	1	61	6/8



24H

## MIX: RENAL CAT DRY+ RENAL WITH CHICKEN CAT THIN SLICES IN GRAVY

85g POUCH

CAT'S WEIGHT (kg)	POUCH	BODY CONDITION					
		THIN		NORMAL		OVERWEIGHT	
		DRY (g)	DRY (cup)	DRY (g)	DRY (cup)	DRY (g)	DRY (cup)
2	1/2+	25	2/8	19	2/8	12	1/8
2.5	1/2+	32	3/8	24	2/8	17	1/8
3	1+	24	2/8	16	1/8	7	1/8
3.5	1+	30	3/8	21	2/8	11	1/8
4	1+	36	3/8	25	2/8	15	1/8
4.5	1+	42	3/8	30	3/8	19	2/8
5	1+	47	4/8	35	3/8	22	2/8
5.5	1+	52	4/8	39	3/8	26	2/8
6	1+	57	5/8	43	4/8	29	2/8
6.5	1+	62	5/8	47	4/8	32	3/8
7	1+	67	6/8	51	4/8	36	3/8
7.5	1+	72	6/8	55	5/8	39	3/8
8	1+	76	6/8	59	5/8	42	3/8
8.5	1+	81	7/8	63	5/8	45	4/8
9	1+	86	7/8	67	6/8	48	4/8
9.5	1+	90	1	71	6/8	51	4/8
10	1+	94	1	74	6/8	54	4/8



24H

## MIX: RENAL CAT DRY+ RENAL CAT LOAF

85g POUCH

CAT'S WEIGHT (kg)	POUCH	BODY CONDITION					
		THIN		NORMAL		OVERWEIGHT	
		DRY (g)	DRY (cup)	DRY (g)	DRY (cup)	DRY (g)	DRY (cup)
2	1/2+	27	2/8	21	2/8	14	1/8
2.5	1/2+	34	3/8	26	2/8	19	2/8
3	1+	28	2/8	20	2/8	11	1/8
3.5	1+	34	3/8	25	2/8	15	1/8
4	1+	40	3/8	30	2/8	19	2/8
4.5	1+	46	4/8	34	3/8	23	2/8
5	1+	51	4/8	39	3/8	26	2/8
5.5	1+	56	5/8	43	4/8	30	2/8
6	1+	61	5/8	47	4/8	33	3/8
6.5	1+	66	6/8	51	4/8	36	3/8
7	1+	71	6/8	55	5/8	40	3/8
7.5	1+	76	6/8	59	5/8	43	4/8
8	1+	81	7/8	63	5/8	46	4/8
8.5	1+	85	7/8	67	6/8	49	4/8
9	1+	90	7/8	71	6/8	52	4/8
9.5	1+	94	1	75	6/8	55	5/8
10	1+	98	1	78	7/8	58	5/8



24H

## MIX: RENAL CAT DRY+ RENAL WITH BEEF CAT THIN SLICES IN GRAVY

85g POUCH




CAT'S WEIGHT (kg)	POUCH	BODY CONDITION					
		THIN		NORMAL		OVERWEIGHT	
		DRY (g)	DRY (cup)	DRY (g)	DRY (cup)	DRY (g)	DRY (cup)
2	1/2+	27	2/8	21	2/8	14	1/8
2.5	1/2+	34	3/8	26	2/8	19	2/8
3	1+	28	2/8	20	2/8	11	1/8
3.5	1+	34	3/8	25	2/8	15	1/8
4	1+	40	3/8	30	2/8	19	2/8
4.5	1+	46	4/8	34	3/8	23	2/8
5	1+	51	4/8	39	3/8	26	2/8
5.5	1+	56	5/8	43	4/8	30	2/8
6	1+	61	5/8	47	4/8	33	3/8
6.5	1+	66	6/8	51	4/8	36	3/8
7	1+	71	6/8	55	5/8	40	3/8
7.5	1+	76	6/8	59	5/8	43	4/8
8	1+	81	7/8	63	5/8	46	4/8
8.5	1+	85	7/8	67	6/8	49	4/8
9	1+	90	7/8	71	6/8	52	4/8
9.5	1+	94	1	75	6/8	55	5/8
10	1+	98	1	78	7/8	58	5/8





**MIX: RENAL CAT DRY\*+  
RENAL WITH FISH CAT THIN SLICES IN GRAVY**

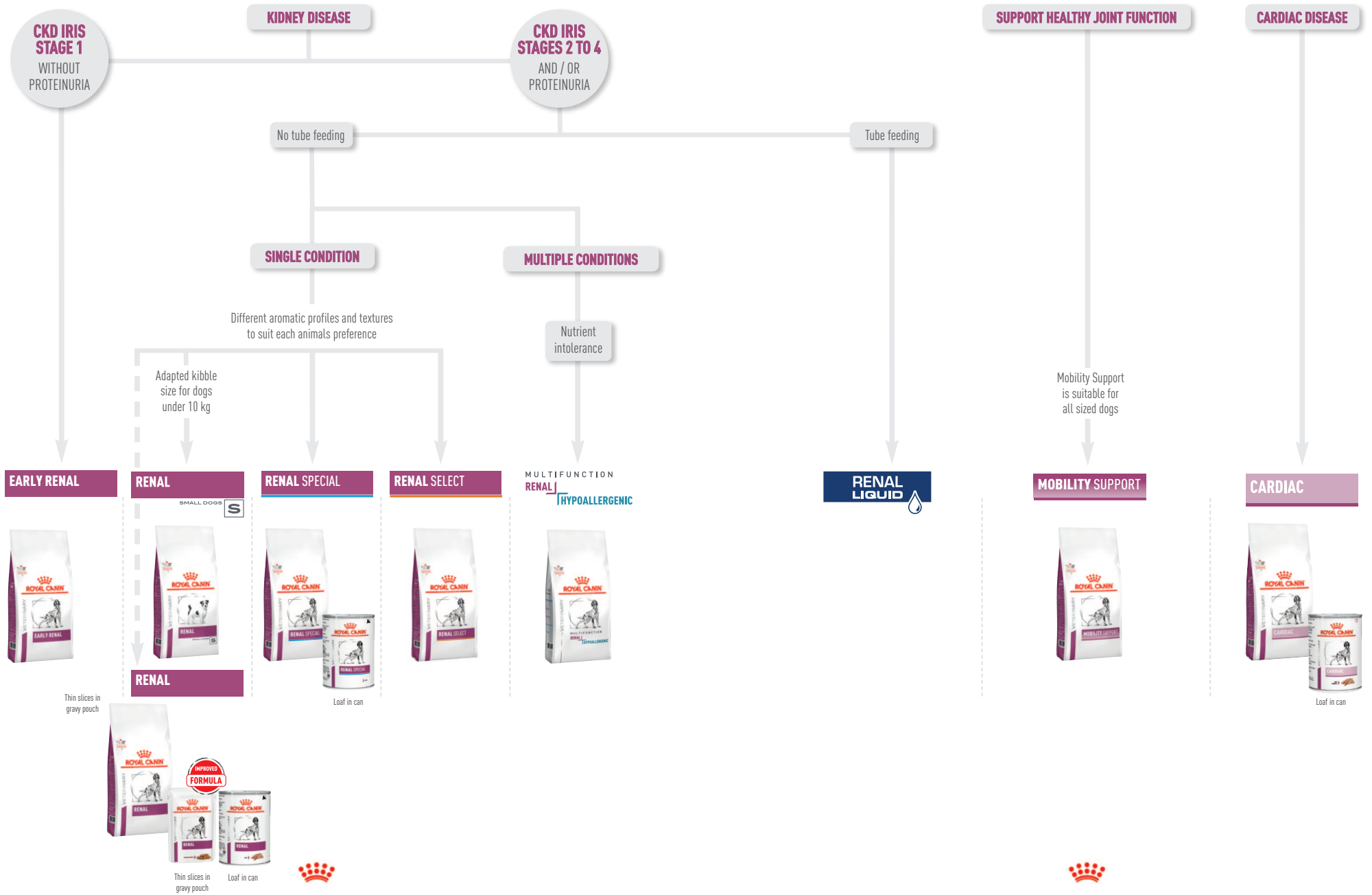
**85g POUCH**

CAT'S WEIGHT (kg)	POUCH	BODY CONDITION					
		 THIN		 NORMAL		 OVERWEIGHT	
		DRY (g)	DRY (cup)	DRY (g)	DRY (cup)	DRY (g)	DRY (cup)
2	1/2+	28	2/8	21	2/8	15	1/8
2.5	1/2+	34	3/8	27	2/8	19	2/8
3	1+	30	2/8	21	2/8	13	1/8
3.5	1+	36	3/8	26	2/8	17	1/8
4	1+	42	3/8	31	3/8	20	2/8
4.5	1+	47	4/8	36	3/8	24	2/8
5	1+	52	4/8	40	3/8	28	2/8
5.5	1+	58	5/8	45	4/8	31	3/8
6	1+	63	5/8	49	4/8	35	3/8
6.5	1+	68	6/8	53	4/8	38	3/8
7	1+	73	6/8	57	5/8	41	3/8
7.5	1+	77	6/8	61	5/8	44	4/8
8	1+	82	7/8	65	5/8	47	4/8
8.5	1+	87	7/8	69	6/8	50	4/8
9	1+	91	1	72	6/8	53	4/8
9.5	1+	96	1	76	6/8	56	5/8
10	1+	100	1	80	7/8	59	5/8

\* All **RENAL** cat dry diets can be considered (the metabolisable energy levels of the three diets **RENAL**, **RENAL SPECIAL** and **RENAL SELECT** are similar). Calculations here are based on **RENAL** metabolisable energy. Calculations here can be used for **RENAL SPECIAL**. Up to a 5% g/day kibble reduction may be required for **RENAL SELECT**.



# CANINE NUTRITIONAL MANAGEMENT DECISION TREE



# EARLY RENAL



Available in  
2, 7 and  
14kg bags

## RECOMMENDED DAILY INTAKE & FEEDING DURATION

ADULT DOG	DOG'S WEIGHT (kg)	BODY CONDITION					
		THIN		NORMAL		OVERWEIGHT	
		grams	cups	grams	cups	grams	cups
	2	53	5/8	47	4/8	40	4/8
	4	90	1 + 1/8	79	1	68	6/8
	6	121	1 + 4/8	107	1 + 2/8	92	1 + 1/8
	8	151	1 + 6/8	133	1 + 5/8	114	1 + 3/8
	10	178	2 + 1/8	157	1 + 7/8	135	1 + 5/8
	15	241	2 + 7/8	212	2 + 4/8	183	2 + 1/8
	20	299	3 + 4/8	263	3 + 1/8	228	2 + 6/8
	25	354	4 + 2/8	311	3 + 6/8	269	3 + 2/8
	30	406	4 + 7/8	357	4 + 2/8	308	3 + 5/8
	35	455	5 + 3/8	401	4 + 6/8	346	4 + 1/8
	40	503	6	443	5 + 2/8	383	4 + 4/8
	45	550	6 + 4/8	484	5 + 6/8	418	5
	50	595	7 + 1/8	524	6 + 2/8	452	5 + 3/8
	55	639	7 + 5/8	563	6 + 6/8	486	5 + 6/8
	60	682	8 + 1/8	601	7 + 1/8	519	6 + 1/8
	70	766	9 + 1/8	674	8	582	6 + 7/8
	80	847	10 + 1/8	745	8 + 7/8	644	7 + 5/8

\*Early Renal diet is recommended for dogs in the early stages of CKD, without proteinuria [stage 1]. If proteinuria is present or they are in stage 2-4, then Renal diet is indicated.

## KIDNEY DISORDERS

### RECOMMENDED FOR CASES OF

- Early Chronic Kidney Disease without proteinuria (IRIS stage 1\*)

### NOT RECOMMENDED IN CASE OF

- Growth, gestation/lactation
- Pancreatitis



### EARLY RENAL SUPPORT

Formulated with moderate phosphorus, EPA+DHA and antioxidant complex to support the kidneys in the early stages of chronic renal insufficiency.



### EPA+DHA

EPA+DHA are long chain omega-3 fatty acids that help support renal function.



### ANTIOXIDANT COMPLEX

Enriched with a blend of antioxidants to help neutralise free radicals.

KEY VALUES	Per 1000Kcal	Per 100g as fed
Moisture	24.06g	9.50g
Protein	56.98g	22.50g
Fat content	40.52g	16.00g
Crude fibre	3.80g	1.50g
Crude ash	12.91g	5.10g
Carbohydrate (NFE)	114.97g	45.40g
Dietary fibre	17.98g	7.10g
Omega 6	7.39g	2.92g
Omega 3	2.18g	0.86g
EPA + DHA	1.27g	0.50g
Calcium	2.03g	0.80g
Phosphorus	1.27g	0.50g
Sodium	0.89g	0.35g
Potassium	1.52g	0.60g
Magnesium	0.41g	0.16g
Vitamin E	121.55 IU	48.00 IU

### CALCULATED METABOLISABLE ENERGY (TOTAL)

Energy\_NRC 2006 (CF) (kcal/kg) 394.90

### COMPOSITION

Maize, dehydrated poultry protein, wheat flour, rice, wheat, animal fats, maize gluten, hydrolysed animal proteins, beet pulp, wheat gluten\*\*, fish oil, minerals, soya oil, butyric acid salt, fructo-oligo-saccharides, marigold extract [source of lutein]. Protein sources: dehydrated poultry protein, maize gluten, hydrolysed animal proteins, wheat gluten\*\*.

\*\*L.I.P.: protein selected for its very high digestibility.

### ADDITIVES (KG)\*\*\*

Nutritional additives: Vitamin A: 15500 IU, Vitamin D3: 1000 IU, Iron [3b103]: 58mg, Iodine [3b201, 3b202]: 4.8mg, Copper [3b405, 3b406]: 12mg, Manganese [3b502, 3b504]: 60mg, Zinc [3b603, 3b605, 3b606]: 136mg, Selenium [3b801, 3b811, 3b812]: 0.14mg - Technological additives: Clinoptilolite of sedimentary origin: 5g - Preservatives - Antioxidants.

\*\*\*Values reflect only levels added to the formula, not those naturally occurring in components of the diet.



# EARLY RENAL



THIN SLICES IN GRAVY

Available in box  
of 12 pouches  
of 100g

## RECOMMENDED DAILY INTAKE & FEEDING DURATION

ADULT DOG	DOG'S WEIGHT (kg)	BODY CONDITION					
		THIN		NORMAL		OVERWEIGHT	
		grams	pouch	grams	pouch	grams	pouch
	2	212	2	186	2	161	1 + 1/2
	4	356	3 + 1/2	314	3	271	2 + 1/2
	6	483	5	425	4 + 1/2	367	3 + 1/2
	8	599	6	527	5 + 1/2	456	4 + 1/2
	10	709	7	624	6	539	5 + 1/2
	15	960	9 + 1/2	845	8 + 1/2	730	7 + 1/2
	20	1192	12	1049	10 + 1/2	906	9
	25	1409	14	1240	12 + 1/2	1071	10 + 1/2
	30	1615	16	1421	14	1228	12 + 1/2
	35	1813	18	1596	16	1378	14
	40	2004	20	1764	17 + 1/2	1523	15
	45	2189	22	1927	19 + 1/2	1664	16 + 1/2
	50	2369	23 + 1/2	2085	21	1801	18
	55	2545	25 + 1/2	2240	22 + 1/2	1934	19 + 1/2
	60	2717	27	2391	24	2065	20 + 1/2
	70	3049	30 + 1/2	2684	27	2318	23
	80	3371	33 + 1/2	2966	29 + 1/2	2562	25 + 1/2

\*Early Renal diet is recommended for dogs in the early stages of CKD, without proteinuria [stage 1]. If proteinuria is present or they are in stage 2-4, then Renal diet is indicated.

## KIDNEY DISORDERS

### RECOMMENDED FOR CASES OF

- Early Chronic Kidney Disease without proteinuria (IRIS stage 1\*)

### NOT RECOMMENDED IN CASE OF

- Growth, gestation/lactation
- Pancreatitis



### EARLY RENAL SUPPORT

Formulated with moderate phosphorus, EPA+DHA and antioxidant complex to support the kidneys in the early stages of chronic renal insufficiency.



### EPA+DHA

EPA+DHA are long chain omega-3 fatty acids that help support renal function.



### ANTIOXIDANT COMPLEX

Enriched with a blend of antioxidants to help neutralise free radicals.

KEY VALUES	Per 1000Kcal	Per 100g as fed
Moisture	838.57g	80.00g
Protein	57.65g	5.50g
Fat content	62.89g	6.00g
Crude fibre	7.34g	0.70g
Crude ash	13.63g	1.30g
Carbohydrate (NFE)	68.13g	6.50g
Dietary fibre	15.72g	1.50g
Omega 6	12.58g	1.20g
Omega 3	2.10g	0.20g
EPA + DHA	1.05g	0.10g
Calcium	1.78g	0.17g
Phosphorus	1.36g	0.13g
Sodium	0.94g	0.09g
Potassium	1.78g	0.17g
Magnesium	0.24g	0.023g
Vitamin E	209.64 IU	20.00 IU

### CALCULATED METABOLISABLE ENERGY (TOTAL)

Energy\_NRC 2006 (TDF) (kcal/100g) 95.40

Essential Fatty acid: 1.3 %.

### COMPOSITION

Poultry by-products\*\*, chicken meat\*\*, maize flour, wheat flour, pork by-products\*\*, pork blood products\*\*, powdercellulose, corn starch mixture, dried beet pulp, crude lecithins, minerals, sunflower oil refined, fish oil, fructo-oligo-saccharides, marigold extract [source of lutein].

\*\*Protein sources.

### ADDITIVES (KG)\*\*\*

Nutritional additives: Vitamin D3: 250 IU, Iron [3b103]: 9mg, Iodine [3b202]: 0.34mg, Copper [3b405, 3b406]: 2.7mg, Manganese [3b502, 3b503, 3b504]: 2.8mg, Zinc [3b603, 3b605, 3b606]: 28mg - Technological additives: clinoptilolite of sedimentary origin: 0.4g.

\*\*\*Values reflect only levels added to the formula, not those naturally occurring in components of the diet.



# RENAL



Available in  
2, 7 and  
14kg bags

## RECOMMENDED DAILY INTAKE & FEEDING DURATION

ADULT DOG	DOG'S WEIGHT (kg)	BODY CONDITION					
		THIN		NORMAL		OVERWEIGHT	
		grams	cups	grams	cups	grams	cups
	<b>2</b>	53	5/8	46	4/8	40	4/8
	<b>4</b>	89	1	78	7/8	67	6/8
	<b>6</b>	120	1 + 3/8	106	1 + 1/8	91	1
	<b>8</b>	149	1 + 5/8	131	1 + 3/8	113	1 + 2/8
	<b>10</b>	176	1 + 7/8	155	1 + 6/8	134	1 + 4/8
	<b>15</b>	239	2 + 5/8	210	2 + 2/8	182	2
	<b>20</b>	297	3 + 2/8	261	2 + 7/8	226	2 + 4/8
	<b>25</b>	351	3 + 7/8	309	3 + 3/8	267	2 + 7/8
	<b>30</b>	402	4 + 3/8	354	3 + 7/8	306	3 + 3/8
	<b>35</b>	451	5	397	4 + 3/8	343	3 + 6/8
	<b>40</b>	499	5 + 4/8	439	4 + 7/8	379	4 + 1/8
	<b>45</b>	545	6	480	5 + 2/8	414	4 + 4/8
	<b>50</b>	590	6 + 4/8	519	5 + 6/8	448	4 + 7/8
	<b>55</b>	634	7	558	6 + 1/8	482	5 + 2/8
	<b>60</b>	676	7 + 3/8	595	6 + 4/8	514	5 + 5/8
	<b>65</b>	718	7 + 7/8	632	6 + 7/8	546	6
	<b>70</b>	759	8 + 3/8	668	7 + 3/8	577	6 + 3/8
	<b>80</b>	839	9 + 2/8	739	8 + 1/8	638	7

\*Renal diets are recommended for dogs in the advanced stages of CKD (stages 2-4). Early Renal may be suitable for dogs in early stage 2, under veterinary recommendation. In case of food aversion, the dog can be switched to another renal option without transition.

Renal diets may be continued for the dog's lifetime.

## KIDNEY DISORDERS

### RECOMMENDED FOR CASES OF

- Azotaemic Chronic Kidney Disease (IRIS stage 2\* to stage 4)
- Chronic Kidney Disease with proteinuria (IRIS stage 1 to 4)

### NOT RECOMMENDED IN CASE OF

- Growth, gestation/lactation
- Pancreatitis



### RENAL SUPPORT

Formulated with low phosphorus and moderate protein of high quality to support renal function.



### ADAPTED ENERGY

Adapted energy content to reduce meal volume and help support a reduced appetite.



### AROMATIC CHOICE

A specific aromatic profile with a dedicated kibble shape, to help stimulate the dogs appetite particularly in cases of food aversion.

KEY VALUES	Per 1000Kcal	Per 100g as fed
Moisture	23.85g	9.50g
Protein	35.14g	14.00g
Fat content	45.18g	18.00g
Crude fibre	6.02g	2.40g
Crude ash	10.04g	4.00g
Carbohydrate (NFE)	132.03g	52.60g
Dietary fibre	20.33g	8.10g
Omega 6	10.49g	4.18g
Omega 3	2.79g	1.11g
EPA + DHA	1.18g	0.47g
Calcium	1.00g	0.40g
Phosphorus	0.50g	0.20g
Sodium	0.88g	0.35g
Potassium	1.51g	0.60g
Magnesium	0.23g	0.09g
Vitamin D	251.00 IU	100.00 IU
Vitamin E	125.50 IU	50.00 IU

**CALCULATED METABOLISABLE ENERGY (TOTAL)**  
Energy\_NRC 2006 (TDF) (kcal/kg) 398.40

Essential Fatty Acids: 4%.

### COMPOSITION

Rice, maize flour, animal fats, maize gluten, maize, hydrolysed animal proteins, beet pulp, wheat gluten\*\*, minerals, fish oil, vegetable fibres, soya oil, psyllium husks and seeds, fructo-oligo-saccharides, mono - and diglycerides of palmitic and stearic acids esterified with citric acid, marigold extract (source of lutein). Protein sources: maize gluten, hydrolysed animal proteins, wheat gluten\*\*.

\*\*L.I.P.: protein selected for its very high digestibility.

### ADDITIVES (KG)\*\*\*

Nutritional additives: Vitamin A: 15500 IU, Vitamin D3: 1000 IU, Iron (3b103): 40mg, Iodine (3b201, 3b202): 4mg, Copper (3b405, 3b406): 12mg, Manganese (3b502, 3b504): 52mg, Zinc (3b603, 3b605, 3b606): 156mg, Selenium (3b801, 3b811, 3b812): 0.05mg - Technological additives: Clinoptilolite of sedimentary origin: 5g - Preservatives - Antioxidants.

\*\*\*Values reflect only levels added to the formula, not those naturally occurring in components of the diet.



# RENAL

SMALL DOGS



Available in  
1.5 and  
3.5kg bags

## RECOMMENDED DAILY INTAKE & FEEDING DURATION

ADULT DOG	DOG'S WEIGHT (kg)	BODY CONDITION					
		THIN		NORMAL		OVERWEIGHT	
		grams	cups	grams	cups	grams	cups
	<b>2</b>	53	5/8	46	4/8	40	4/8
	<b>2.5</b>	62	6/8	55	5/8	47	4/8
	<b>3</b>	72	6/8	63	6/8	54	5/8
	<b>3.5</b>	80	7/8	71	6/8	61	5/8
	<b>4</b>	89	1	78	7/8	67	6/8
	<b>4.5</b>	97	1 + 1/8	85	1	74	7/8
	<b>5</b>	105	1 + 1/8	92	1	80	7/8
	<b>5.5</b>	113	1 + 2/8	99	1 + 1/8	86	1
	<b>6</b>	120	1 + 3/8	106	1 + 2/8	91	1
	<b>6.5</b>	128	1 + 4/8	112	1 + 2/8	97	1 + 1/8
	<b>7</b>	135	1 + 4/8	119	1 + 3/8	103	1 + 1/8
	<b>7.5</b>	142	1 + 5/8	125	1 + 3/8	108	1 + 2/8
	<b>8</b>	149	1 + 5/8	131	1 + 4/8	113	1 + 2/8
	<b>8.5</b>	156	1 + 6/8	137	1 + 4/8	119	1 + 3/8
	<b>9</b>	163	1 + 7/8	143	1 + 5/8	124	1 + 3/8
	<b>9.5</b>	170	1 + 7/8	149	1 + 5/8	129	1 + 4/8
	<b>10</b>	176	2	155	1 + 6/8	134	1 + 4/8

\*Renal diets are recommended for dogs in the advanced stages of CKD (stages 2-4). Early Renal may be suitable for dogs in early stage 2, under veterinary recommendation. In case of food aversion, the dog can be switched to another renal option without transition.

Renal diets may be continued for the dog's lifetime.

## KIDNEY DISORDERS

### RECOMMENDED FOR ADULT SMALL BREED DOGS (ADULT WEIGHT < 10KG) IN CASES OF

- Azotaemic Chronic Kidney Disease (IRIS stage 2\* to stage 4)
- Chronic Kidney Disease with proteinuria (IRIS stage 1 to 4)

### NOT RECOMMENDED IN CASE OF

- Growth, gestation/lactation
- Pancreatitis



### RENAL SUPPORT

Formulated with low phosphorus and moderate protein of high quality to support renal function.



### ADAPTED ENERGY

Adapted energy content to reduce meal volume and help support a reduced appetite.



### AROMATIC CHOICE

A specific aromatic profile with a dedicated kibble shape, to help stimulate the dogs appetite particularly in cases of food aversion.

KEY VALUES	Per 1000Kcal	Per 100g as fed
Moisture	23.85g	9.50g
Protein	35.14g	14.00g
Fat content	45.18g	18.00g
Crude fibre	6.02g	2.40g
Crude ash	10.04g	4.00g
Carbohydrate (NFE)	132.03g	52.60g
Dietary fibre	20.33g	8.10g
Omega 6	10.49g	4.18g
Omega 3	2.79g	1.11g
EPA + DHA	1.38g	0.55g
Calcium	1.00g	0.40g
Phosphorus	0.50g	0.20g
Sodium	0.88g	0.35g
Potassium	1.51g	0.60g
Magnesium	0.23g	0.09g
Vitamin D	251.00 IU	100.00 IU
Vitamin E	125.50 IU	50.00 IU

**CALCULATED METABOLISABLE ENERGY (TOTAL)**  
Energy\_NRC 2006 (TDF) (kcal/kg) 398.40

Essential Fatty Acid: 4%.

### COMPOSITION

Rice, maize flour, animal fats, maize gluten, maize, hydrolysed animal proteins, beet pulp, wheat gluten\*\*, minerals, fish oil, vegetable fibres, soya oil, psyllium husks and seeds, fructo-oligo-saccharides, mono - and diglycerides of palmitic and stearic acids esterified with citric acid, marigold extract (source of lutein). Protein sources: maize gluten, hydrolysed animal proteins, wheat gluten\*\*.

\*\*L.I.P.: protein selected for its very high digestibility.

### ADDITIVES (KG)\*\*\*

Nutritional additives: Vitamin A: 15500 IU, Vitamin D3: 1000 IU, Iron (3b103): 40mg, Iodine (3b201, 3b202): 4mg, Copper (3b405, 3b406): 12mg, Manganese (3b502, 3b504): 52mg, Zinc (3b603, 3b605, 3b606): 156mg, Selenium (3b801, 3b811, 3b812): 0.05mg - Technological additives: Clinoptilolite of sedimentary origin: 5g - Preservatives - Antioxidants.

\*\*\*Values reflect only levels added to the formula, not those naturally occurring in components of the diet.



# RENAL



LOAF

Available in  
410g can

## RECOMMENDED DAILY INTAKE & FEEDING DURATION

ADULT DOG	DOG'S WEIGHT (kg)	BODY CONDITION					
		THIN		NORMAL		OVERWEIGHT	
		grams	can	grams	can	grams	can
2	126	1/4	111	1/4	96	1/4	
4	213	2/4	187	2/4	162	2/4	
6	288	3/4	254	2/4	219	2/4	
8	358	3/4	315	3/4	272	3/4	
10	423	1	372	1	321	3/4	
15	573	1 + 2/4	504	1 + 1/4	436	1	
20	711	1 + 3/4	626	1 + 2/4	541	1 + 1/4	
25	841	2	740	1 + 3/4	639	1 + 2/4	
30	964	2 + 1/4	848	2	733	1 + 3/4	
35	1 082	2 + 3/4	952	2 + 1/4	823	2	
40	1196	3	1053	2 + 2/4	909	2 + 1/4	
45	1307	3 + 1/4	1150	2 + 3/4	993	2 + 2/4	
50	1414	3 + 1/2	1244	3	1075	2 + 2/4	
55	1519	3 + 3/4	1337	3 + 1/4	1154	2 + 3/4	
60	1621	4	1427	3 + 2/4	1232	3	
70	1820	4 + 2/4	1602	4	1383	3 + 1/4	
80	2012	5	1770	4 + 1/4	1529	3 + 3/4	

\*Renal diets are recommended for dogs in the advanced stages of CKD (stages 2-4). Early Renal may be suitable for dogs in early stage 2, under veterinary recommendation. In case of food aversion, the dog can be switched to another renal option without transition.

Renal diets may be continued for the dog's lifetime.

## KIDNEY DISORDERS

### RECOMMENDED FOR CASES OF

- Azotaemic Chronic Kidney Disease (IRIS stage 2\* to stage 4)
- Chronic Kidney Disease with proteinuria (IRIS stage 1 to 4)

### NOT RECOMMENDED IN CASE OF

- Growth, gestation/lactation
- Pancreatitis



### RENAL SUPPORT

Formulated with low phosphorus and moderate protein of high quality to support renal function.



### ADAPTED ENERGY

Adapted energy content to reduce meal volume and help support a reduced appetite.



### AROMATIC CHOICE

A specific aromatic profile with a dedicated texture to help stimulate the dog's appetite, particularly in cases of food aversion.

KEY VALUES	Per 1000Kcal	Per 100g as fed
Moisture	416.14g	66.00g
Protein	34.05g	5.40g
Fat content	56.75g	9.00g
Crude fibre	6.31g	1.00g
Crude ash	10.72g	1.70g
Carbohydrate (NFE)	106.56g	16.90g
Dietary fibre	12.61g	2.00g
Omega 6	18.92g	3.00g
Omega 3	2.14g	0.34g
EPA + DHA	1.39g	0.22g
Calcium	1.07g	0.17g
Phosphorus	0.69g	0.11g
Sodium	1.07g	0.17g
Potassium	1.77g	0.28g
Magnesium	0.22g	0.035g
Vitamin D	239.60 IU	38.00 IU
Vitamin E	271.12 IU	43.00 IU

**CALCULATED METABOLISABLE ENERGY (TOTAL)**  
Energy\_NRC 2006 (TDF) (kcal/100g) 158.60

Essential Fatty acid: 2.9 %

### COMPOSITION

Poultry by-products\*\*, rice, pork by-products\*\*, maize flour, sunflower oil refined, minerals, rice flour, powdercellulose, fish oil, dried beet pulp, fructo-oligosaccharides, marigold extract (source of lutein).

\*\*Protein sources.

### ADDITIVES (KG)\*\*\*

Nutritional additives: Vitamin D3: 430 IU, Iron [3b103]: 13mg, Iodine [3b202]: 0.5mg, Copper [3b405, 3b406]: 4.1mg, Manganese [3b502, 3b503, 3b504]: 3.9mg, Zinc [3b603, 3b605, 3b606]: 39mg - Technological additives: cinnoptilolite of sedimentary origin: 0.4g.

\*\*\*Values reflect only levels added to the formula, not those naturally occurring in components of the diet.

# RENAL



THIN SLICES IN GRAVY

Available in box  
of 12 pouches  
of 100g

## RECOMMENDED DAILY INTAKE & FEEDING DURATION

ADULT DOG	DOG'S WEIGHT (kg)	BODY CONDITION					
		THIN		NORMAL		OVERWEIGHT	
		grams	pouch	grams	pouch	grams	pouch
2	210	2	185	2	159	1 + 1/2	
4	353	3 + 1/2	311	3	268	2 + 1/2	
6	478	5	421	4	363	3 + 1/2	
8	593	6	522	5	451	4 + 1/2	
10	702	7	617	6	533	5 + 1/2	
15	951	9 + 1/2	837	8 + 1/2	723	7	
20	1180	12	1038	10 + 1/2	897	9	
25	1395	14	1227	12 + 1/2	1060	10 + 1/2	
30	1599	16	1407	14	1215	12	
35	1795	18	1580	16	1364	13 + 1/2	
40	1984	20	1746	17 + 1/2	1508	15	
45	2167	21 + 1/2	1907	19	1647	16 + 1/2	
50	2346	23 + 1/2	2064	20 + 1/2	1783	18	
55	2519	25	2217	22	1915	19	
60	2689	27	2367	23 + 1/2	2044	20 + 1/2	
70	3019	30	2657	26 + 1/2	2294	23	
80	3337	33 + 1/2	2937	29 + 1/2	2536	25 + 1/2	

\*Renal diets are recommended for dogs in the advanced stages of CKD (stages 2-4). Early Renal may be suitable for dogs in early stage 2, under veterinary recommendation. In case of food aversion, the dog can be switched to another renal option without transition. Renal diets may be continued for the dog's lifetime.

## KIDNEY DISORDERS

### RECOMMENDED FOR CASES OF

- Azotaemic Chronic Kidney Disease (IRIS stage 2\* to stage 4)
- Chronic Kidney Disease with proteinuria (IRIS stage 1 to 4)

### NOT RECOMMENDED IN CASE OF

- Growth, gestation/lactation
- Pancreatitis



### RENAL SUPPORT

Formulated with low phosphorus and moderate protein of high quality to support renal function.



### EASY TO MIX

In the case of mixed feeding, the texture of thin slices in gravy eases the blend with ROYAL CANIN® RENAL dry range diets for dogs.



### AROMATIC CHOICE

A specific aromatic profile with a dedicated texture to help stimulate the dog's appetite, particularly in cases of food aversion.

KEY VALUES	Per 1000Kcal	Per 100g as fed
Moisture	834.20g	80.00g
Protein	38.58g	3.70g
Fat content	62.57g	6.00g
Crude fibre	6.26g	0.60g
Crude ash	12.51g	1.20g
Carbohydrate (NFE)	88.63g	8.50g
Dietary fibre	13.03g	1.25g
Omega 6	16.68g	1.60g
Omega 3	1.67g	0.16g
EPA + DHA	0.94g	0.09g
Calcium	1.56g	0.15g
Phosphorus	0.83g	0.08g
Sodium	0.94g	0.09g
Potassium	1.77g	0.17g
Magnesium	0.24g	0.023g
Vitamin D	271.12 IU	26.00 IU
Vitamin E	208.55 IU	20.00 IU

**CALCULATED METABOLISABLE ENERGY (TOTAL)**  
Energy\_NRC 2006 (TDF) (kcal/100g) 95.90

Essential Fatty acid: 1.6 %

### COMPOSITION

Poultry by-products\*\*, corn starch mixture, beef by-products\*\*, pork by-products\*\*, maize flour, sunflower oil refined, minerals, powdercellulose, pork blood products\*\*, dried beet pulp, crude lecithins, fish oil, fructo-oligosaccharides, marigold extract (source of lutein).

\*\*Protein source.

### ADDITIVES (KG)\*\*\*

Nutritional additives: Vitamin D3: 250 IU, Iron [3b103]: 10mg, Iodine [3b202]: 0.3mg, Copper [3b405, 3b406]: 2.6mg, Manganese [3b502, 3b503, 3b504]: 3mg, Zinc [3b603, 3b605, 3b606]: 30mg - Technological additives: cinnoptilolite of sedimentary origin: 0.4g.

\*\*\*Values reflect only levels added to the formula, not those naturally occurring in components of the diet.



# RENAL SPECIAL



Available in  
2 and  
10kg bags

## RECOMMENDED DAILY INTAKE & FEEDING DURATION

ADULT DOG	DOG'S WEIGHT (kg)	BODY CONDITION					
		THIN		NORMAL		OVERWEIGHT	
		grams	cups	grams	cups	grams	cups
	2	54	5/8	48	4/8	41	4/8
	4	91	1	80	7/8	69	6/8
	6	124	1 + 3/8	109	1 + 2/8	94	1
	8	154	1 + 6/8	135	1 + 4/8	117	1 + 2/8
	10	182	2	160	1 + 6/8	138	1 + 4/8
	15	246	2 + 6/8	217	2 + 3/8	187	2
	20	305	3 + 3/8	269	3	232	2 + 4/8
	25	361	4	318	3 + 4/8	274	3
	30	414	4 + 4/8	364	4	315	3 + 4/8
	35	465	5 + 1/8	409	4 + 4/8	353	3 + 7/8
	40	514	5 + 5/8	452	5	390	4 + 2/8
	45	561	6 + 1/8	494	5 + 3/8	427	4 + 5/8
	50	607	6 + 5/8	534	5 + 7/8	462	5 + 1/8
	55	652	7 + 1/8	574	6 + 2/8	496	5 + 4/8
	60	696	7 + 5/8	613	6 + 6/8	529	5 + 6/8
	70	782	8 + 5/8	688	7 + 4/8	594	6 + 4/8
	80	864	9 + 4/8	760	8 + 3/8	657	7 + 2/8

\*Renal diets are recommended for dogs in the advanced stages of CKD (stages 2-4). Early Renal may be suitable for dogs in early stage 2, under veterinary recommendation. In case of food aversion, the dog can be switched to another renal option without transition.

Renal diets may be continued for the dog's lifetime.

## KIDNEY DISORDERS

### RECOMMENDED FOR CASES OF

- Azotaemic Chronic Kidney Disease (IRIS stage 2\* to stage 4)
- Chronic Kidney Disease with proteinuria (IRIS stage 1 to 4)

### NOT RECOMMENDED IN CASE OF

- Growth, gestation/lactation
- Pancreatitis



### RENAL SUPPORT

Formulated with low phosphorus and moderate protein of high quality to support renal function.



### ADAPTED ENERGY

Adapted energy content to reduce meal volume and help support a reduced appetite.



### AROMATIC CHOICE

A specific aromatic profile with a dedicated kibble shape, to help stimulate the dogs appetite particularly in cases of food aversion.

KEY VALUES	Per 1000Kcal	Per 100g as fed
Moisture	24.55g	9.50g
Protein	33.59g	13.00g
Fat content	41.34g	16.00g
Crude fibre	6.20g	2.40g
Crude ash	11.63g	4.50g
Carbohydrate (NFE)	141.34g	54.70g
Dietary fibre	20.67g	8.00g
Omega 6	9.20g	3.56g
Omega 3	2.71g	1.05g
EPA + DHA	1.21g	0.47g
Calcium	1.55g	0.60g
Phosphorus	0.78g	0.30g
Sodium	0.90g	0.35g
Potassium	1.55g	0.60g
Magnesium	0.26g	0.10g
Vitamin D	258.40 IU	100.00 IU
Vitamin E	129.20 IU	50.00 IU

### CALCULATED METABOLISABLE ENERGY (TOTAL)

Energy\_NRC 2006 (TDF) (kcal/kg) 387.00

Essential Fatty Acid: 3.4%.

### COMPOSITION

Rice, maize flour, animal fats, maize, dehydrated poultry protein, hydrolysed animal proteins, beet pulp, wheat gluten\*\*\*, minerals, fish oil, vegetable fibres, soya oil, butyric acid salt, psyllium husks and seeds, fructo-oligo-saccharides, mono - and diglycerides of palmitic and stearic acids esterified with citric acid, marigold extract (source of lutein). Protein sources: dehydrated poultry protein, hydrolysed animal proteins, wheat gluten\*\*.

\*\*L.I.P.: protein selected for its very high digestibility.

### ADDITIVES (KG)\*\*\*

Nutritional additives: Vitamin A: 15500 IU, Vitamin D3: 1000 IU, Iron (3b103): 40mg, Iodine (3b201, 3b202): 4 mg, Copper (3b405, 3b406): 12mg, Manganese (3b502, 3b504): 52mg, Zinc (3b603, 3b605, 3b606): 152mg, Selenium (3b801, 3b811, 3b812): 0.05mg - Technological additives: Clinoptilolite of sedimentary origin: 5g - Preservatives - Antioxidants.

\*\*\*Values reflect only levels added to the formula, not those naturally occurring in components of the diet.



# RENAL SPECIAL



LOAF

Available in  
410g can

## RECOMMENDED DAILY INTAKE & FEEDING DURATION

ADULT DOG	DOG'S WEIGHT (kg)	BODY CONDITION					
		THIN		NORMAL		OVERWEIGHT	
		grams	can	grams	can	grams	can
	2	125	1/4	110	1/4	95	1/4
	4	210	2/4	185	2/4	160	2/4
	6	285	3/4	251	2/4	217	2/4
	8	354	3/4	311	3/4	269	3/4
	10	418	1	368	1	318	3/4
	15	566	1 + 2/4	498	1 + 1/4	430	1
	20	703	1 + 3/4	618	1 + 2/4	534	1 + 1/4
	25	831	2	731	1 + 3/4	631	1 + 2/4
	30	953	2 + 1/4	838	2	724	1 + 3/4
	35	1069	2 + 2/4	941	2 + 1/4	813	2
	40	1182	3	1040	2 + 2/4	898	2 + 1/4
	45	1291	3 + 1/4	1136	2 + 3/4	981	2 + 2/4
	50	1397	3 + 2/4	1230	3	1062	2 + 2/4
	55	1501	3 + 3/4	1321	3 + 1/4	1141	2 + 3/4
	60	1602	4	1410	3 + 2/4	1218	3
	70	1798	4 + 2/4	1583	3 + 3/4	1367	3 + 1/4
	80	1988	4 + 3/4	1749	4 + 1/4	1511	3 + 3/4

\*Renal diets are recommended for dogs in the advanced stages of CKD (stages 2-4). Early Renal may be suitable for dogs in early stage 2, under veterinary recommendation. In case of food aversion, the dog can be switched to another renal option without transition.

Renal diets may be continued for the dog's lifetime.

## KIDNEY DISORDERS

### RECOMMENDED FOR CASES OF

- Azotaemic Chronic Kidney Disease (IRIS stage 2\* to stage 4)
- Chronic Kidney Disease with proteinuria (IRIS stage 1 to 4)

### NOT RECOMMENDED IN CASE OF

- Growth, gestation/lactation
- Pancreatitis



### RENAL SUPPORT

Formulated with low phosphorus and moderate protein of high quality to support renal function.



### ADAPTED ENERGY

Adapted energy content to reduce meal volume and help support a reduced appetite.



### AROMATIC CHOICE

A specific aromatic profile with a dedicated texture to help stimulate the dog's appetite, particularly in cases of food aversion.

KEY VALUES	Per 1000Kcal	Per 100g as fed
Moisture	405.49g	65.00g
Protein	37.43g	6.00g
Fat content	56.14g	9.00g
Crude fibre	7.49g	1.20g
Crude ash	11.85g	1.90g
Carbohydrate (NFE)	105.43g	16.90g
Dietary fibre	14.35g	2.30g
Omega 6	16.84g	2.70g
Omega 3	2.81g	0.45g
EPA + DHA	1.62g	0.26g
Calcium	1.56g	0.25g
Phosphorus	0.81g	0.13g
Sodium	0.94g	0.15g
Potassium	1.81g	0.29g
Magnesium	0.23g	0.037g
Vitamin D	330.63 IU	53.00 IU
Vitamin E	274.49 IU	44.00 IU

### CALCULATED METABOLISABLE ENERGY (TOTAL)

Energy\_NRC 2006 (TDF) (kcal/100g) 160.30

Essential Fatty acid: 2.7 %.

### COMPOSITION

Poultry by-products\*\*, rice, pork by-products\*\*, salmon\*\*, sunflower oil refined, powdercellulose, minerals, rice flour, fish oil, dried beet pulp, fructo-oligo-saccharides, marigold extract (source of lutein).

\*\*Protein sources.

### ADDITIVES (KG)\*\*\*

Nutritional additives: Vitamin D3: 440 IU, Iron (3b103): 13mg, Iodine (3b202): 0.4mg, Copper (3b405, 3b406): 3.6mg, Manganese (3b502, 3b503, 3b504): 4.1mg, Zinc (3b603, 3b605, 3b606): 4.1mg - Technological additives: clinoptilolite of sedimentary origin: 0.4g.

\*\*\*Values reflect only levels added to the formula, not those naturally occurring in components of the diet.





# RENAL SELECT



Available in  
2 and  
10kg bags

## RECOMMENDED DAILY INTAKE & FEEDING DURATION

ADULT DOG	DOG'S WEIGHT (kg)	BODY CONDITION					
		THIN		NORMAL		OVERWEIGHT	
		grams	cups	grams	cups	grams	cups
2	53	5/8	47	4/8	40	4/8	
4	89	1	78	7/8	68	6/8	
6	121	1 + 3/8	106	1 + 1/8	92	1	
8	150	1 + 5/8	132	1 + 4/8	114	1 + 2/8	
10	177	2	156	1 + 6/8	135	1 + 4/8	
15	240	2 + 5/8	212	2 + 3/8	183	2	
20	298	3 + 2/8	262	2 + 7/8	227	2 + 4/8	
25	353	3 + 7/8	310	3 + 3/8	268	3	
30	404	4 + 3/8	356	3 + 7/8	307	3 + 3/8	
35	454	5	399	4 + 3/8	345	3 + 6/8	
40	502	5 + 4/8	441	4 + 7/8	381	4 + 1/8	
45	548	6	482	5 + 2/8	416	4 + 4/8	
50	593	6 + 4/8	522	5 + 6/8	451	5	
55	637	7	560	6 + 1/8	484	5 + 2/8	
60	680	7 + 4/8	598	6 + 4/8	517	5 + 5/8	
65	722	7 + 7/8	635	7	549	6	
70	763	8 + 3/8	672	7 + 3/8	580	6 + 3/8	
75	804	8 + 7/8	707	7 + 6/8	611	6 + 6/8	
80	844	9 + 2/8	742	8 + 1/8	641	7	

\*Renal diets are recommended for dogs in the advanced stages of CKD (stages 2-4). Early Renal may be suitable for dogs in early stage 2, under veterinary recommendation. In case of food aversion, the dog can be switched to another renal option without transition.

Renal diets may be continued for the dog's lifetime.

## KIDNEY DISORDERS

### RECOMMENDED FOR CASES OF

- Azotaemic Chronic Kidney Disease (IRIS stage 2\* to stage 4)
- Chronic Kidney Disease with proteinuria (IRIS stage 1 to 4)

### NOT RECOMMENDED IN CASE OF

- Growth, gestation/lactation
- Pancreatitis



### RENAL SUPPORT

Formulated with low phosphorus and moderate protein of high quality to support renal function.



### ADAPTED ENERGY

Adapted energy content to reduce meal volume and help support a reduced appetite.



### AROMATIC CHOICE

A specific aromatic profile with a dedicated kibble shape, to help stimulate the dogs appetite particularly in cases of food aversion.

KEY VALUES	Per 1000Kcal	Per 100g as fed
Moisture	23.97g	9.50g
Protein	31.53g	12.50g
Fat content	45.41g	18.00g
Crude fibre	6.05g	2.40g
Crude ash	11.10g	4.40g
Carbohydrate (NFE)	135.47g	53.70g
Dietary fibre	20.43g	8.10g
Omega 6	10.32g	4.09g
Omega 3	2.80g	1.11g
EPA + DHA	1.19g	0.47g
Calcium	1.51g	0.60g
Phosphorus	0.76g	0.30g
Sodium	0.88g	0.35g
Potassium	1.51g	0.60g
Magnesium	0.25g	0.10g
Vitamin D	252.27 IU	100.00 IU
Vitamin E	126.14 IU	50.00 IU

### CALCULATED METABOLISABLE ENERGY (TOTAL)

Energy\_NRC 2006 (TDF) (kcal/kg) 399.70

Essential Fatty Acid: 3.87%.

### COMPOSITION

Rice, maize flour, animal fats, maize, dehydrated poultry protein, hydrolysed animal proteins, beet pulp, wheat gluten\*\*, fish oil, minerals, vegetable fibres, soya oil, psyllium husks and seeds, fructo-oligo-saccharides, mono - and diglycerides of palmitic and stearic acids esterified with citric acid, marigold extract (source of lutein). Protein sources: dehydrated poultry protein, hydrolysed animal proteins, wheat gluten\*\*.

\*\*L.I.P.: protein selected for its very high digestibility.

### ADDITIVES (KG)\*\*\*

Nutritional additives: Vitamin A: 15500 IU, Vitamin D3: 1000 IU, Iron [3b103]: 46mg, Iodine [3b201, 3b202]: 4.6mg, Copper [3b405, 3b406]: 14mg, Manganese [3b502, 3b504]: 60mg, Zinc [3b603, 3b605, 3b606]: 152mg, Selenium [3b801, 3b811, 3b812]: 0.06mg - Technological additives: Clinoptilolite of sedimentary origin: 5g - Preservatives - Antioxidants.

\*\*\*Values reflect only levels added to the formula, not those naturally occurring in components of the diet.

# RENAL LIQUID



Available in pack of  
3 x 200ml bottles

## RECOMMENDED DAILY INTAKE & FEEDING DURATION

ADULT DOG	ENERGY LEVEL: CONVALESCING DOG CONFINED IN A CAGE	
	DOG'S WEIGHT (kg)	LIQUID (ml/day)
	2	80
3	105	
4	130	
5	155	
6	180	
7	200	
8	220	
9	240	
10	260	
12	300	
14	335	
16	370	
18	405	
20	440	
25	520	
30	595	
35	670	
40	740	
45	810	
50	875	
55	940	
60	1005	
70	1125	
80	1245	

DOGS CONFINED IN A KENNEL. It is advised to meet the Resting Energy Requirements (R.E.R) according to the formula: **RER (in kcal/day) = 70x(body weight in kg)<sup>0.75</sup>**. The amount of food should be reevaluated according to the clinical evolution of the pet.

In case of anorexia, a **refeeding schedule** is strongly recommended:

• **If anorexia < 3 days:** plan to meet the requirements in 3 days. Day 1: 1/3 of requirements, day 2: 2/3 of requirements, day 3: Full requirements.

• **If anorexia ≥ 3 days:** plan to meet the requirements in 5 days. Day 1: 1/4 of requirements, day 2: 1/2 of requirements, day 3: 2/3 of requirements, day 4: 3/4 of requirements, day 5: Full requirements. It is recommended to divide the daily intake into several small meals.

## CONVALESCENCE PERIOD

### RECOMMENDED FOR TUBE-FEEDING IN CASES OF

- Acute Kidney Injury (AKI)
- Azotaemic Chronic Kidney Disease (IRIS stage 2 to stage 4)
- Chronic Kidney Disease with proteinuria (IRIS stage 1 to 4)
- Hepatic encephalopathy

### NOT RECOMMENDED IN CASE OF

- Growth, gestation/lactation
- Pancreatitis or history of pancreatitis
- Hyperlipidemia



### RENAL DIETARY MANAGEMENT

Formulated to support renal function in case of renal insufficiency: high quality proteins and restricted levels of phosphorus. Contains EPA + DHA and antioxidants.



### HIGH ENERGY (1.5 KCAL/ML)

High energy density that provides daily energy requirements in a reduced feeding volume.



### COMPLETE NUTRITION

Complete and balanced liquid diet to support the renal function in case of renal insufficiency, for cats requiring assisted enteral nutrition.



### ANTIOXIDANT COMPLEX

The synergistic antioxidant complex (including high levels of Vit E, Vit C, taurine and lutein) helps neutralise free radicals.



### EASY TUBE FEEDING

Liquid formula with adapted viscosity for an easy use whatever the tube size.

KEY VALUES	Per 1000Kcal	Per 100ml as fed
Moisture	508.12g	72g
Protein	35.29g	5.00g
Fat content	56.46g	8.00g
Crude ash	7.06g	1.00g
Carbohydrate (NFE)	100.21g	14.20g
Omega 6	16.94g	2.40g
Omega 3	4.45g	0.63g
EPA + DHA	1.20g	0.17g
Calcium	1.13g	0.16g
Phosphorus	0.78g	0.11g
Sodium	0.92g	0.13g
Potassium	1.20g	0.17g
Magnesium	0.18g	0.025g
Vitamin D	155.26 IU	22.00 IU
Vitamin E	162.31	1U23.00 IU

### CALCULATED METABOLISABLE ENERGY (TOTAL)

Energy\_NRC 2006 (CFI) (kcal/100ml) 141.70

Note: Metabolisable energy used for claim: 150kcal/100ml

[Calculated according to NRC2006-TDF].

Chloride: 0.25%

### COMPOSITION

Milk low lactose\*, maltodextrin, vegetable oils, calcium caseinate\*, minerals, fish oil, mono and diglyceride of fatty acids, marigold extract (source of lutein).

\*Source of protein

### ADDITIVES (per l)\*\*\*

Nutritional additives: Vitamin A: 6700 IU, Vitamin D3: 220 IU, E1 (Iron): 40mg, E2 (Iodine): 1mg, E4 (Copper): 4mg, E5 (Manganese): 3mg, E6 (Zinc): 63mg, E8 (Selenium): 0.2mg.

\*\*\*Values reflect only levels added to the formula, not those naturally occurring in components of the diet.



# MULTIFUNCTION RENAL HYPOALLERGENIC



Available in  
4 and 10kg bag

## RECOMMENDED DAILY INTAKE & FEEDING DURATION

ADULT DOG	DOG'S WEIGHT (kg)	BODY CONDITION					
		THIN		NORMAL		OVERWEIGHT	
		grams	cups	grams	cups	grams	cups
	<b>2</b>	52	4/8	46	4/8	40	3/8
	<b>4</b>	88	7/8	77	6/8	67	6/8
	<b>6</b>	119	1 + 2/8	105	1 + 1/8	91	1
	<b>8</b>	148	1 + 4/8	130	1 + 3/8	112	1 + 1/8
	<b>10</b>	175	1 + 7/8	154	1 + 5/8	133	1 + 3/8
	<b>15</b>	237	2 + 4/8	208	2 + 1/8	180	1 + 7/8
	<b>20</b>	294	3 + 1/8	259	2 + 6/8	223	2 + 3/8
	<b>25</b>	347	3 + 5/8	306	3 + 2/8	264	2 + 6/8
	<b>30</b>	398	4 + 1/8	350	3 + 5/8	303	3 + 1/8
	<b>35</b>	447	4 + 5/8	393	4 + 1/8	340	3 + 4/8
	<b>40</b>	494	5 + 1/8	435	4 + 4/8	376	3 + 7/8
	<b>45</b>	540	5 + 5/8	475	5	410	4 + 2/8
	<b>50</b>	584	6 + 1/8	514	5 + 3/8	444	4 + 5/8
	<b>55</b>	628	6 + 4/8	552	5 + 6/8	477	5
	<b>60</b>	670	7	589	6 + 1/8	509	5 + 2/8
	<b>70</b>	752	7 + 7/8	662	6 + 7/8	571	6
	<b>80</b>	831	8 + 5/8	731	7 + 5/8	632	6 + 5/8

\*For nutritional management of dogs with Chronic Kidney Disease (stage 2-4) and Adverse Food Reaction. Initially feed the diet for 3-8 weeks and re-evaluate based on clinical assessment of the response. When a food allergy or a food intolerance is suspected, the dog's diet should be changed following classical food transition. Renal + Hypoallergenic can be fed for the dog's lifetime. It is recommended to divide the daily intake into 2 meals.

## RECOMMENDED FOR CASES OF

### Renal disease

- Azotaemic Chronic Kidney Disease (IRIS stage 2\* to stage 4)
- Chronic Kidney Disease with proteinuria (IRIS stage 1 to 4)

### + Dermatological/GI conditions:

- Food elimination trial
- Food allergies
- Food intolerance
- Inflammatory Bowel Disease (IBD)
- Chronic diarrhoea
- Exocrine Pancreatic Insufficiency (EPI)
- Small Intestinal Bacterial Overgrowth (SIBO)

### NOT RECOMMENDED IN CASE OF

- Pancreatitis
- Growth, gestation/lactation



### RENAL SUPPORT

Formulated with low phosphorus and moderate protein of high quality to support renal function.



### ADAPTED ENERGY

Adapted energy content to reduce meal volume and help support a reduced appetite.



### HYDROLYSED PROTEIN

Hydrolysed soya protein isolate with a low molecular weight for very low allergenicity.



### SKIN BARRIER

A specially formulated complex of nutrients to support the skin's natural protective barrier role and for optimal skin health.

KEY VALUES	Per 1000Kcal	Per 100g as fed
Moisture	23.61g	9.50g
Protein	34.80g	14.00g
Fat content	47.23g	19.00g
Crude fibre	5.97g	2.40g
Crude ash	10.44g	4.20g
Carbohydrate (NFE)	127.02g	51.10g
Dietary fibre	16.90g	6.80g
Omega 6	10.56g	4.25g
Omega 3	2.61g	1.05g
EPA + DHA	1.24g	0.50g
Calcium	0.75g	0.30g
Phosphorus	0.37g	0.15g
Sodium	0.87g	0.35g
Magnesium	0.15g	0.06g
Copper	3.73mg	1.50mg
Zinc	42.51mg	17.10mg
Vitamin A	8948.55 IU	3600.00 IU
Vitamin E	169.03 IU	68.00 IU

## CALCULATED METABOLISABLE ENERGY (TOTAL)

Energy\_NRC 2006 (CF) (kcal/kg) 402.30

Essential fatty acids 4%.

## COMPOSITION

Rice, animal fats, soya protein isolate\*\*, chicory pulp, soya oil, vegetable fibres, fish oil, minerals, fructo-oligosaccharides, butyric acid salt, borage oil, marigold extract (source of lutein). Carbohydrate source: rice. Protein source: soya protein isolate.

\*\*L.I.P.: protein selected for its very high digestibility

## ADDITIVES (KG)\*\*\*

Nutritional additives: Vitamin A: 36 000 IU, Vitamin D3: 800 IU, Iron (3b103): 41mg, Iodine (3b201, 3b202): 3.7mg, Copper (3b405, 3b406): 15mg, Manganese (3b502, 3b504): 54mg, Zinc (3b603, 3b605, 3b606): 159mg, Selenium (3b801, 3b811, 3b812): 0.26mg - Technological additives: Clinoptilolite of sedimentary origin: 10g - Preservatives - Antioxidants

\*\*\*Values reflect only levels added to the formula, not those naturally occurring in components of the diet.



# MOBILITY SUPPORT



Available in  
2, 7 and  
12kg bags

## RECOMMENDED DAILY INTAKE & FEEDING DURATION

ADULT DOG	DOG'S WEIGHT (kg)	BODY CONDITION					
		THIN		NORMAL		OVERWEIGHT	
		grams	cups	grams	cups	grams	cups
	<b>2</b>	51	5/8	44	4/8	37	3/8
	<b>4</b>	85	1	74	7/8	62	6/8
	<b>6</b>	116	1 + 3/8	100	1 + 1/8	84	1
	<b>8</b>	144	1 + 5/8	124	1 + 3/8	105	1 + 2/8
	<b>10</b>	170	2	147	1 + 6/8	124	1 + 3/8
	<b>15</b>	230	2 + 5/8	199	2 + 2/8	167	1 + 7/8
	<b>20</b>	286	3 + 2/8	247	2 + 7/8	208	2 + 3/8
	<b>25</b>	338	3 + 7/8	292	3 + 3/8	246	2 + 7/8
	<b>30</b>	387	4 + 4/8	334	3 + 7/8	282	3 + 2/8
	<b>35</b>	435	5	375	4 + 3/8	316	3 + 5/8
	<b>40</b>	481	5 + 5/8	415	4 + 6/8	349	4
	<b>45</b>	525	6 + 1/8	453	5 + 2/8	382	4 + 3/8
	<b>50</b>	568	6 + 5/8	491	5 + 5/8	413	4 + 6/8
	<b>55</b>	610	7	527	6 + 1/8	444	5 + 1/8
	<b>60</b>	651	7 + 4/8	562	6 + 4/8	474	5 + 4/8
	<b>70</b>	731	8 + 4/8	631	7 + 2/8	532	6 + 1/8
	<b>80</b>	808	9 + 3/8	698	8 + 1/8	588	6 + 6/8

Mobility Support diet may be continued for the dog's lifetime and it is recommended to divide the daily ration into two meals.

## SUPPORT HEALTHY JOINT FUNCTION

### RECOMMENDED FOR

- Supporting healthy joint function
- Supporting joints after orthopaedic surgery

### NOT RECOMMENDED IN CASE OF

- Growth, gestation/lactation



### JOINT COMPLEX

New Zealand Green Lipped Mussel extract to help maintain healthy joints.



### OMEGA-3

Enriched with omega-3 fatty acids to help maintain healthy joints.



### MODERATE CALORIE

Joints are under stress when dogs are overweight. Moderate calorie content to support joint health by maintaining an ideal body weight.

KEY VALUES	Per 1000Kcal	Per 100g as fed
Moisture	26.09g	9.50g
Protein	68.66g	25.00g
Fat content	32.68g	11.90g
Crude fibre	8.24g	3.00g
Ash	15.38g	5.60g
Carbohydrate (NFE)	123.59g	45.00g
Dietary fibre	21.70g	7.90g
Omega 6	6.15g	2.24g
Omega 3	2.55g	0.93g
Linoleic acid	5.58g	2.03g
EPA + DHA	1.65g	0.60g
Glucosamine + Chondroitin	274.65mg	100mg
Calcium	2.58g	0.94g
Phosphorus	1.43g	0.52g
Sodium	0.69g	0.25g
Magnesium	0.25g	0.09g
Taurine	0.30g	0.11g
Vitamin C	71.41mg	26mg
Vitamin E	142.82 IU	52 IU

## CALCULATED METABOLISABLE ENERGY (TOTAL)

Energy\_NRC 2006 (CF) (kcal/kg) 364.1

## COMPOSITION

Rice, maize flour, dehydrated poultry protein, maize, maize gluten, hydrolysed animal proteins, animal fats, beet pulp, vegetable fibres, fish oil, minerals, wheat gluten\*, soya oil, New Zealand greenlipped mussel extract (GLM) [0.30%], glucosamine from fermentation [0.10%], marigold meal, hydrolysed cartilage (source of chondroitin) [0.001%].

\*L.I.P.: protein selected for its very high digestibility.

## ADDITIVES (KG)\*\*

Nutritional additives: Vitamin A: 22000 IU, Vitamin D3: 1025 IU, Iron (3b103): 41mg, Iodine (3b201, 3b202): 4.1mg, Copper (3b405, 3b406): 13mg, Manganese (3b502, 3b504): 53 mg, Zinc (3b603, 3b605, 3b606): 138mg, Selenium (3b801, 3b811, 3b812): 0.09mg - Technological additives: Clinoptilolite of sedimentary origin: 5g - Preservatives - Antioxidants.

\*\*Values reflect only levels added to the formula, not those naturally occurring in components of the diet.



# CARDIAC



Available in  
2 and  
14kg bags

### RECOMMENDED DAILY INTAKE & FEEDING DURATION

ADULT DOG	DOG'S WEIGHT (kg)	BODY CONDITION					
		THIN		NORMAL		OVERWEIGHT	
		grams	cups	grams	cups	grams	cups
2	51	4/8	44	4/8	38	3/8	
4	85	7/8	75	6/8	65	5/8	
6	115	1 + 2/8	101	1 + 1/8	88	7/8	
8	143	1 + 4/8	126	1 + 3/8	109	1 + 1/8	
10	169	1 + 6/8	149	1 + 4/8	128	1 + 3/8	
15	229	2 + 3/8	202	2 + 1/8	174	1 + 7/8	
20	284	3	250	2 + 5/8	216	2 + 2/8	
25	336	3 + 4/8	296	3 + 1/8	255	2 + 5/8	
30	385	4	339	3 + 4/8	293	3	
35	433	4 + 4/8	381	4	329	3 + 3/8	
40	478	5	421	4 + 3/8	363	3 + 6/8	
45	522	5 + 4/8	460	4 + 6/8	397	4 + 1/8	
50	565	5 + 7/8	497	5 + 1/8	430	4 + 4/8	
55	607	6 + 3/8	534	5 + 5/8	461	4 + 6/8	
60	648	6 + 6/8	570	6	493	5 + 1/8	
70	728	7 + 5/8	640	6 + 5/8	553	5 + 6/8	
80	804	8 + 3/8	708	7 + 3/8	611	6 + 3/8	

This diet should be started at the time of diagnosis and its use should be re-evaluated every 6 months in conjunction with a clinical examination.

## HEART FAILURE

### RECOMMENDED FOR CASES OF

- Cardiovascular disease
- Congestive heart failure
- Hypertension

### NOT RECOMMENDED IN CASE OF

- Growth, gestation/lactation
- Obesity
- Stage 3/4 renal disease



### CARDIAC SUPPORT

Formulated with nutrients including taurine and L-carnitine, which help support the cardiac muscle and its function.



### EPA+DHA

EPA+DHA are long chain omega-3 fatty acids that help support cardiovascular function.



### LOW SODIUM

Restricted level of sodium to help reduce the workload on the heart.

### KEY VALUES Per 1000Kcal Per 100g as fed

Moisture	22.85g	9.5g
Protein	62.5g	26.0g
Fat content	48.10g	20g
Crude fibre	3.85g	1.6g
Ash	11.30g	4.7g
NFE	91.87g	38.2g
EPA + DHA	0.91g	0.38g
L-carnitine	199.62mg	83mg
Sodium	0.67g	0.28g
Calcium	2g	0.83g
Phosphorus	1.35g	0.56g
Chloride	1.32g	0.55g
Potassium	1.92g	0.8g
Magnesium	0.36g	0.15g
Taurine	0.82g	0.34g

### CALCULATED METABOLISABLE ENERGY (TOTAL)

Energy_NRC 2006 (TDF) (kcal/kg)	416
---------------------------------	-----

### COMPOSITION

Rice, dehydrated poultry protein, maize flour, animal fats, maize gluten, egg powder, hydrolysed animal proteins, minerals, beet pulp, fish oil, vegetable fibres, soya oil, yeasts products, fructo-oligosaccharides, marigold meal.

### ADDITIVES (KG)\*

Nutritional additives: Vitamin A 18950 IU, Vitamin D3 1200 IU, Vitamin E: 600mg, Vitamin C: 301mg, Taurine: 3.4g, Iron [3b103] 43mg, Iodine [3b201, 3b202] 4.3mg, Copper [3b405, 3b406] 13mg, Manganese [3b502, 3b504] 56mg, Zinc [3b603, 3b605, 3b606] 137mg, Selenium [3b801, 3b811, 3b812] 0.08mg - Antioxidants.

\*Values reflect only levels added to the formula, not those naturally occurring in components of the diet.

# CARDIAC



LOAF

Available in  
410g can

### RECOMMENDED DAILY INTAKE & FEEDING DURATION

ADULT DOG	DOG'S WEIGHT (kg)	BODY CONDITION					
		THIN		NORMAL		OVERWEIGHT	
		grams	cans	grams	cans	grams	cans
2	160	2/4	141	1/4	122	1/4	
4	269	3/4	237	2/4	204	2/4	
6	365	1	321	3/4	277	3/4	
8	453	1	398	1	344	3/4	
10	535	1 + 1/4	471	1 + 1/4	407	1	
15	725	1 + 3/4	638	1 + 2/4	551	1 + 1/4	
20	900	2 + 1/4	792	2	684	1 + 3/4	
25	1064	2 + 2/4	936	2 + 1/4	808	2	
30	1219	3	1073	2 + 2/4	927	2 + 1/4	
35	1369	3 + 1/4	1205	3	1040	2 + 2/4	
40	1513	3 + 3/4	1332	3 + 1/4	1150	2 + 3/4	
45	1653	4	1454	3 + 2/4	1256	3	
50	1789	4 + 1/4	1574	3 + 3/4	1359	3 + 1/4	
55	1921	4 + 3/4	1691	4 + 1/4	1460	3 + 2/4	
60	2051	5	1805	4 + 2/4	1559	3 + 3/4	
70	2302	5 + 2/4	2026	5	1750	4 + 1/4	
80	2545	6 + 1/4	2239	5 + 2/4	1934	4 + 3/4	

This diet should be started at the time of diagnosis and its use should be re-evaluated every 6 months in conjunction with a clinical examination.

## HEART FAILURE

### RECOMMENDED FOR CASES OF

- Cardiovascular disease
- Congestive heart failure
- Hypertension

### NOT RECOMMENDED IN CASE OF

- Growth, gestation/lactation
- Obesity



### CARDIAC SUPPORT

Formulated with nutrients including L-carnitine and taurine to help support healthy heart muscle and function.



### EPA+DHA

EPA+DHA are long chain omega-3 fatty acids that help support cardiovascular function.



### LOW SODIUM

Restricted level of sodium to help reduce the workload on the heart.

### KEY VALUES Per 1000Kcal Per 100g as fed

Moisture	561.07g	73.5g
Protein	61.83g	8.1g
Fat content	56.89g	5.40g
Total Dietary Fibre	11.45g	1.5g
Ash	10.65g	1.41g
NFE	69.25g	9.1g
EPA + DHA	2.28g	0.3g
L-carnitine	183mg	24mg
Sodium	0.46g	0.06g
Calcium	1.90g	0.25g
Phosphorus	1.45g	0.19g
Chloride	1.29g	0.17g
Potassium	1.60g	0.21g
Magnesium	0.30g	0.04g
Taurine	1.67g	0.22g

### CALCULATED METABOLISABLE ENERGY (TOTAL)

Energy_NRC 2006 (CF) (kcal/100g)	131
----------------------------------	-----

### COMPOSITION

Meat & animal derivatives, cereals, oils & fats, derivatives of vegetable origin, minerals.

### ADDITIVES (KG)\*\*

Nutritional additives: Vitamin D3: 280 IU, Vitamin E: 240mg, Vitamin C: 100mg, Taurine: 2.2g, Iron [3b103]: 8mg, Iodine [3b202]: 0.41mg, Copper [3b405, 3b406]: 3.3mg, Manganese [3b502, 3b503, 3b504]: 2.3mg, Zinc [3b603, 3b605, 3b606]: 23mg.

\*\*Values reflect only levels added to the formula, not those naturally occurring in components of the diet.



# DOGS MIX FEEDING GUIDELINES



## MIX: EARLY RENAL DOG DRY + EARLY RENAL DOG THIN SLICES IN GRAVY

100g POUCH

DOGS WEIGHT (kg)	POUCH	BODY CONDITION					
		THIN		NORMAL		OVERWEIGHT	
		DRY (g)	DRY (cup)	DRY (g)	DRY (cup)	DRY (g)	DRY (cup)
2	1/2+	40	3/8	34	3/8	28	3/8
4	1+	64	6/8	54	5/8	43	4/8
6	1+	96	1 + 1/8	82	1	67	6/8
8	1+	125	1 + 4/8	107	1 + 2/8	89	1 + 1/8
10	1+	153	1 + 7/8	132	1 + 5/8	110	1 + 2/8
15	1+	216	2 + 5/8	187	2 + 2/8	158	1 + 7/8
20	2+	249	3	213	2 + 4/8	177	2 + 1/8
25	2+	304	3 + 5/8	261	3 + 1/8	219	2 + 5/8
30	2+	356	4 + 2/8	307	3 + 5/8	258	3 + 1/8
35	2+	405	4 + 7/8	351	4 + 1/8	296	3 + 4/8
40	2+	453	5 + 3/8	393	4 + 5/8	332	4
45	2+	500	6	434	5 + 1/8	368	4 + 3/8
50	2+	545	6 + 4/8	474	5 + 5/8	402	4 + 6/8
55	2+	589	7	512	6 + 1/8	436	5 + 1/8
60	2+	632	7 + 4/8	550	6 + 4/8	468	5 + 5/8
70	2+	716	8 + 4/8	624	7 + 3/8	532	6 + 3/8
80	2+	796	9 + 4/8	695	8 + 2/8	593	7 + 1/8



## MIX: RENAL DOG DRY + RENAL DOG THIN SLICES IN GRAVY

100g POUCH

DOGS WEIGHT (kg)	POUCH	BODY CONDITION					
		THIN		NORMAL		OVERWEIGHT	
		DRY (g)	DRY (cup)	DRY (g)	DRY (cup)	DRY (g)	DRY (cup)
2	1/2+	40	4/8	34	3/8	28	2/8
4	1+	64	6/8	53	5/8	42	4/8
6	1+	95	1	81	7/8	66	6/8
8	1+	124	1 + 3/8	106	1 + 1/8	88	1
10	1+	151	1 + 5/8	130	1 + 3/8	109	1 + 2/8
15	1+	214	2 + 3/8	185	2	157	1 + 6/8
20	2+	246	2 + 6/8	211	2 + 2/8	175	1 + 7/8
25	2+	300	3 + 2/8	258	2 + 7/8	216	2 + 3/8
30	2+	352	3 + 7/8	304	3 + 3/8	255	2 + 6/8
35	2+	401	4 + 3/8	347	3 + 6/8	293	3 + 2/8
40	2+	449	4 + 7/8	389	4 + 2/8	329	3 + 5/8
45	2+	495	5 + 3/8	429	4 + 6/8	364	4
50	2+	540	5 + 7/8	469	5 + 1/8	398	4 + 3/8
55	2+	583	6 + 3/8	507	5 + 5/8	431	4 + 6/8
60	2+	626	6 + 7/8	545	6	464	5 + 1/8
70	2+	709	7 + 6/8	618	6 + 6/8	527	5 + 6/8
80	2+	789	8 + 5/8	688	7 + 4/8	588	6 + 4/8

\* All **RENAL** dry diets for dog can be considered (the metabolisable energy levels of the three diets: **RENAL**, **RENAL SPECIAL**, **RENAL SELECT** and **RENAL SMALL DOG** are similar. Calculation here based on **RENAL** metabolisable energy.



## MIX: RENAL DOG DRY + RENAL DOG LOAF\*\*

410g CAN

DOGS WEIGHT (kg)	CAN	BODY CONDITION					
		THIN		NORMAL		OVERWEIGHT	
		DRY (g)	DRY (cup)	DRY (g)	DRY (cup)	DRY (g)	DRY (cup)
2	1/4+	10	1/8	4	0	-	-
4	1/4+	46	4/8	35	3/8	25	2/8
6	1/4+	78	7/8	63	6/8	49	4/8
8	1/2+	67	6/8	46	4/8	28	2/8
10	1/2+	91	1	70	6/8	49	4/8
15	1/2+	157	1 + 6/8	125	1 + 3/8	96	1
20	1+	126	1 + 3/8	90	1	54	5/8
25	1+	180	2	138	1 + 4/8	96	1
30	1+	231	2 + 4/8	183	2	135	1 + 4/8
35	1+	280	3 + 1/8	226	2 + 4/8	172	1 + 7/8
40	1+	328	3 + 7/8	268	3	208	2 + 2/8
45	1+	374	4 + 1/8	309	3 + 3/8	243	2 + 5/8
50	1+	419	4 + 5/8	348	3 + 7/8	277	3
55	1+	463	5 + 1/8	387	4 + 2/8	311	3 + 3/8
60	1+	505	5 + 4/8	424	4 + 5/8	343	3 + 6/8
70	1+	588	6 + 4/8	497	5 + 4/8	406	4 + 4/8
80	1+	668	7 + 3/8	568	6 + 2/8	467	5 + 1/8

\* All **RENAL** dry diets for dog can be considered (the metabolisable energy levels of the four diets **RENAL**, **RENAL SPECIAL**, **RENAL SELECT** and **RENAL SMALL DOG** are similar. Calculation here based on **RENAL** metabolisable energy).

\*\*Both **RENAL** loaf 410g can diets for dog can be considered (the metabolisable energy levels of **RENAL** loaf 410g can and **RENAL SPECIAL** loaf 410g can are similar. Calculation here based on **RENAL** loaf 410g metabolisable energy).









24H

**MIX: CARDIAC DOG DRY +  
CARDIAC DOG LOAF**

410g CAN

DOGS WEIGHT (kg)	CAN 	BODY CONDITION					
		 THIN		 NORMAL		 OVERWEIGHT	
		DRY (g)	DRY (cup)	DRY (g)	DRY (cup)	DRY (g)	DRY (cup)
2	1/4 +	18	2/8	12	1/8	6	1/8
4	1/4 +	53	4/8	43	4/8	32	3/8
6	1/2 +	83	7/8	69	6/8	55	5/8
8	1/2 +	79	7/8	61	5/8	44	4/8
10	1/2 +	105	1 + 1/8	84	7/8	64	5/8
15	1/2 +	165	1 + 6/8	137	1 + 3/8	110	1 + 1/8
20	1+	156	1 + 5/8	121	1 + 2/8	87	7/8
25	1+	207	2 + 1/8	167	1 + 6/8	127	1 + 3/8
30	1+	257	2 + 5/8	211	2 + 2/8	164	1 + 6/8
35	1+	304	3 + 1/8	252	2 + 5/8	200	2 + 1/8
40	1+	350	3 + 5/8	292	3	235	2 + 4/8
45	1+	394	4 + 1/8	331	3 + 4/8	269	2 + 6/8
50	1+	437	4 + 4/8	369	3 + 7/8	301	3 + 1/8
55	1+	480	5	406	4 + 2/8	333	3 + 4/8
60	1+	521	5 + 3/8	443	4 + 5/8	364	3 + 6/8
70	1+	600	6 + 2/8	513	5 + 3/8	425	4 + 3/8
80	1+	677	7	580	6	484	5





# GUIDELINES

## NUTRITION OF CRITICALLY ILL PATIENTS

When managing a critical care patient, the delivery of adequate and appropriate nutrition is key. Below are some guidelines for assessing your feline and canine cases and implementing a feeding plan.



### STEPS TO ESTABLISHING A FEEDING PROTOCOL

1

#### CALCULATE DAILY RESTING ENERGY REQUIREMENTS (RER) DURING HOSPITALISATION

**for adult dogs/cats: RER (Resting Energy Requirements)**

- $RER \text{ (in kcal)} = 70 \times (\text{body weight in kg})^{0.75}$

2

#### ASSESS INDICATIONS FOR ASSISTED FEEDING FOR PATIENTS IN ADVANCED STAGES OF CHRONIC RENAL INSUFFICIENCY

- Anorexia  $\geq 3$  days and/or hyporexia (consumption  $\leq 80\%$  RER)  $\geq 5$  days
- Inability to eat [e.g. jaw fractures, neuro cases]

### CHOOSE A TUBE

3

<b>Nasoesophageal/ Nasogastric tubes</b>	Short term ( $<5$ days)	Inexpensive Easy to place No general anaesthesia required	Requires a completely liquid diet, limiting choice. Some animals will not eat with these tubes in place.
<b>Oesophagostomy tubes</b>	Long term	Inexpensive Easy to place Can use calorically dense diets	Requires general anaesthesia for placement. Cellulitis and infection can develop at the stoma site

### REFEEDING SCHEDULE

4

Anorexia duration	Recommendation	Application*
No anorexia	Assess tolerance 1st day	D1: 1/2 RER; D2: RER
Anorexia $<3$ days	Reach RER over 3 days	D1: 1/3 RER; D2: 2/3 RER, D3: RER
Anorexia $\geq 3$ days	Reach RER over 5 days	D1: 1/4 RER; D2: 1/2 RER, D3: 2/3 RER, D4: 3/4 RER, D5: RER

\* To be adjusted according to the patient's tolerance

### ENCOURAGING SPONTANEOUS FEEDING

- Offer the patient its usual food (in a familiar format)
- Warm food to enhance flavours
- Avoid medications in food or painful procedures (to avoid food aversion)
- Weigh food before and after meals to check calorie consumption (goal:  $\geq$  RER if not combined with tube feeding)

### TUBE FEEDING TOP TIPS

- Check tube placement prior to use\*\*
- Warm all food to room or body temperature prior to use
- Administer the feed over 15-20 minutes. Stop feeding if the patient begins to retch, vomit or regurgitate and reassess
- Flush the tube before and after feeding with warm water to clear the tube of any food. Recap the tube securely
- Tube blockage – instill 5-20mls of carbonated drink and leave for 1-2 hours to dissolve blockage. If the blockage is still present, the tube position may need to be checked

\*\* Check tube position prior to use; use the lines on the tube to detect a possible migration. For naso-oesophageal tubes and oesophagostomy tubes, the following may help ensuring the right position of the tube:

- Instill 2-5mls of sterile saline solution – no cough response should be seen
- Aspirate the tube using an empty syringe – a vacuum should be present
- Radiography

Check the stoma site for signs of pain, swelling or discharge. This should be done at each feed.



# REFEEDING SCHEDULES ACCORDING TO ANOREXIA DURATION

		ANOREXIA < 3 DAYS					
		Day 1 1/3 RER		Day 2 2/3 RER		Day 3 100% RER	
BW (kg)	RER (kcal)	Daily volume (ml) to split in ≥ 4 meals		Daily volume (ml) to split in ≥ 4 meals		Daily volume (ml) to split in ≥ 4 meals	
		1 kcal/ml	1.5 kcal/ml	1 kcal/ml	1.5 kcal/ml	1 kcal/ml	1.5 kcal/ml
2	118	39	26	78	52	118	78
2.5	139	46	31	93	62	139	93
3	160	53	35	106	71	160	106
3.5	179	60	40	119	80	179	119
4	198	66	44	132	88	198	132
4.5	216	72	48	144	96	216	144
5	234	78	52	156	104	234	156
5.5	251	84	56	168	112	251	168
6	268	89	60	179	119	268	179
6.5	285	95	63	190	127	285	190
7	301	100	67	201	134	301	201
7.5	317	106	70	211	141	317	211
8	333	111	74	222	148	333	222
9	364	121	81	242	162	364	242
10	394	131	87	262	175	394	262
11	423	141	94	282	188	423	282
12	451	150	100	301	201	451	301
13	479	160	106	319	213	479	319
14	507	169	113	338	225	507	338
15	534	178	119	356	237	534	356
16	560	187	124	373	249	560	373
17	586	195	130	391	260	586	391
18	612	204	136	408	272	612	408
19	637	212	142	425	283	637	425
20	662	221	147	441	294	662	441
25	783	261	174	522	348	783	522
30	897	299	199	598	399	897	598
35	1007	336	224	672	448	1007	672
40	1113	371	247	742	495	1113	742
45	1216	405	270	811	541	1216	811
50	1316	439	292	877	585	1316	877

ANOREXIA ≥ 3 DAYS											
		Day 1 1/4 RER		Day 2 1/2 RER		Day 3 2/3 RER		Day 4 3/4 RER		Day 5 100% RER	
		Daily volume (ml) to split in ≥ 4 meals		Daily volume (ml) to split in ≥ 4 meals		Daily volume (ml) to split in ≥ 4 meals		Daily volume (ml) to split in ≥ 4 meals		Daily volume (ml) to split in ≥ 4 meals	
		1 kcal/ml	1.5 kcal/ml	1 kcal/ml	1.5 kcal/ml	1 kcal/ml	1.5 kcal/ml	1 kcal/ml	1.5 kcal/ml	1 kcal/ml	1.5 kcal/ml
29	20	59	39	78	52	88	59	118	78		
35	23	70	46	93	62	104	70	139	93		
40	27	80	53	106	71	120	80	160	106		
45	30	90	60	119	80	134	90	179	119		
49	33	99	66	132	88	148	99	198	132		
54	36	108	72	144	96	162	108	216	144		
59	39	117	78	156	104	176	117	234	156		
63	42	126	84	168	112	189	126	251	168		
67	45	134	89	179	119	201	134	268	179		
71	47	142	95	190	127	214	142	285	190		
75	50	151	100	201	134	226	151	301	201		
79	53	159	106	211	141	238	159	317	211		
83	55	166	111	222	148	250	166	333	222		
91	61	182	121	242	162	273	182	364	242		
98	66	197	131	262	175	295	197	394	262		
106	70	211	141	282	188	317	211	423	282		
113	75	226	150	301	201	338	226	451	301		
120	80	240	160	319	213	359	240	479	319		
127	84	253	169	338	225	380	253	507	338		
133	89	267	178	356	237	400	267	534	356		
140	93	280	187	373	249	420	280	560	373		
147	98	293	195	391	260	440	293	586	391		
153	102	306	204	408	272	459	306	612	408		
159	106	319	212	425	283	478	319	637	425		
166	110	331	221	441	294	497	331	662	441		
196	130	391	261	522	348	587	391	783	522		
224	150	449	299	598	399	673	449	897	598		
252	168	504	336	672	448	755	504	1007	672		
278	186	557	371	742	495	835	557	1113	742		
304	203	608	405	811	541	912	608	1216	811		
329	219	658	439	877	585	987	658	1316	877		









[WWW.ROYALCANIN.COM/UK](http://WWW.ROYALCANIN.COM/UK)

**NUTRITIONAL HELPLINE**

+44(0)800 717800

(IRE) 01800 936074