





SATIETY
WEIGHT MANAGEMENT

DIABETIC

URINARY + SATIETY



SATIETY
WEIGHT MANAGEMENT

SATIETY
WEIGHT MANAGEMENT

SMALL DOGS **S**

DIABETIC

DIABETIC SPECIAL
LOW CARBOHYDRATE

URINARY + SATIETY

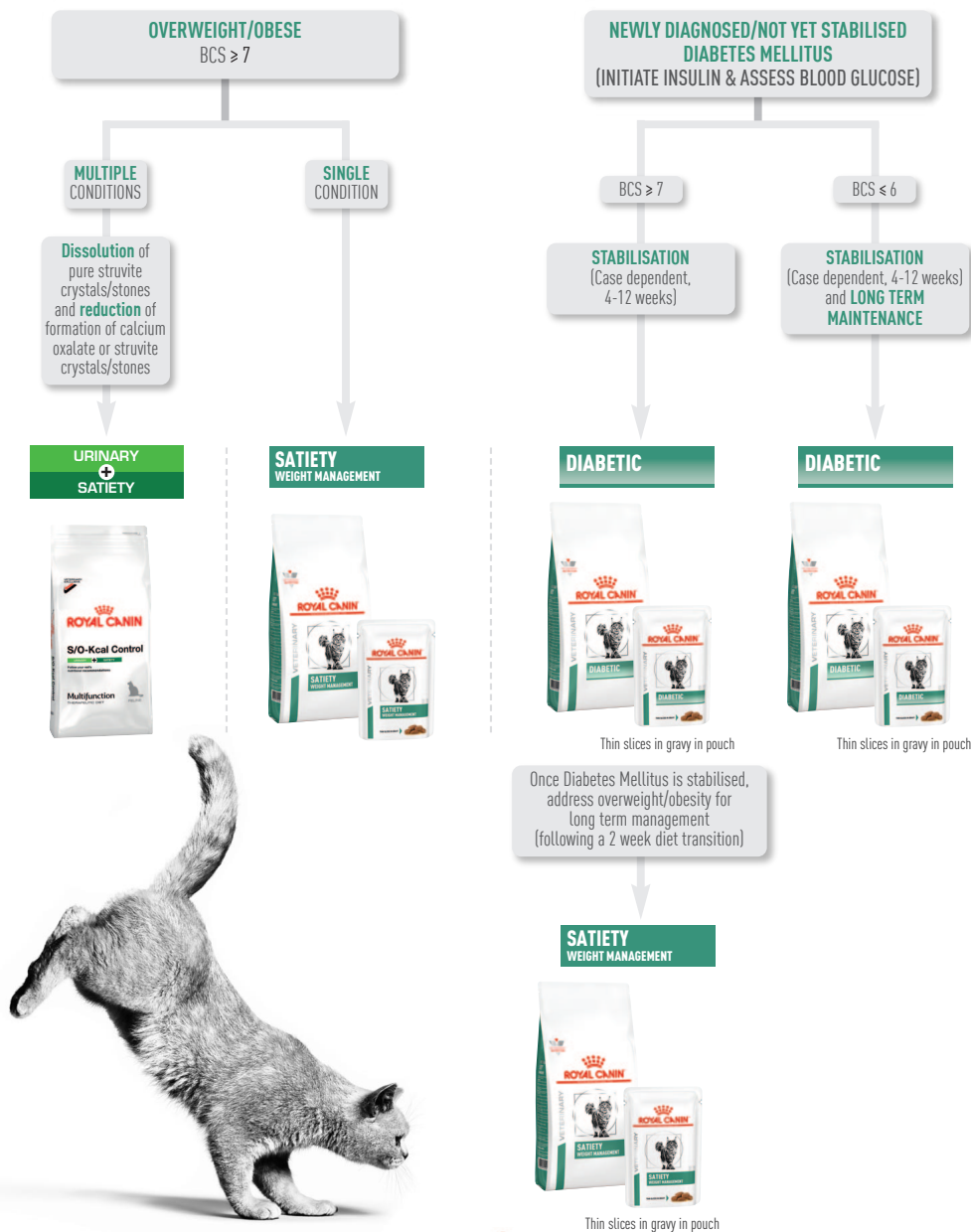
MOBILITY C2P + SATIETY

This resource has been produced with the greatest care and incorporates the most up-to-date scientific information and research findings. We recommend that you refer to our packaging as the primary reference for product information as this can change with time. Bearing in mind the diversity and complexity of clinical cases in dogs and cats, it is important to note that the suggestions in this resource for further tests and therapeutic options cannot be exhaustive. Under no circumstances should the treatments and dietary solutions suggested here replace examination by a veterinary surgeon.

The publishers and the authors will accept no responsibility for the failure of any of the treatments or nutritional solutions put forward in this resource. Not for use in Canada and in USA.

While the information is considered to be true and correct at the date of publication (**December 2020**), changes in circumstances after the time of publication may impact on the accuracy of the information.

FELINE NUTRITIONAL MANAGEMENT DECISION TREE



SATIETY WEIGHT MANAGEMENT



Available in
1.5, 3.5 and
6kg bags

RECOMMENDED DAILY INTAKE & FEEDING DURATION

ADULT CAT	IDEAL WEIGHT (kg)	STAGE		
		START	IF NO LOSS AFTER 4 WEEKS*	SUGGESTED DAILY INTAKE AFTER WEIGHT LOSS
		grams	grams	grams
	2	29	23	30
	2.5	33	27	35
	3	38	30	40
	3.5	42	34	45
	4	47	37	49
	4.5	51	40	54
	5	55	43	58
	5.5	59	46	62
	6	62	49	66
	6.5	66	52	70
	7	70	55	73
	7.5	73	58	77
	8	76	61	81

*Review the weight loss plan including: BCS, ideal weight, feeding volume and measuring before making any adjustments.

IDEAL WEIGHT should be determined according to weight and BCS of the individual. The recommended daily intake is based on the pet's ideal weight. The starting ration may need to be adjusted during follow up visits. The optimal weight loss rate is 0.5-2% bodyweight per week.

Maintenance Ration: Energy requirements to maintain stable body weight after weight loss are lower than those of cats that have never been obese. It is recommended to continue feeding the weight loss diet once ideal or target weight has been achieved.

To maintain ideal weight, gradually increase the daily food intake until weight has stabilised.

Maintenance rations may need to be adjusted based on the individual. If the cat regains more than 5% of body weight, the ration should be decreased to weight loss rations.

It is recommended to use digital food scales for measuring daily food allowance and divide the daily food intake into a minimum of 3 meals.

**Flanagan J et al. An international multi-centre cohort study of weight loss in overweight cats: Differences in outcome in different geographical locations. PLoS One. 2018 Jul 25;13(7):e0200414.

WEIGHT MANAGEMENT

RECOMMENDED FOR WEIGHT LOSS AND MAINTENANCE AFTER WEIGHT LOSS IN CASE OF

- Overweight/Obesity
- Stabilised Diabetes Mellitus with overweight/obesity
- Hyperlipidemia with overweight/obesity

NOT RECOMMENDED IN CASE OF

- Cats with a history of constipation in response to a high fibre diet
- Growth, gestation/lactation



EFFECTIVE WEIGHT MANAGEMENT

An adapted macronutrient profile helps provide safe weight loss and helps avoid weight regain. 97% of cats lost weight in 3 months**.



BEGGING CONTROL

High natural fibre level helps keep cats satisfied between meals. Helped control begging in 82% of cats during weight loss**.



MUSCLE MASS MAINTENANCE

High protein content helps support healthy weight loss while maintaining muscle mass.

KEY VALUES	Per 1000 kcal	Per 100g as fed
Protein	111.84g	34.0g
Fat content	29.61g	9.0g
Digestible Carbohydrates (starch)	61.18g	18.6g
NFE	93.09g	28.3g
Crude fibre	48.03g	14.6g
Dietary fibre	79.93g	24.3g
Omega 6	6.09g	1.85g
Omega 3	1.55g	0.47g
EPA + DHA	0.66g	0.20g
Calcium	4.44g	1.35g
Phosphorus	3.72g	1.13g
Sodium	1.81g	0.55g
Crude Ash	28.29g	8.6g
L-Carnitine	65.8mg	20mg
Glucosamine/Chondroitin	164.47mg	50mg

Metabolisable energy*** 304kcal/100g as fed

***Calculated according to NRC2006TDF.

[S/O] INDEX This product creates a urinary environment unfavourable to the formation of struvite and calcium oxalate stones.

COMPOSITION

Dehydrated poultry protein, vegetable fibres, tapioca, wheat flour, hydrolysed animal proteins, wheat gluten****, maize gluten, animal fats, chicory pulp, minerals, psyllium husks and seeds, fish oil, marigold extract (source of lutein), glucosamine, hydrolysed cartilage (source of chondroitin).

**** L.I.P.: protein selected for its very high digestibility.

ADDITIVES (KG)*****

Nutritional additives: Vitamin A: 25000IU, Vitamin D3: 1000IU, Iron [3b103]: 33mg, Iodine [3b201, 3b202]: 3.3mg, Copper [3b405, 3b406]: 10mg, Manganese [3b502, 3b504]: 43mg, Zinc [3b603, 3b605, 3b606]: 133mg, Selenium [3b801, 3b811, 3b812]: 0.05mg - Preservatives - Antioxidants.

***** Values reflect only levels added to the formula, not those naturally occurring in components of the diet.

SATIETY WEIGHT MANAGEMENT



THIN SLICES IN GRAVY

Available in box of 12 pouches of 85g

RECOMMENDED DAILY INTAKE & FEEDING DURATION

	IDEAL WEIGHT (kg)	STAGE					
		START		IF NO LOSS AFTER 4 WEEKS*		SUGGESTED DAILY INTAKE AFTER WEIGHT LOSS	
		grams	pouch	grams	pouch	grams	pouch
ADULT CAT	2	130	1 ½	105	1	140	1 ½
	2.5	155	2	120	1 ½	165	2
	3	175	2	140	1 ½	185	2
	3.5	195	2 ½	155	2	205	2 ½
	4	215	2 ½	170	2	225	2 ½
	4.5	235	3	185	2	245	3
	5	250	3	200	2 ½	265	3
	5.5	270	3	215	2 ½	285	3 ½
	6	285	3 ½	225	2 ½	305	3 ½
	6.5	305	3 ½	240	3	320	4
	7	320	4	255	3	340	4
	7.5	335	4	265	3	355	4
	8	350	4	280	3 ½	370	4 ½

*Review the weight loss plan including: BCS, ideal weight, feeding volume and measuring before making any adjustments.

IDEAL WEIGHT should be determined according to weight and BCS of the individual. The recommended daily intake is based on the pet's ideal weight. The starting ration may need to be adjusted during follow up visits. The optimal weight loss rate is 0.5-2% bodyweight per week.

Maintenance Ration: Energy requirements to maintain stable body weight after weight loss are lower than those of cats that have never been obese. It is recommended to continue feeding the weight loss diet once ideal or target weight has been achieved.

To maintain ideal weight, gradually increase the daily food intake until weight has stabilised.

Maintenance rations may need to be adjusted based on the individual. If the cat regains more than 5% of body weight, the ration should be decreased to weight loss rations.

It is recommended to divide the daily food intake into a minimum of 3 meals.

WEIGHT MANAGEMENT

RECOMMENDED FOR WEIGHT LOSS AND MAINTENANCE AFTER WEIGHT LOSS IN CASE OF

- Overweight/Obesity
- Stabilised Diabetes Mellitus with overweight/obesity
- Hyperlipidemia with overweight/obesity

NOT RECOMMENDED IN CASE OF

- Growth, gestation/lactation



EFFECTIVE WEIGHT MANAGEMENT

An adapted macronutrient profile helps provide safe weight loss and avoid weight regain.



BEGGING CONTROL

Nutritional profile that helps keep cats satisfied between meals.



MUSCLE MASS MAINTENANCE

High protein content helps support healthy weight loss while maintaining muscle mass.

KEY VALUES	Per 1000 kcal	Per 100g as fed
Protein	113.64g	7.5g
Fat content	33.33g	2.2g
Digestible Carbohydrates (starch)	33.33g	2.2g
NFE	50.00g	3.3g
Crude fibre	19.70g	1.3g
Dietary fibre	22.73g	1.5g
Omega 6	7.58g	0.50g
Omega 3	0.76g	0.05g
EPA + DHA	0.06g	0.004g
Calcium	4.09g	0.27g
Phosphorus	3.33g	0.22g
Sodium	2.42g	0.16g
Crude Ash	25.76g	1.7g
L-Carnitine	48.48mg	3.2mg
Glucosamine/Chondroitin	113.64mg	7.5mg
Moisture	1272.7g	84g

Metabolisable energy** 66kcal/100g as fed

**Calculated according to NRC2006TDF.



This product creates a urinary environment unfavourable to the formation of struvite and calcium oxalate stones.

COMPOSITION

Poultry by-products, pork by-products, rice flour, pork blood products, powdered cellulose, dried albumen, minerals, caramelised sugars, marigold extract (source of lutein), hydrolysed crustaceans (source of glucosamine), hydrolysed cartilage (source of chondroitin).

ADDITIVES (KG)***

Nutritional additives: Vitamin D3: 235IU, Iron (3b103): 7mg, Iodine (3b202): 0.23mg, Copper (3b405, 3b406): 1.9mg, Manganese (3b502, 3b503, 3b504): 2mg, Zinc (3b603, 3b605, 3b606): 20mg.

*** Values reflect only levels added to the formula, not those naturally occurring in components of the diet.

DIABETIC



Available in 1.5 and 3.5kg bags

RECOMMENDED DAILY INTAKE & FEEDING DURATION

	CAT'S WEIGHT (kg)	BODY CONDITION					
		THIN		NORMAL		OVERWEIGHT	
		grams	cups	grams	cups	grams	cups
ADULT CAT	2	40	4/8	33	3/8	26	2/8
	2.5	46	4/8	39	3/8	31	3/8
	3	53	5/8	44	4/8	35	3/8
	3.5	59	5/8	49	4/8	39	3/8
	4	65	6/8	54	5/8	43	4/8
	4.5	70	6/8	59	5/8	47	4/8
	5	76	7/8	63	6/8	51	4/8
	5.5	81	7/8	68	6/8	54	5/8
	6	86	1	72	6/8	58	5/8
	6.5	91	1	76	7/8	61	5/8
	7	96	1	80	7/8	64	6/8
	7.5	101	1 + 1/8	84	7/8	67	6/8
	8	106	1 + 1/8	88	1	71	6/8
	8.5	111	1 + 2/8	92	1	74	6/8
	9	115	1 + 2/8	96	1	77	7/8
	9.5	120	1 + 3/8	100	1 + 1/8	80	7/8
	10	124	1 + 3/8	104	1 + 1/8	83	7/8

*DIABETIC is recommended as first line nutritional management for all newly diagnosed cases of Diabetes Mellitus until control of clinical signs and hyperglycemia have been achieved.

NOTE: the use of this food may affect the cat's sensitivity to insulin. It is highly recommended that blood glucose and insulin response are monitored when starting the diet so that insulin dosage can be adapted. Once glycemic control is reached, nutritional management should be guided by assessment of the Body Condition Score.

BCS 6 or less: continue DIABETIC

BCS 7-8-9: transition to SATIETY WEIGHT MANAGEMENT

It is highly recommended that blood glucose and insulin response are monitored when starting or changing the diet so that insulin dosage can be adapted.

It is recommended to use digital food scales for measuring daily food allowance.

DIABETIC MELLITUS

RECOMMENDED FOR CASES OF

- Diabetes Mellitus and a Body Condition Score (BCS) < 6/9
- Diabetes Mellitus and a BCS > 7/9, until glycemic control has been achieved*

NOT RECOMMENDED IN CASE OF

- Growth, gestation/lactation



GLUCOMODULATION

Specific formula utilising cereals with a low glycaemic index and selected fibres to help in the management of post-prandial blood glucose in diabetic cats.



HIGH PROTEIN

Helps reduce net energy supply and support the maintenance of muscle mass essential in diabetic cats.



LOW STARCH

Formula contains a reduced level of starch to help limit post prandial blood glucose.

KEY VALUES	Per 1000 kcal	Per 100g as fed
Protein	119.42g	46g
Fat content	31.15g	12.0g
Digestible Carbohydrates (starch)	48.81g	18.8g
NFE	66.28g	26.3g
Crude fibre	9.87g	3.8g
Dietary fibre	29.34g	11.3g
Omega 6	7.14g	2.75g
Omega 3	1.87g	0.72g
EPA + DHA	0.78g	0.30g
Calcium	2.39g	0.92g
Phosphorus	2.36g	0.91g
Sodium	1.04g	0.40g
Arginine	7.09mg	2.73g
Crude Ash	16.61g	6.4g
Essential Fatty Acids	7.47g	2.88g
L-Carnitine	51.92mg	20mg
Total Sugars	3.89g	1.5g

Metabolisable energy** 385kcal/100g as fed

**Calculated according to NRC2006CF.



This product creates a urinary environment unfavourable to the formation of struvite and calcium oxalate stones.

COMPOSITION

Dehydrated poultry protein, barley, wheat gluten***, maize gluten, soya protein isolate***, tapioca, animal fats, hydrolysed animal proteins, vegetable fibres, chicory pulp, minerals, fish oil, psyllium husks and seeds, fructo-oligo-saccharides, soya oil, marigold extract (source of lutein). Sources of carbohydrates: barley, tapioca.

*** L.I.P.: protein selected for its very high digestibility.

ADDITIVES (KG)****

Nutritional additives: Vitamin A: 25000IU, Vitamin D3: 1000IU, Iron (3b103): 33mg, Iodine (3b201, 3b202): 3.3mg, Copper (3b405, 3b406): 10mg, Manganese (3b502, 3b504): 43mg, Zinc (3b603, 3b605, 3b606): 130mg, Selenium (3b801, 3b811, 3b812): 0.05mg - Preservatives - Antioxidants.

**** Values reflect only levels added to the formula, not those naturally occurring in components of the diet.

DIABETIC



THIN SLICES IN GRAVY

Available in box
of 12 pouches
of 85g

RECOMMENDED DAILY INTAKE & FEEDING DURATION

ADULT CAT	CAT'S WEIGHT (kg)	BODY CONDITION					
		THIN		NORMAL		OVERWEIGHT	
		grams	pouch	grams	pouch	grams	pouch
	2	195	2 + 1/2	165	2	130	1 + 1/2
	2.5	230	2 + 1/2	190	2	155	2
	3	260	3	220	2 + 1/2	175	2
	3.5	290	3 + 1/2	245	3	195	2 + 1/2
	4	320	4	270	3	215	2 + 1/2
	4.5	350	4	290	3 + 1/2	235	3
	5	375	4 + 1/2	315	3 + 1/2	250	3
	5.5	405	5	335	4	270	3
	6	430	5	355	4	285	3 + 1/2
	6.5	455	5 + 1/2	380	4 + 1/2	300	3 + 1/2
	7	480	5 + 1/2	400	4 + 1/2	320	4
	7.5	500	6	420	5	335	4
	8	525	6	440	5	350	4
	8.5	550	6 + 1/2	460	5 + 1/2	365	4 + 1/2
	9	570	6 + 1/2	475	5 + 1/2	380	4 + 1/2
	9.5	595	7	495	6	395	4 + 1/2
	10	615	7	515	6	410	5

*DIABETIC is recommended as first line nutritional management for all newly diagnosed cases of Diabetes Mellitus until control of clinical signs and hyperglycemia have been achieved.

NOTE: the use of this food may affect the cat's sensitivity to insulin. It is highly recommended that blood glucose and insulin response are monitored when starting the diet so that insulin dosage can be adapted. Once glycemic control is reached, nutritional management should be guided by assessment of the Body Condition Score.

BCS 6 or less: continue DIABETIC

BCS 7-8-9: transition to SATIETY WEIGHT MANAGEMENT

It is highly recommended that blood glucose and insulin response are monitored when starting or changing the diet so that insulin dosage can be adapted.

It is recommended to divide the daily food intake into a minimum of 3 meals.

DIABETIC MELLITUS

RECOMMENDED FOR CASES OF

- Diabetes Mellitus and a Body Condition Score (BCS) < 6/9
- Diabetes Mellitus and a BCS > 7/9, until glycemic control has been achieved*

NOT RECOMMENDED IN CASE OF

- Growth, gestation/lactation



GLUCOMODULATION

Specific formula utilising cereals with a low glycaemic index and selected fibres to help in the management of post-prandial blood glucose in diabetic cats.



HIGH PROTEIN

Helps reduce net energy supply and maintenance of muscle mass essential in diabetic cats.



LOW STARCH

Formula that contains a reduced level of starch to help limit postprandial blood glucose.

KEY VALUES	Per 1000 kcal	Per 100g as fed
Protein	114.69g	8.9g
Fat content	41.24g	3.2g
Digestible Carbohydrates (starch)	15.46g	1.2g
NFE	36.08	2.8g
Crude fibre	14.18g	1.1g
Dietary fibre	19.33g	1.5g
Omega 6	7.73g	0.60g
Omega 3	2.19g	0.17g
EPA + DHA	1.38g	0.11g
Calcium	3.74g	0.29g
Phosphorus	2.71g	0.21g
Sodium	2.06g	0.16g
Arginine	7.09mg	0.55g
Crude Ash	21.91g	1.7g
Essential Fatty Acids	7.5g	0.54g
L-Carnitine	15.46mg	1.2mg
Total Sugars	18g	1.3g
Moisture	1063.14g	82.5g

Metabolisable energy** 78kcal/100g as fed

**Calculated according to NRC2006 TDF.



This product creates a urinary environment unfavourable to the formation of struvite and calcium oxalate stones.

COMPOSITION

Poultry by-products, pork by-products, pork blood products, modified maize starch, hydrolysed pork gelatin, powdered cellulose, minerals, fish oil, marigold extract (source of lutein).

ADDITIVES (KG)***

Nutritional additives: Vitamin D3: 270IU, Iron (3b103): 3mg, Iodine (3b201, 3b202): 0.4mg, Copper (3b405, 3b406): 3mg, Manganese (3b502, 3b504): 0.8mg, Zinc (3b603, 3b605, 3b606): 8mg - Technological additives: Clinoptilolite of sedimentary origin: 1g.

*** Values reflect only levels added to the formula, not those naturally occurring in components of the diet.

URINARY



SATIETY



Available in
1.5 and 3.5kg bags

RECOMMENDED DAILY INTAKE & FEEDING DURATION

ADULT CAT	TARGET BODY WEIGHT OF CAT	START				AFTER 4 WEEKS WITH NO WEIGHT LOSS	
		grams		cups		grams	
		grams	cups	grams	cups	grams	cups
	2	28	3/8	23	2/8		
	2.5	33	3/8	26	3/8		
	3	38	4/8	30	3/8		
	3.5	42	4/8	34	3/8		
	4	47	5/8	37	4/8		
	4.5	51	5/8	40	4/8		
	5	55	5/8	43	4/8		
	5.5	58	6/8	46	5/8		
	6	62	6/8	49	5/8		
	6.5	66	6/8	52	5/8		
	7	69	7/8	55	5/8		
	7.5	73	7/8	58	6/8		
	8	76	7/8	60	6/8		
	8.5	80	1	63	6/8		
	9	83	1	66	6/8		
	9.5	86	1	68	7/8		
	10	89	1 1/8	71	7/8		

For nutritional management of cats with struvite urolithiasis and excessive bodyweight: feed the diet for 5-12 weeks and re-evaluate based on clinical assessment of the response. To avoid recurrence of struvite uroliths, the diet should be fed for a further 6 months minimum followed by urinalysis. For detailed guidance on weight reduction please see product information for Satiety Feline. S/O-Kcal Control Feline can be maintained for the cat's lifetime. It is recommended to divide the daily intake into 2 meals.

RECOMMENDATIONS: Target Weight should be determined according to Body Condition Score of the individual. The optimal weight loss rate is 0.5-2% bodyweight weekly. Maintenance Ration: It is recommended to continue feeding the weight-loss diet once target weight is achieved. Energy intakes should be gradually increased until weight has stabilised. Should the cat regain more than 5% of body weight, the daily ration should be decreased to weight loss levels. It is recommended to use digital food scales for measuring daily food allowance.



This product creates a urinary environment unfavourable to the formation of struvite and calcium oxalate stones.

RECOMMENDED FOR CASES OF

Feline lower urinary tract disease: • Dissolution of struvite uroliths • Management of recurrent struvite and calcium oxalate urolithiasis. In older cats, renal function should be checked before S/O-Kcal Control Feline is recommended.

+ Weight Management: Obesity • Diabetes mellitus associated with obesity

NOT RECOMMENDED IN CASE OF

- Pregnancy, lactation, growth • Chronic diseases requiring an increased energy intake • Chronic Kidney Disease
- Heart disease (where sodium restriction is required)
- Concurrent use of urine-acidifying drugs • Conditions where high fibre content is not recommended



SATIETOGENIC EFFECT

Contains a special blend of fibres which have a satiating effect on cats.



HIGH PROTEIN

A high protein content (111 g/1000 kcal ME) helps maintain muscle mass throughout the weight loss period.



URINE DILUTION

Urine dilution makes the urine less liable to form struvite and calcium oxalate stones.



LOW RSS

Helps lower the concentration of ions contributing to struvite and calcium oxalate crystal formation.

KEY VALUES	Per 100g as fed
Protein	34g
Fat content	9g
Carbohydrate	18.4g
NFE	27.9g
Dietary fibre	23.5g
Crude fibre	14g
Omega 6	1.89mg
Omega 3	0.37mg
EPA+DHA	0.14g
Calcium	1.26g
Phosphorus	1.15g
Sodium	1.1g
L-Carnitine	20mg
Chondroitin sulphate + Glucosamine	50mg

Metabolisable energy* 304.6kcal

*Calculated according to NRC2006 TDF.

COMPOSITION

Dehydrated poultry protein, vegetable fibres, tapioca, wheat gluten**, maize gluten, wheat flour, hydrolysed animal proteins, minerals, animal fats, chicory pulp, fish oil, psyllium husks and seeds, hydrolysed crustaceans (source of glucosamine), hydrolysed cartilage (source of chondroitin).

*** Values reflect only levels added to the formula, not those

ADDITIVES (KG)***

Nutritional additives: Vitamin A: 23800IU, Vitamin D3: 900IU, E1 (Iron): 29mg, E2 (Iodine): 2.9mg, E4 (Copper): 9mg, E5 (Manganese): 37mg, E6 (Zinc): 112mg, E8 (Selenium): 0.04mg Preservatives - Antioxidants.

*** Values reflect only levels added to the formula, not those naturally occurring in components of the diet.



CATS MIX FEEDING GUIDELINES

24H

MIX: SATIETY CAT DRY + SATIETY CAT WET POUCH

IDEAL WEIGHT (kg)	POUCH	STAGE		
		START	IF NO LOSS AFTER 4 WEEKS*	SUGGESTED DAILY INTAKE AFTER WEIGHT LOSS
		DRY (g)	DRY (g)	DRY (g)
2	1+	10	5	13
3	1+	20	13	24
4	1+	28	21	34
5	1+	36	28	43
6	1+	44	35	52
7	1+	51	41	61
8	1+	58	47	69

*Review the weight loss plan including: BCS, ideal weight, feeding volume and measuring before making any adjustments.



24H

MIX: DIABETIC CAT DRY + DIABETIC CAT WET POUCH

CAT'S WEIGHT (kg)	POUCH	BODY CONDITION					
		THIN		NORMAL		OVERWEIGHT	
		DRY (g)	DRY (240cm²)	DRY (g)	DRY (240cm²)	DRY (g)	DRY (240cm²)
2	1+	23	2/8	17	1/8	9	1/8
3	1+	38	3/8	29	3/8	18	2/8
4	1+	51	4/8	40	3/8	26	2/8
5	1+	64	6/8	50	4/8	33	3/8
6	1+	75	6/8	60	5/8	40	4/8
7	1+	87	7/8	70	6/8	47	4/8
8	1+	98	1	79	7/8	53	5/8
9	1+	108	1 + 2/8	88	1	60	5/8
10	1+	119	1 + 2/8	96	1	66	6/8



WEIGHT MANAGEMENT CALCULATIONS

HOW TO CALCULATE IDEAL BODY WEIGHT

BODY CONDITION SCORE	VARIATION FROM IDEAL BODY WEIGHT	CALCULATION
5	100% Ideal body weight	Ideal body weight
6	10% Overweight	$\frac{\text{Current body weight}}{1.1}$
7	20% Overweight	$\frac{\text{Current body weight}}{1.2}$
8	30% Overweight	$\frac{\text{Current body weight}}{1.3}$
9	40% Overweight	$\frac{\text{Current body weight}}{1.4}$

CALCULATING PERCENTAGE WEIGHT LOSS

1

$$\frac{\text{Weight lost}}{\text{Body weight at last weigh-in}} \times 100$$


2


Example:
33.6kg dog lost 0.9kg

$$\frac{0.9}{33.6} \times 100 = 2.7\%$$

Divide by number of weeks on diet to get average weight loss per week

3

 Safe weight loss:-
Dogs = 1-3% per week*

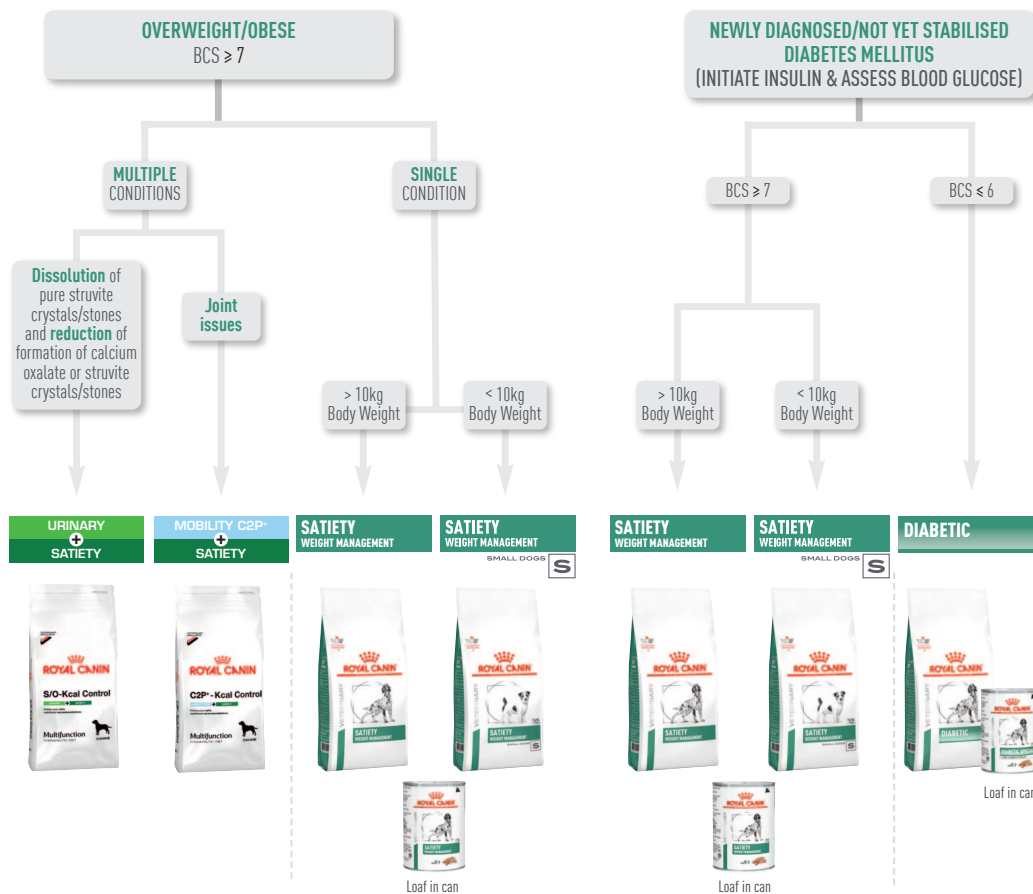
 Cats = 0.5-2% per week

Average weight loss for cats and dogs is 0.8% per week.

*for the first 12 weeks



CANINE NUTRITIONAL MANAGEMENT DECISION TREE



Please note: If patients lose too much weight or struggle to stabilise, a transition to **DIABETIC** is recommended.

SATIETY WEIGHT MANAGEMENT



Available in
**1.5, 6 and
12kg bags**

RECOMMENDED DAILY INTAKE & FEEDING DURATION

	DOGS WEIGHT (kg)*	STAGE		
		START	IF NO LOSS AFTER 4 WEEKS**	SUGGESTED DAILY INTAKE AFTER WEIGHT LOSS
		grams	grams	grams
ADULT DOG	10	148	126	139
	12	169	145	159
	14	190	163	179
	16	210	180	198
	18	229	197	216
	20	248	213	234
	25	293	251	277
	30	336	288	317
	35	378	324	356
	40	417	358	393
	45	456	391	430
	50	493	423	465
	55	530	454	500
	60	566	485	533
	70	635	544	599
	80	702	602	662
	90	767	657	723

*For dogs less than 10kg it is recommended to use Satiety Small Dog

**Review the weight loss plan including: BCS, ideal weight, feeding volume and measuring before making any adjustments.

IDEAL WEIGHT should be determined according to weight and BCS of the individual. The recommended daily intake is based on the pet's ideal weight. The starting ration may need to be adjusted during follow up visits. An objective of losing 1-3% bodyweight per week is generally achievable over the first 3 months, and of 0.5-2% afterwards.

Maintenance Ration: Energy requirements to maintain stable body weight after weight loss are lower than those of dogs that have never been obese. It is recommended to continue feeding the weight loss diet once ideal or target weight has been achieved. To maintain ideal weight, gradually increase the daily food intake until weight has stabilised. Maintenance rations may need to be adjusted based on the individual. If the dog regains more than 5% of body weight, the ration should be decreased to weight loss rations.

It is recommended to use digital food scales for measuring daily food allowance and divide the daily food intake into a minimum of 2 meals.

NOTE: maintenance rations may need to be adjusted based on individual evolution. German AJ et al. Low-maintenance energy requirements of obese dogs after weight loss. British Journal of Nutrition (2011), 106, S93-S96.

WEIGHT MANAGEMENT

RECOMMENDED FOR WEIGHT LOSS / MAINTENANCE AFTER WEIGHT LOSS IN CASE OF

- Overweight/Obesity
- Diabetes Mellitus with overweight/obesity
- Hyperlipidemia with overweight/obesity

NOT RECOMMENDED IN CASE OF

- Dogs with a history of constipation in response to a high fibre diet
- Growth, gestation/lactation



EFFECTIVE WEIGHT MANAGEMENT

Adapted macronutrient profile helps provide safe weight loss and helps avoid weight regain. 97% of dogs lost weight in 3 months***.



BEGGING CONTROL

High natural fibre level helps keep dogs satisfied between meals. Helped control begging in 83% of dogs during weight loss***.



MUSCLE MASS MAINTENANCE

High protein content helps support healthy weight loss while maintaining muscle mass.

***Flanagan J et al. Success of a weight loss plan for overweight dogs: the results of an international weight loss study. PLoS One 2017;12(9):e0184199.

KEY VALUES	Per 1000 kcal	Per 100g as fed
Protein	112.40g	30.0g
Fat content	35.59g	9.5g
Digestible Carbohydrates (starch)	63.34g	16.9g
NFE	105.66g	28.2g
Crude fibre	63.69g	17.0g
Dietary fibre	106.03g	28.3g
Omega 6	7.61g	2.03g
Omega 3	2.92g	0.78g
EPA + DHA	1.50g	0.40g
Calcium	3.37g	0.90g
Phosphorus	2.62g	0.70g
Sodium	1.12g	0.30g
Crude Ash	21.73g	5.8g
L-Carnitine	121.77mg	32.5mg
Glucosamine/Chondroitin	749.34mg	200mg

Metabolisable energy*** 267kcal/100g as fed

**** Calculated according to NRC2006TDF.

COMPOSITION

Vegetable fibres, dehydrated poultry protein, wheat gluten****, tapioca, maize gluten, hydrolysed animal proteins, wheat, maize, animal fats, beet pulp, fish oil, minerals, psyllium husks and seeds, soya oil, fructo-oligo-saccharides, glucosamine, marigold extract (source of lutein), hydrolysed cartilage (source of chondroitin).

***** L.I.P.: protein selected for its very high digestibility.

ADDITIVES (KG)*****

Nutritional additives: Vitamin A: 19000 IU, Vitamin D3: 1000 IU, Iron [3b103]: 35 mg, Iodine [3b201, 3b202]: 3.5 mg, Copper [3b405, 3b406]: 11 mg, Manganese [3b502, 3b504]: 46 mg, Zinc [3b603, 3b605, 3b606]: 137 mg, Selenium [3b801, 3b811, 3b812]: 0.06 mg - Preservatives - Antioxidants.

***** Values reflect only levels added to the formula, not those naturally occurring in components of the diet.



SATIETY WEIGHT MANAGEMENT



LOAF

Available in
410g can

RECOMMENDED DAILY INTAKE & FEEDING DURATION BASED ON 410G

ADULT DOG	IDEAL WEIGHT (kg)	STAGE					
		START		IF NO LOSS AFTER 4 WEEKS*		SUGGESTED DAILY FOOD INTAKE AFTER WEIGHT LOSS	
		grams	can 410g	grams	can 410g	grams	can 410g
2	191	2/4	164	2/4	180	2/4	
4	321	3/4	275	3/4	303	3/4	
6	435	1	373	1	410	1	
8	540	1 + 1/4	463	1 + 1/4	509	1 + 1/4	
10	638	1 + 2/4	547	1 + 1/4	602	1 + 2/4	
15	865	2	741	1 + 3/4	815	2	
20	1,073	2 + 2/4	920	2 + 1/4	1,012	2 + 2/4	
25	1,268	3	1,087	2 + 3/4	1,196	3	
30	1,454	3 + 2/4	1,247	3	1,371	3 + 1/4	
35	1,633	3 + 2/4	1,399	3 + 2/4	1,539	3 + 3/4	
40	1,805	4 + 2/4	1,547	3 + 3/4	1,701	4 + 1/4	
45	1,971	4 + 3/4	1,690	4	1,859	4 + 2/4	
50	2,133	5 + 1/4	1,828	4 + 2/4	2,011	5	
55	2,291	5 + 2/4	1,964	4 + 3/4	2,160	5 + 1/4	
60	2,446	6	2,096	5	2,306	5 + 2/4	

*Review the weight loss plan including: BCS, ideal weight, feeding volume and measuring before making any adjustments.

IDEAL WEIGHT should be determined according to weight and BCS of the individual. The recommended daily intake is based on the pet's ideal weight. The starting ration may need to be adjusted during follow up visits. An objective of losing 1-3% bodyweight per week is generally achievable over the first 3 months, and of 0.5-2% afterwards.

Maintenance Ration: Energy requirements to maintain stable body weight after weight loss are lower than those of dogs that have never been obese. It is recommended to continue feeding the weight loss diet once ideal or target weight has been achieved.

To maintain ideal weight, gradually increase the daily food intake until weight has stabilised.

Maintenance rations may need to be adjusted based on the individual. If the dog regains more than 5% of body weight, the ration should be decreased to weight loss rations.

WEIGHT MANAGEMENT

RECOMMENDED FOR WEIGHT LOSS / MAINTENANCE AFTER WEIGHT LOSS IN CASE OF

- Overweight/Obesity
- Diabetes Mellitus with overweight/obesity
- Hyperlipidemia with overweight/obesity

NOT RECOMMENDED IN CASE OF

- Growth, gestation/lactation



EFFECTIVE WEIGHT MANAGEMENT

Adapted macronutrient profile helps provide safe weight loss and helps avoid weight regain.



BEGGING CONTROL

Nutritional profile that helps keep dogs satisfied between meals.



MUSCLE MASS MAINTENANCE

High protein content helps support healthy weight loss while maintaining muscle mass.

KEY VALUES	Per 1000 kcal	Per 100g as fed
Protein	129.66g	8.0g
Fat content	32.41g	2.0g
Digestible Carbohydrates (starch)	38.90g	2.4g
NFE	64.83g	4.0g
Crude fibre	32.41g	2.0g
Dietary fibre	51.86g	3.2g
Omega 6	5.67g	0.35g
Omega 3	1.46g	0.09g
EPA + DHA	0.97g	0.06g
Calcium	2.27g	0.14g
Phosphorus	1.94g	0.12g
Sodium	1.94g	0.12g
Crude Ash	16.21g	1.0g
L-Carnitine	113.45mg	7mg
Glucosamine/Chondroitin	137.76mg	8.5mg
Moisture	1345.22g	83g

Metabolisable energy** 62kcal/100g as fed

**Calculated according to NRC2006TDF.



This product creates a urinary environment unfavourable to the formation of struvite and calcium oxalate stones.

COMPOSITION

Pork by-products, poultry by-products, maize flour, pork blood products, powdered cellulose, dried beet pulp, fish oil, minerals, marigold extract (source of lutein), hydrolysed crustaceans (source of glucosamine), hydrolysed cartilage (source of chondroitin).

ADDITIVES (KG)***

Nutritional additives: Vitamin D3: 290IU, Iron (3b103): 6.5mg, Iodine (3b202): 0.2mg, Copper (3b405, 3b406): 1.8mg, Manganese (3b502, 3b503, 3b504): 2mg, Zinc (3b603, 3b605, 3b606): 20mg - Technological additives: Clinoptilolite of sedimentary origin: 1g.

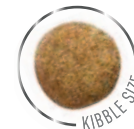
*** Values reflect only levels added to the formula, not those naturally occurring in components of the diet.

It is recommended to use digital food scales for measuring daily food allowance and divide the daily food intake into a minimum of 2 meals.

NOTE: maintenance rations may need to be adjusted based on individual evolution. German AJ et al. Low-maintenance energy requirements of obese dogs after weight loss. British Journal of Nutrition (2011), 106, S93-S96.

SATIETY WEIGHT MANAGEMENT

SMALL DOGS

Available in
1.5, 3 and
8kg bags

RECOMMENDED DAILY INTAKE & FEEDING DURATION

ADULT DOG	IDEAL WEIGHT (kg)	STAGE			
		START	IF NO LOSS AFTER 4 WEEKS*	SUGGESTED DAILY FOOD INTAKE AFTER WEIGHT LOSS	
		grams	grams	grams	
2	44	37	41		
2.5	52	44	49		
3	59	51	56		
3.5	66	57	63		
4	73	63	69		
4.5	80	69	76		
5	87	74	82		
5.5	93	80	88		
6	100	85	94		
6.5	106	91	100		
7	112	96	105		
7.5	118	101	111		
8	124	106	116		
8.5	129	111	122		
9	135	116	127		
9.5	140	120	132		
10	146	125	138		

*Review the weight loss plan including: BCS, ideal weight, feeding volume and measuring before making any adjustments.

IDEAL WEIGHT should be determined according to weight and BCS of the individual. The recommended daily intake is based on the pet's ideal weight. The starting ration may need to be adjusted during follow up visits. An objective of losing 1-3% bodyweight per week is generally achievable over the first 3 months, and of 0.5-2% afterwards.

Maintenance Ration: Energy requirements to maintain stable body weight after weight loss are lower than those of dogs that have never been obese. It is recommended to continue feeding the weight loss diet once ideal or target weight has been achieved. To maintain ideal weight, gradually increase the daily food intake until weight has stabilised. Maintenance rations may need to be adjusted based on the individual. If the dog regains more than 5% of body weight, the ration should be decreased to weight loss rations.

It is recommended to use digital food scales for measuring daily food allowance and divide the daily food intake into a minimum of 2 meals.

NOTE: maintenance rations may need to be adjusted based on individual evolution. German AJ et al. Low-maintenance energy requirements of obese dogs after weight loss. British Journal of Nutrition (2011), 106, S93-S96.

**Flanagan J et al. Success of a weight loss plan for overweight dogs: the results of an international weight loss study. PLoS One 2017;12(9):e0184199.

WEIGHT MANAGEMENT

RECOMMENDED FOR WEIGHT LOSS AND MAINTENANCE AFTER WEIGHT LOSS IN CASE OF

- Overweight/Obesity
- Diabetes Mellitus with overweight/obesity
- Hyperlipidemia with overweight/obesity

NOT RECOMMENDED IN CASE OF

- Dogs with a history of constipation in response to a high fibre diet
- Growth, gestation/lactation



EFFECTIVE WEIGHT MANAGEMENT

Adapted macronutrient profile helps provide safe weight loss and helps avoid weight regain. 97% of dogs lost weight in 3 months**.



BEGGING CONTROL

High natural fibre level helps keep dogs satisfied between meals. Helped control begging in 83% of dogs during weight loss**.



SPECIFICALLY FORMULATED FOR SMALL DOGS

Adapted formula to meet the specific digestive, dental and urinary sensitivities of small dogs.

KEY VALUES	Per 1000 kcal	Per 100g as fed
Protein	111.28g	30.0g
Fat content	35.24g	9.5g
Digestible Carbohydrates (starch)	61.94g	16.7g
NFE	106.08g	28.6g
Crude fibre	57.86g	15.6g
Dietary fibre	102.00g	27.5g
Omega 6	6.82g	1.84g
Omega 3	2.30g	0.62g
EPA + DHA	1.11g	0.30g
Calcium	3.38g	0.91g
Phosphorus	2.82g	0.76g
Sodium	2.60g	0.70g
Crude Ash	25.22g	6.8g
L-Carnitine	120.55mg	32.5mg
Glucosamine/Chondroitin	370.92mg	100mg
Magnesium	0.45g	0.12g

Metabolisable energy*** 270kcal/100g as fed

***Calculated according to NRC2006TDF.



This product creates a urinary environment unfavourable to the formation of struvite and calcium oxalate stones.

COMPOSITION

Dehydrated poultry protein, vegetable fibres, wheat gluten****, tapioca, hydrolysed animal proteins, chicory pulp, wheat, maize, maize gluten, animal fats, minerals, psyllium husks and seeds, fish oil, fatty acid salt, fructo-oligo-saccharides, marigold extract (source of lutein), hydrolysed crustaceans (source of glucosamine), hydrolysed cartilage (source of chondroitin).

**** L.I.P.: protein selected for its very high digestibility.

ADDITIVES (KG)*****

Nutritional additives: Vitamin A: 19000IU, Vitamin D3: 1000IU, Iron (3b103): 34mg, Iodine (3b201, 3b202): 3.4mg, Copper (3b405, 3b406): 10mg, Manganese (3b502, 3b504): 44mg, Zinc (3b603, 3b605, 3b606): 136mg, Selenium (3b801, 3b811, 3b812): 0.05mg - Preservatives - Antioxidants.

***** Values reflect only levels added to the formula, not those naturally occurring in components of the diet.



DIABETIC



Available in
1.5, 7 and
12kg bags

RECOMMENDED DAILY INTAKE & FEEDING DURATION

ADULT DOG	DOG'S WEIGHT (kg)	BODY CONDITION					
		THIN		NORMAL		OVERWEIGHT	
		grams	cups	grams	cups	grams	cups
2	61	5/8		54	5/8	46	4/8
4	103	1 + 1/8		91	1	78	7/8
6	139	1 + 4/8		123	1 + 3/8	106	1 + 1/8
8	173	1 + 7/8		152	1 + 5/8	131	1 + 3/8
10	205	2 + 2/8		180	2	155	1 + 5/8
15	277	3		244	2 + 5/8	211	2 + 2/8
20	344	3 + 6/8		303	3 + 2/8	261	2 + 7/8
25	407	4 + 4/8		358	3 + 7/8	309	3 + 3/8
30	466	5		410	4 + 3/8	354	3 + 7/8
35	523	5 + 5/8		461	5	398	4 + 2/8
40	578	6 + 2/8		509	5 + 4/8	440	4 + 6/8
45	632	6 + 7/8		556	6	480	5 + 2/8
50	684	7 + 3/8		602	6 + 4/8	520	5 + 5/8
55	735	8		646	7	558	6
60	784	8 + 4/8		690	7 + 4/8	596	6 + 4/8
70	880	9 + 4/8		775	8 + 3/8	669	7 + 2/8
80	973	10 + 4/8		856	9 + 2/8	739	8

DIABETIC is recommended as first line nutritional management for all newly diagnosed cases of Diabetes Mellitus until control of clinical signs and hyperglycemia have been achieved.

It is recommended to use digital food scales for measuring daily food allowance.

NOTE: The use of this food may affect the dog's sensitivity to insulin. It is highly recommended that blood glucose and insulin response are monitored when starting the diet so that insulin dosage can be adapted.

DIABETIC MELLITUS

RECOMMENDED FOR CASES OF

- Diabetes Mellitus and a Body Condition Score (BCS) $\leq 6/9$
- Diabetes Mellitus and a BCS $> 7/9$, until glycemic control has been achieved after which transition to SATIETY for weight loss

NOT RECOMMENDED IN CASE OF

- Growth, gestation/lactation



GLUCOMODULATION

Specific formula utilising cereals with a low glycaemic index and selected fibres to help in the management of post-prandial blood glucose in diabetic dogs.



HIGH PROTEIN

Helps reduce net energy supply and support maintenance of muscle mass essential in diabetic dogs.



LOW STARCH

Formula contains a reduced level of starch to help limit post-prandial blood glucose.

KEY VALUES	Per 1000 kcal	Per 100g as fed
Protein	107.65g	37.0g
Fat content	34.91g	12.0g
Digestible Carbohydrates (starch)	54.99g	18.9g
NFE	86.41g	29.7g
Crude fibre	18.91g	6.5g
Dietary fibre	49.75g	17.1g
Omega 6	6.20g	2.13g
Omega 3	1.86g	0.64g
EPA + DHA	0.87g	0.30g
Calcium	2.62g	0.90g
Phosphorus	2.04g	0.70g
Sodium	0.87g	0.30g
Crude Ash	15.42g	5.3g
Essential Fatty Acids	6.0g	2.07g
L-Carnitine	58.19mg	20mg
Total Sugars	1.6g	0.55g

Metabolisable energy* 343.7kcal/100g as fed

*Calculated according to NRC2006CF.

COMPOSITION

Dehydrated poultry protein, barley, wheat gluten**, maize gluten, vegetable fibres, hydrolysed animal proteins, animal fats, beet pulp, tapioca, fish oil, psyllium husks and seeds, fructo-oligo-saccharides, minerals, marigold extract (source of lutein). Sources of carbohydrates: barley, tapioca.

** L.I.P.: protein selected for its very high digestibility.

ADDITIVES (KG)***

Nutritional additives: Vitamin A: 15500IU, Vitamin D3: 1000IU, Iron (3b103): 33mg, Iodine (3b201, 3b202): 3.4mg, Copper (3b405, 3b406): 10mg, Manganese (3b502, 3b504): 43mg, Zinc (3b603, 3b605, 3b606): 125mg, Selenium (3b801, 3b811, 3b812): 0.05mg - Preservatives - Antioxidants.

*** Values reflect only levels added to the formula, not those naturally occurring in components of the diet.

DIABETIC SPECIAL

LOW CARBOHYDRATE



LOAF

Available in
410g can

RECOMMENDED DAILY INTAKE & FEEDING DURATION

ADULT DOG	DOG'S WEIGHT (kg)	BODY CONDITION					
		THIN		NORMAL		OVERWEIGHT	
		grams	can	grams	can	grams	can
2	257	3/4		226	2/4	195	2/4
4	432	1		380	1	328	3/4
6	585	1 + 2/4		515	1 + 1/4	445	1
8	726	1 + 3/4		639	1 + 2/4	552	1 + 1/4
10	858	2		755	1 + 3/4	652	1 + 1/4
15	1163	2 + 3/4		1024	2 + 2/4	884	2 + 1/4
20	1443	3 + 2/4		1270	3	1097	2 + 3/4
25	1706	4 + 1/4		1502	3 + 3/4	1297	3 + 1/4
30	1956	4 + 3/4		1722	4 + 1/4	1487	3 + 3/4
35	2196	5 + 1/4		1933	4 + 3/4	1669	4
40	2428	6		2136	5 + 1/4	1845	4 + 2/4
45	2652	6 + 2/4		2334	5 + 3/4	2015	5
50	2870	7		2525	6 + 1/4	2181	5 + 1/4
55	3082	7 + 2/4		2713	6 + 2/4	2343	5 + 3/4
60	3290	8		2895	7	2501	6
70	3694	9		3250	8	2807	6 + 3/4
80	4083	10		3593	8 + 3/4	3103	7 + 2/4

DIABETIC is recommended as first line nutritional management for all newly diagnosed cases of Diabetes Mellitus until control of clinical signs and hyperglycemia have been achieved.

NOTE: The use of this food may affect the dog's sensitivity to insulin. It is highly recommended that blood glucose and insulin response are monitored when starting the diet so that insulin dosage can be adapted.

DIABETIC MELLITUS

RECOMMENDED FOR CASES OF

- Diabetes Mellitus and a Body Condition Score (BCS) $\leq 6/9$
- Diabetes Mellitus and a BCS $> 7/9$, until glycemic control has been achieved, after which transition to SATIETY for weight loss

NOT RECOMMENDED IN CASE OF

- Growth, gestation/lactation



GLUCOMODULATION

Specific formula utilising cereals with a low glycaemic index and selected fibres to help in the management of post-prandial blood glucose in diabetic dogs.



HIGH PROTEIN

Helps reduce net energy supply and support maintenance of muscle mass essential in diabetic dogs.



LOW STARCH

Formula contains a reduced level of starch to help limit post-prandial blood glucose.

KEY VALUES	Per 1000 kcal	Per 100g as fed
Protein	109.89g	9.0g
Fat content	48.84g	4.0g
Digestible Carbohydrates (starch)	19.54g	1.6g
NFE	50.06g	4.1g
Crude fibre	29.30g	2.4g
Dietary fibre	47.62g	3.9g
Omega 6	12.21g	1.00g
Omega 3	0.73g	0.06g
EPA + DHA	0.09g	0.007g
Essential Fatty Acid	10.99g	0.90g
Calcium	3.42g	0.28g
Phosphorus	2.56g	0.21g
Sodium	1.22g	0.10g
Crude Ash	18.32g	1.5g
L-Carnitine	54.95mg	4.5mg
Total sugars	8g	0.7g
Moisture	964.59g	79g

Metabolisable energy* 81.9kcal/100g as fed

*Calculated according to NRC2006TDF.

[S/O®]
INDEX

This product creates a urinary environment unfavourable to the formation of struvite and calcium oxalate stones.

COMPOSITION

Pork by-products, poultry by-products, chicken meat, powdered cellulose, maize grits, pork blood products, sunflower oil, beet pulp, minerals, marigold extract (source of lutein).

ADDITIVES (KG)**

Nutritional additives: Vitamin D3: 180IU, Iron (3b103): 3mg, Iodine (3b201, 3b202): 0.3mg, Copper (3b405, 3b406): 2mg, Manganese (3b502, 3b504): 1mg, Zinc (3b603, 3b605, 3b606): 10mg.

** Values reflect only levels added to the formula, not those naturally occurring in components of the diet.



URINARY + SATIETY



Available in
3.5 and 9kg bags

RECOMMENDED DAILY INTAKE & FEEDING DURATION

	TARGET BODY WEIGHT OF DOG		START		AFTER 4 WEEKS WITH NO WEIGHT LOSS	
	grams	cups	grams	cups	grams	cups
2	44	4/8	37	4/8		
4	73	7/8	63	6/8		
6	99	1 1/8	85	1		
8	123	1 4/8	106	1 2/8		
10	146	1 6/8	125	1 4/8		
12	167	2	143	1 6/8		
14	188	2 2/8	161	1 7/8		
16	207	2 4/8	178	2 1/8		
18	227	2 6/8	194	2 2/8		
20	245	2 7/8	210	2 4/8		
25	290	3 4/8	249	3		
30	332	4	285	3 3/8		
35	373	4 4/8	320	3 6/8		
40	413	4 7/8	354	4 2/8		
45	451	5 3/8	386	4 5/8		
50	488	5 6/8	418	5		
60	559	6 5/8	479	5 6/8		
70	628	7 4/8	538	6 3/8		
80	694	8 2/8	595	7 1/8		
90	758	9	650	7 6/8		

For nutritional management of dogs at risk of struvite stone recurrence and reduction of excess bodyweight: feed the diet up to 6 months and re-evaluate based on clinical assessment of the response. If a urinary tract infection is present S/O-Kcal Control Canine, combined with an antibacterial agent, should be fed for at least one month after a negative urine culture result has been obtained. For detailed guidance on weight reduction please see product information for Satiety Canine.

RECOMMENDATIONS: Target Weight should be determined according to Body Condition Score of the individual. The optimal weight loss rate is 1-3% bodyweight weekly. It is recommended to continue feeding the weight-loss diet once target weight is achieved. Energy intake should be gradually increased until weight has stabilised. Should the dog regain more than 5% of body weight, the daily ration should be decreased to weight loss levels. It is recommended to use digital food scales for measuring daily food allowance and divide the daily food intake into a minimum of 2 meals.

[S/O® INDEX] This product creates a urinary environment unfavourable to the formation of struvite and calcium oxalate stones.

RECOMMENDED FOR CASES OF

Urinary disorders: • Recurrent struvite and calcium oxalate urolithiasis • Bacterial cystitis • Dissolution of struvite uroliths. In older dogs, renal function should be checked before S/O-Kcal Control Canine is recommended.

+ Weight Management: Obesity • Diabetes mellitus associated with obesity • Hyperlipidaemia associated with obesity

NOT RECOMMENDED IN CASE OF

Pregnancy, lactation, growth • Chronic Kidney Disease • Heart disease (where sodium restriction is required) • Concurrent use of urine-acidifying drugs • Conditions where high fibre content is not recommended



SATIETOGENIC EFFECT

Contains a special blend of fibres which have a satiating effect on dogs.



HIGH PROTEIN

A high protein content (111 g/1000 kcal ME) helps maintain muscle mass throughout the weight loss period.



URINE DILUTION

Urine dilution makes the urine less liable to form struvite and calcium oxalate stones.



LOW RSS

Helps lower the concentration of ions contributing to struvite and calcium oxalate crystal formation.

KEY VALUES	Per 100g as fed
Protein	30g
Fat content	9.5g
Carbohydrate	27.5g
NFE	27.5g
Dietary fibre	27.5g
Crude fibre	16.4g
Omega 6	1.98mg
Omega 3	0.6mg
EPA+DHA	0.28g
Calcium	0.86g
Phosphorus	0.69g
Sodium	0.95g
L-Carnitine	32.5mg
Chondroitin sulphate + Glucosamine	100mg

Metabolisable energy* 266kcal

* Calculated according to NRC2006.

COMPOSITION

Dehydrated poultry protein, cellulose powder, wheat gluten**, tapioca, vegetable fibres, hydrolysed animal proteins, wheat, chicory pulp, maize, animal fats, maize gluten, minerals, fish oil, psyllium husks and seeds, fatty acid salt, fructo-oligo-saccharides, soya oil, hydrolysed crustaceans (source of glucosamine), marigold extract (source of lutein), hydrolysed cartilage (source of chondroitin). Protein sources: dehydrated poultry protein, wheat gluten**, hydrolysed animal proteins, maize gluten.

** L.I.P.: protein selected for its very high digestibility.

ADDITIVES (KG)***

Nutritional additives: Vitamin A: 19500 IU, Vitamin D3: 1000 IU, E1 (Iron): 41 mg, E2 (Iodine): 4.1 mg, E4 (Copper): 13 mg, E5 (Manganese): 53 mg, E6 (Zinc): 137 mg, E8 (Selenium): 0.07 mg, Urine acidifying substances: calcium sulphate (0.5%). Preservatives - Antioxidants.

*** Values reflect only levels added to the formula, not those naturally occurring in components of the diet.



MULTIFUNCTION

MOBILITY C2P+

SATIETY



Available in
3.5 and 9kg bag

RECOMMENDED DAILY INTAKE & FEEDING DURATION

ADULT DOG	DOG'S WEIGHT (kg)	BODY CONDITION					
		THIN		NORMAL		OVERWEIGHT	
		grams	cups	grams	cups	grams	cups
2	42	4/8		36	3/8	40	4/8
4	71	7/8		61	6/8	67	6/8
6	97	1 + 1/8		83	1	91	1 + 1/8
8	120	1 + 3/8		103	1 + 2/8	113	1 + 3/8
10	142	1 + 6/8		122	1 + 4/8	134	1 + 5/8
15	192	2 + 2/8		165	2	181	2 + 1/8
20	239	2 + 7/8		204	2 + 3/8	225	2 + 5/8
25	282	3 + 3/8		242	2 + 7/8	266	3 + 1/8
30	323	3 + 7/8		277	3 + 2/8	305	3 + 5/8
35	363	4 + 3/8		311	3 + 6/8	342	4 + 1/8
40	401	4 + 6/8		344	4 + 1/8	378	4 + 4/8
45	438	5 + 2/8		376	4 + 4/8	413	4 + 7/8
50	474	5 + 5/8		407	4 + 7/8	447	5 + 3/8
55	509	6		437	5 + 2/8	480	5 + 6/8
60	544	6 + 4/8		466	5 + 4/8	513	6 + 1/8
70	610	7 + 2/8		523	6 + 2/8	576	6 + 7/8
80	675	8		578	6 + 7/8	636	7 + 5/8

Individual target weight is determined and then feeding amount established. The recommended daily intake is based on the dog's ideal weight. The starting ration may need to be adjusted during follow-up visits, based on each individual's response and the rate of weight loss. An objective of losing 1-3% bodyweight per week is generally achievable over the first 3 months, and of 0.5-2% afterwards. Maximum benefits on mobility are expected after 6 to 8 weeks feeding.

Calculation of energy allocation for maintenance after weight: Energy requirements to maintain stable bodyweight after weight loss are lower than those of dogs that have never been obese. Based on current scientific insights (German and al. 2011), our maintenance after weight loss rations are calculated by increasing the weight loss ration by +10%. Mobility C2P+ + Satiety diet may be continued for the dog's lifetime.

RECOMMENDED FOR CASES OF

Mobility management:

- Help support healthy joint function
- Help support joints after orthopaedic surgery or trauma

Weight management:

- Overweight/obesity
- Diabetes mellitus or hyperlipidemia associated with overweight/obesity

NOT RECOMMENDED IN CASE OF

- Dogs with a history of constipation in response to a high fibre diet
- Growth, gestation/lactation
- Chronic diseases requiring an increased energy intake



MOBILITY SUPPORT

Scientifically proven to support mobility in dogs.



INNOVATIVE C2P+ JOINT COMPLEX

Formulated with a synergistic combination of turmeric extract, hydrolysed collagen and green tea polyphenols, to help support healthy joint cartilage.



EFFECTIVE WEIGHT MANAGEMENT

Adapted macronutrient profile helps provide safe weight loss and helps avoid weight regain. 97% of dogs lost weight in 3 months².



BEGGING CONTROL

High natural fibre level helps keep dogs satisfied between meals. Helped control begging in 83% of dogs during weight loss².

² Flanagan J et al. Success of a weight loss plan for overweight dogs: the results of an international weight loss study. PLoS One 2017;12(9):e0184199.

KEY VALUES	Per 1000 kcal	Per 100g as fed
Moisture	34.23g	9.50g
Protein	100.90g	28.00g
Fat content	43.24g	12.00g
Crude fibre	58.38g	16.20g
Crude ash	19.10g	5.30g
Carbohydrate (NFE)	104.50g	29.00g
Dietary fibre	101.62g	28.20g
Omega 6	7.28g	2.02g
Omega 3	2.88g	0.80g
EPA + DHA	1.80g	0.50g
Calcium	2.88g	0.80g
Phosphorus	1.44g	0.40g
Sodium	1.44g	0.40g
Potassium	2.88g	0.80g
Magnesium	0.22g	0.06g
Vitamin E	136.94 IU	38.00 IU

Metabolisable energy* 277.50kcal

* Calculated according to NRC2006 TDF.

COMPOSITION

Vegetable fibres, dehydrated poultry protein, wheat gluten**, maize gluten, maize, manioc (tapioca), animal fats, wheat, hydrolysed animal proteins, beet pulp, minerals, fish oil, hydrolysed collagen (1.2%), psyllium husks and seeds, soya oil, fructo-oligo-saccharides, marigold extract (source of lutein).

** L.I.P.: protein selected for its very high digestibility.


ADDITIVES (KG)***

Nutritional additives: Vitamin A: 15 500 IU, Vitamin D3: 1 000 IU, Iron [3b103]: 38mg, Iodine [3b201, 3b202]: 3.8mg, Copper [3b405, 3b406]: 12mg, Manganese [3b502, 3b504]: 49mg, Zinc [3b603, 3b605, 3b606]: 141mg, Selenium [3b801, 3b811, 3b812]: 0.09mg - Sensory additives: turmeric extract (Curcuma Longa L.): 1.254g, Tea extract (source of polyphenols): 600mg - Preservatives - Antioxidants.


*** Values reflect only levels added to the formula, not those naturally occurring in components of the diet.



DOGS MIX FEEDING GUIDELINES




MIX: SATIETY DOG DRY + SATIETY DOG WET CAN 410g


IDEAL WEIGHT (kg)	CAN 	STAGE		
		START	IF NO LOSS AFTER 4 WEEKS*	SUGGESTED DAILY FOOD INTAKE AFTER WEIGHT LOSS
		DRY (g)	DRY (g)	DRY (g)
2	1/4	20	14	18
4	1/2	27	16	23
6	1/2	53	39	47
8	1/2	77	60	70
10	1+	53	32	44
15	1+	105	77	94
20	1+	153	118	139
25	1+	199	157	182
30	1+	242	193	222
40	1+	322	263	299
50	1+	399	328	370
60	1+	471	390	438

*Review the weight loss plan including: BCS, ideal weight, feeding volume and measuring before making any adjustments.





MIX: SATIETY SMALL DOG DRY + SATIETY DOG WET CAN 410g

IDEAL WEIGHT (kg)	CAN 	STAGE		
		START	IF NO LOSS AFTER 4 WEEKS*	SUGGESTED DAILY FOOD INTAKE AFTER WEIGHT LOSS
		DRY (g)	DRY (g)	DRY (g)
2	1/4	20	14	18
4	1/2	27	16	22
6	1/2	53	38	47
8	1/2	77	59	70
10	1+	52	31	44

*Review the weight loss plan including: BCS, ideal weight, feeding volume and measuring before making any adjustments.



SMALL DOGS FEEDING GUIDELINES

ADULT DOG	DOGS WEIGHT (kg)*	STAGE		
		START	4 WEEKS AFTER*	MAINTENANCE AFTER WEIGHT LOSS
		grams	grams	grams
	1	26	22	25
	1.5	36	30	34
	2	44	38	42
	2.5	52	45	49
	3	60	51	56
	3.5	67	58	63
	4	74	64	70
	5	88	75	83
	6	101	86	95
	7	113	97	106
	8	125	107	118
	9	136	117	129
	10	148	126	139

*Review the weight loss plan including: BCS, ideal weight, feeding volume and measuring before making any adjustments.



DOGS MIX FEEDING GUIDELINES

24H	DOGS WEIGHT (kg)	CAN	MIX: DIABETIC DOG DRY + DIABETIC LOW CARBOHYDRATE DOG WET CAN 410g					
			BODY CONDITION					
			THIN		NORMAL		OVERWEIGHT	
			DRY (g)	CUP (240cm³)	DRY (g)	CUP (240cm³)	DRY (g)	CUP (240cm³)
	2	1/4	37	3/8	29	3/8	22	2/8
	4	1/2	54	5/8	42	4/8	29	3/8
	6	1/2	91	1	74	6/8	57	5/8
	8	1/2	124	1 + 3/8	103	1 + 1/8	83	7/8
	10	1+	107	1 + 1/8	82	7/8	58	5/8
	15	1+	180	2	146	1 + 5/8	113	1 + 2/8
	20	1+	246	2 + 5/8	205	2 + 2/8	164	2 + 6/8
	25	1+	309	3 + 3/8	260	2 + 7/8	211	2 + 2/8
	30	1+	369	4	313	3 + 3/8	257	2 + 6/8
	40	1+	481	5 + 2/8	411	4 + 4/8	342	3 + 6/8
	50	1+	586	6 + 3/8	504	5 + 4/8	422	4 + 5/8
	60	1+	686	7 + 3/8	592	6 + 3/8	498	5 + 3/8
	70	1+	782	8 + 4/8	677	7 + 3/8	571	6 + 1/8
	80	1+	875	9 + 4/8	758	8 + 2/8	642	7





WWW.ROYALCANIN.COM/UK

NUTRITIONAL HELPLINE

+44(0)800 717800