





**SATIETY**  
WEIGHT MANAGEMENT

**DIABETIC**

URINARY + SATIETY



**SATIETY**  
WEIGHT MANAGEMENT

**SATIETY**  
WEIGHT MANAGEMENT

SMALL DOGS **S**

**DIABETIC**

**DIABETIC SPECIAL**  
LOW CARBOHYDRATE

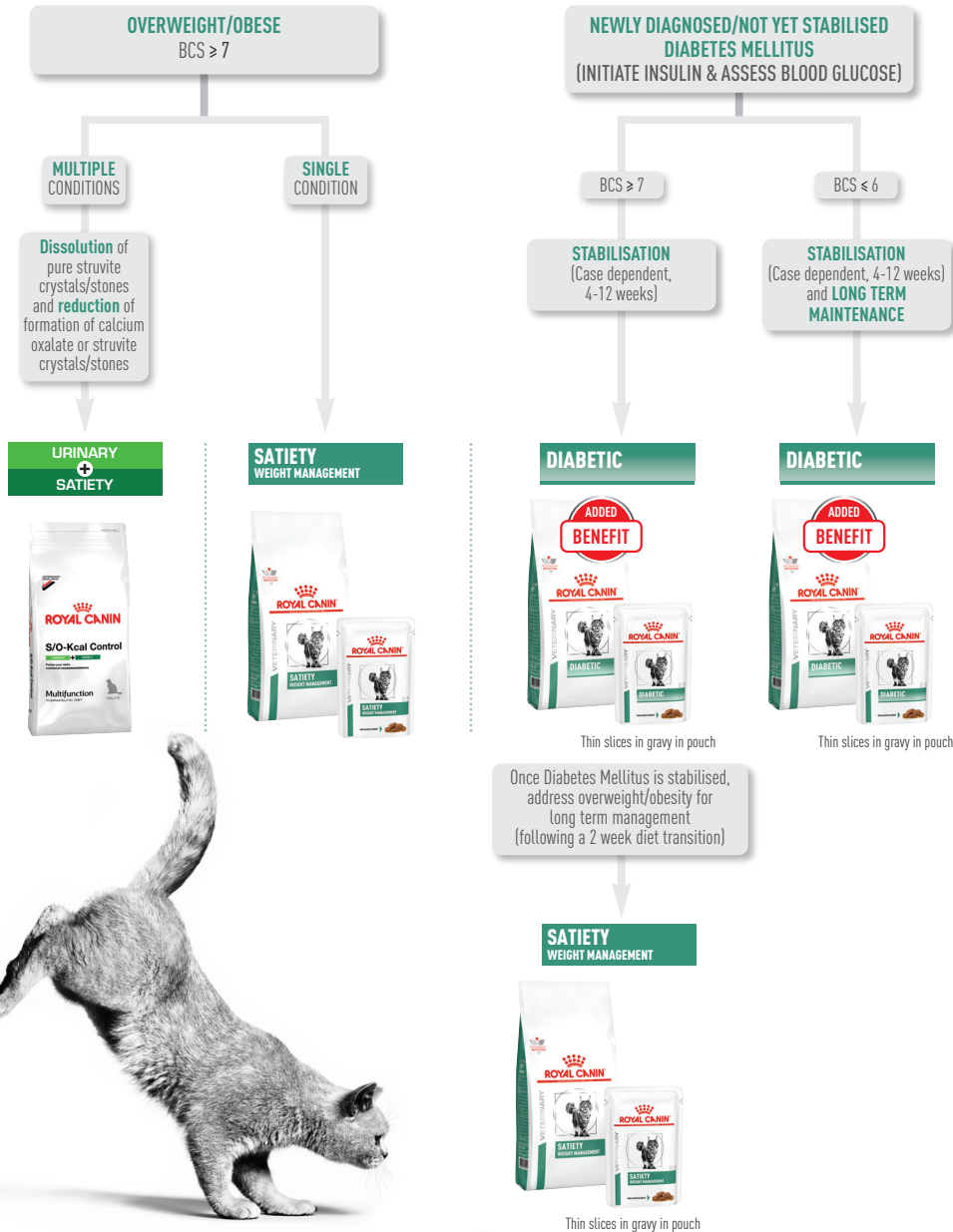
URINARY + SATIETY

MOBILITY C2P + SATIETY

This resource has been produced with the greatest care and incorporates the most up-to-date scientific information and research findings. We recommend that you refer to our packaging as the primary reference for product information as this can change with time. Bearing in mind the diversity and complexity of clinical cases in dogs and cats, it is important to note that the suggestions in this resource for further tests and therapeutic options cannot be exhaustive. Under no circumstances should the treatments and dietary solutions suggested here replace examination by a veterinary surgeon.

The publishers and the authors will accept no responsibility for the failure of any of the treatments or nutritional solutions put forward in this resource. Not for use in Canada and in USA.

# FELINE NUTRITIONAL MANAGEMENT DECISION TREE



## SATIETY WEIGHT MANAGEMENT



Available in  
1.5, 3.5 and  
6kg bags

### RECOMMENDED DAILY INTAKE & FEEDING DURATION

ADULT CAT	IDEAL WEIGHT (kg)	STAGE		
		START	IF NO LOSS AFTER 4 WEEKS*	SUGGESTED DAILY INTAKE AFTER WEIGHT LOSS
		grams	grams	grams
2	29	23	30	
2.5	33	27	35	
3	38	30	40	
3.5	42	34	45	
4	47	37	49	
4.5	51	40	54	
5	55	43	58	
5.5	59	46	62	
6	62	49	66	
6.5	66	52	70	
7	70	55	73	
7.5	73	58	77	
8	76	61	81	

\*Review the weight loss plan including: BCS, ideal weight, feeding volume and measuring before making any adjustments.

**IDEAL WEIGHT** should be determined according to weight and BCS of the individual. The recommended daily intake is based on the pet's ideal weight. The starting ration may need to be adjusted during follow up visits. The optimal weight loss rate is 0.5-2% bodyweight per week.

**Maintenance Ration:** Energy requirements to maintain stable body weight after weight loss are lower than those of cats that have never been obese. It is recommended to continue feeding the weight loss diet once ideal or target weight has been achieved.

To maintain ideal weight, gradually increase the daily food intake until weight has stabilised.

Maintenance rations may need to be adjusted based on the individual. If the cat regains more than 5% of body weight, the ration should be decreased to weight loss rations.

It is recommended to use a digital food scales for measuring daily food allowance and divide the daily food intake into a minimum of 3 meals.

\*\*Flanagan J et al. An international multi-centre cohort study of weight loss in overweight cats: Differences in outcome in different geographical locations. *PLoS One*. 2018 Jul 25;13(7):e0200414.

## WEIGHT MANAGEMENT

### RECOMMENDED FOR WEIGHT LOSS AND MAINTENANCE AFTER WEIGHT LOSS IN CASE OF

- Overweight/Obesity
- Stabilised Diabetes Mellitus with overweight/obesity
- Hyperlipidemia with overweight/obesity

### NOT RECOMMENDED IN CASE OF

- Cats with a history of constipation in response to a high fibre diet
- Growth, gestation/lactation



### EFFECTIVE WEIGHT MANAGEMENT

An adapted macronutrient profile helps provide safe weight loss and helps avoid weight regain. 97% of cats lost weight in 3 months\*\*.



### BEGGING CONTROL

High natural fibre level helps keep cats satisfied between meals. Helped control begging in 82% of cats during weight loss\*\*.



### MUSCLE MASS MAINTENANCE

High protein content helps support healthy weight loss while maintaining muscle mass.

KEY VALUES	Per 1000 kcal	Per 100g as fed
Protein	111.84g	34.0g
Fat content	29.61g	9.0g
Digestible Carbohydrates (starch)	61.18g	18.6g
NFE	92.43g	28.1g
Crude fibre	48.03g	14.6g
Dietary fibre	79.93g	24.3g
Omega 6	6.09g	1.85g
Omega 3	1.55g	0.47g
EPA + DHA	0.66g	0.20g
Calcium	4.44g	1.35g
Phosphorus	3.72g	1.13g
Sodium	1.81g	0.55g
Crude Ash	28.2g	8.6g
L-Carnitine	65.8mg	20mg
Glucosamine/Chondroitin	164.47mg	50mg

Metabolisable energy\*\*\* 304kcal/100g as fed

\*\*\*Calculated according to NRC2006TDF.

**[S/O]<sup>®</sup> INDEX** This product creates a urinary environment unfavourable to the formation of struvite and calcium oxalate stones.

### COMPOSITION

Dehydrated poultry protein, vegetable fibres, tapioca, wheat flour, hydrolysed animal proteins, wheat gluten\*, maize gluten, animal fats, chicory pulp, minerals, psyllium husks and seeds, fish oil, marigold extract (source of lutein), glucosamine, hydrolysed cartilage (source of chondroitin).

### ADDITIVES (KG)<sup>†</sup>

Nutritional additives: Vitamin A: 25000IU, Vitamin D3: 1000IU, Iron [3b103]: 33mg, Iodine [3b201, 3b202]: 3.3mg, Copper [3b405, 3b406]: 10mg, Manganese [3b502, 3b504]: 43mg, Zinc [3b603, 3b605, 3b606]: 133mg, Selenium [3b801, 3b811, 3b812]: 0.05mg - Preservatives - Antioxidants.

<sup>†</sup> Values reflect only levels added to the formula, not those naturally occurring in components of the diet.



# SATIETY WEIGHT MANAGEMENT



THIN SLICES IN GRAVY

Available in box of 12 pouches of 85g

## RECOMMENDED DAILY INTAKE & FEEDING DURATION

ADULT CAT	IDEAL WEIGHT (kg)	STAGE					
		START		IF NO LOSS AFTER 4 WEEKS*		SUGGESTED DAILY INTAKE AFTER WEIGHT LOSS	
		grams	pouch	grams	pouch	grams	pouch
2	130	1 ½	105	1	140	1 ½	
2.5	155	2	120	1 ½	165	2	
3	175	2	140	1 ½	185	2	
3.5	195	2 ½	155	2	205	2 ½	
4	215	2 ½	170	2	225	2 ½	
4.5	235	3	185	2	245	3	
5	250	3	200	2 ½	265	3	
5.5	270	3	215	2 ½	285	3 ½	
6	285	3 ½	225	2 ½	305	3 ½	
6.5	305	3 ½	240	3	320	4	
7	320	4	255	3	340	4	
7.5	335	4	265	3	355	4	
8	350	4	280	3 ½	370	4 ½	

\*Review the weight loss plan including: BCS, ideal weight, feeding volume and measuring before making any adjustments.

**IDEAL WEIGHT** should be determined according to weight and BCS of the individual. The recommended daily intake is based on the pet's ideal weight. The starting ration may need to be adjusted during follow up visits. The optimal weight loss rate is 0.5-2% bodyweight per week.

**Maintenance Ration:** Energy requirements to maintain stable body weight after weight loss are lower than those of cats that have never been obese. It is recommended to continue feeding the weight loss diet once ideal or target weight has been achieved.

To maintain ideal weight, gradually increase the daily food intake until weight has stabilised.

Maintenance rations may need to be adjusted based on the individual. If the cat regains more than 5% of body weight, the ration should be decreased to weight loss rations.

It is recommended to divide the daily food intake into a minimum of 3 meals.

## WEIGHT MANAGEMENT

### RECOMMENDED FOR WEIGHT LOSS AND MAINTENANCE AFTER WEIGHT LOSS IN CASE OF

- Overweight/Obesity
- Stabilised Diabetes Mellitus with overweight/obesity
- Hyperlipidemia with overweight/obesity

### NOT RECOMMENDED IN CASE OF

- Growth, gestation/lactation



### EFFECTIVE WEIGHT MANAGEMENT

An adapted macronutrient profile helps provide safe weight loss and avoid weight regain.



### BEGGING CONTROL

Nutritional profile that helps keep cats satisfied between meals



### MUSCLE MASS MAINTENANCE

High protein content helps support healthy weight loss while maintaining muscle mass.

KEY VALUES	Per 1000 kcal	Per 100g as fed
Protein	113.64g	7.5g
Fat content	33.33g	2.2g
Digestible Carbohydrates (starch)	33.33g	2.2g
NFE	50.00g	3.3g
Crude fibre	19.70g	1.3g
Dietary fibre	22.73g	1.5g
Omega 6	7.58g	0.50g
Omega 3	0.76g	0.05g
EPA + DHA	0.6g	0.004g
Calcium	4.09g	0.27g
Phosphorus	3.33g	0.22g
Sodium	1.81g	0.16g
Crude Ash	28g	1.7g
L-Carnitine	48.48mg	3.2mg
Glucosamine/Chondroitin	113.64mg	7.5mg
Moisture	1272.7g	84g

Metabolisable energy\*\* 66kcal/100g as fed

\*\*Calculated according to NRC2006TDF.



This product creates a urinary environment unfavourable to the formation of struvite and calcium oxalate stones.

## COMPOSITION

Poultry by-products, pork by-products, rice flour, pork blood products, powdered cellulose, dried albumen, minerals, caramelised sugars, marigold extract (source of lutein), hydrolysed crustaceans (source of glucosamine), hydrolysed cartilage (source of chondroitin).

### ADDITIVES (KG)\*\*\*

Nutritional additives: Vitamin D3: 235IU, Iron [3b103]: 7mg, Iodine [3b202]: 0.23mg, Copper [3b405, 3b406]: 1.9mg, Manganese [3b502, 3b503, 3b504]: 2mg, Zinc [3b603, 3b605, 3b606]: 20mg.

\*\*\* Values reflect only levels added to the formula, not those naturally occurring in components of the diet.

## DIABETIC



Available in 1.5 and 3.5kg bags

## RECOMMENDED DAILY INTAKE & FEEDING DURATION

ADULT CAT	CAT'S WEIGHT (kg)	BODY CONDITION					
		THIN		NORMAL		OVERWEIGHT	
		grams	cups	grams	cups	grams	cups
2	40	4/8	33	3/8	26	2/8	
2.5	46	4/8	39	3/8	31	3/8	
3	53	5/8	44	4/8	35	3/8	
3.5	59	5/8	49	4/8	39	3/8	
4	65	6/8	54	5/8	43	4/8	
4.5	70	6/8	59	5/8	47	4/8	
5	76	7/8	63	6/8	51	4/8	
5.5	81	7/8	68	6/8	54	5/8	
6	86	1	72	6/8	58	5/8	
6.5	91	1	76	7/8	61	5/8	
7	96	1	80	7/8	64	6/8	
7.5	101	1 + 1/8	84	7/8	67	6/8	
8	106	1 + 1/8	88	1	71	6/8	
8.5	111	1 + 2/8	92	1	74	6/8	
9	115	1 + 2/8	96	1	77	7/8	
9.5	120	1 + 3/8	100	1 + 1/8	80	7/8	
10	124	1 + 3/8	104	1 + 1/8	83	7/8	

\*DIABETIC is recommended as first line nutritional management for all newly diagnosed cases of Diabetes Mellitus until control of clinical signs and hyperglycemia have been achieved.

NOTE: the use of this food may affect the cat's sensitivity to insulin. It is highly recommended that blood glucose and insulin response are monitored when starting the diet so that insulin dosage can be adapted. Once glycemic control is reached, nutritional management should be guided by assessment of the Body Condition Score.

BCS 6 or less: continue DIABETIC

BCS 7-8-9: transition to SATIETY WEIGHT MANAGEMENT

It is highly recommended that blood glucose and insulin response are monitored when starting or changing the diet so that insulin dosage can be adapted.

It is recommended to use a digital food scales for measuring daily food allowance.

## DIABETIC MELLITUS

### RECOMMENDED FOR CASES OF

- Diabetes Mellitus and a Body Condition Score (BCS) < 6/9
- Diabetes Mellitus and a BCS > 7/9, until glycemic control has been achieved\*

### NOT RECOMMENDED IN CASE OF

- Growth, gestation/lactation



### GLUCOMODULATION

Specific formula utilising cereals with a low glycaemic index and selected fibres to help in the management of post-prandial blood glucose in diabetic cats.



### HIGH PROTEIN

Helps reduce net energy supply and support the maintenance of muscle mass essential in diabetic cats.



### LOW STARCH

Formula contains a reduced level of starch to help limit post prandial blood glucose.

KEY VALUES	Per 1000 kcal	Per 100g as fed
Protein	119.42g	46g
Fat content	31.15g	12.0g
Digestible Carbohydrates (starch)	48.81g	18.8g
NFE	66.72g	25.7g
Crude fibre	9.87g	3.8g
Dietary fibre	29.34g	11.3g
Omega 6	7.14g	2.75g
Omega 3	1.87g	0.72g
EPA + DHA	0.78g	0.30g
Calcium	2.39g	0.92g
Phosphorus	2.36g	0.91g
Sodium	1.04g	0.40g
Arginine	7.09mg	2.73g
Crude Ash	16.61g	6.4g
Essential Fatty Acids	7.47g	2.88g
L-Carnitine	51.92mg	20mg
Total Sugars	3.89g	1.5g

Metabolisable energy\*\* 385kcal/100g as fed

\*\*Calculated according to NRC2006CF.



This product creates a urinary environment unfavourable to the formation of struvite and calcium oxalate stones.

## COMPOSITION\*\*\*

Dehydrated poultry protein, barley, wheat gluten\*, maize gluten, soya protein isolate\*, tapioca, animal fats, hydrolysed animal proteins, vegetable fibres, chicory pulp, minerals, fish oil, psyllium husks and seeds, fructo-oligosaccharides, soya oil, marigold extract (source of lutein). Sources of carbohydrates: barley, tapioca.

\*\*\* L.I.P. (Low Indigestible Protein): protein selected because of its very high assimilation.

### ADDITIVES (KG)†

Nutritional additives: Vitamin A: 25000IU, Vitamin D3: 1000IU, Iron [3b103]: 33mg, Iodine [3b201, 3b202]: 3.3mg, Copper [3b405, 3b406]: 10mg, Manganese [3b502, 3b504]: 43mg, Zinc [3b603, 3b605, 3b606]: 130mg, Selenium [3b801, 3b811, 3b812]: 0.05mg - Preservatives - Antioxidants.

† Values reflect only levels added to the formula, not those naturally occurring in components of the diet.



## DIABETIC



THIN SLICES IN GRAVY

Available in box  
of 12 pouches  
of 85g

## RECOMMENDED DAILY INTAKE &amp; FEEDING DURATION

ADULT CAT	CAT'S WEIGHT (kg)	BODY CONDITION					
		THIN		NORMAL		OVERWEIGHT	
		grams	pouch	grams	pouch	grams	pouch
2	195	2 +1/2	165	2	130	1 + 1/2	
2.5	230	2 +1/2	190	2	155	2	
3	260	3	220	2 +1/2	175	2	
3.5	290	3 +1/2	245	3	195	2 +1/2	
4	320	4	270	3	215	2 +1/2	
4.5	350	4	290	3 +1/2	235	3	
5	375	4 +1/2	315	3 +1/2	250	3	
5.5	405	5	335	4	270	3	
6	430	5	355	4	285	3 +1/2	
6.5	455	5 +1/2	380	4 +1/2	300	3 +1/2	
7	480	5 +1/2	400	4 +1/2	320	4	
7.5	500	6	420	5	335	4	
8	525	6	440	5	350	4	
8.5	550	6 +1/2	460	5 +1/2	365	4 +1/2	
9	570	6 +1/2	475	5 +1/2	380	4 +1/2	
9.5	595	7	495	6	395	4 +1/2	
10	615	7	515	6	410	5	

\*DIABETIC is recommended as first line nutritional management for all newly diagnosed cases of Diabetes Mellitus until control of clinical signs and hyperglycemia have been achieved.

NOTE: the use of this food may affect the cat's sensitivity to insulin. It is highly recommended that blood glucose and insulin response are monitored when starting the diet so that insulin dosage can be adapted. Once glycemic control is reached, nutritional management should be guided by assessment of the Body Condition Score.

BCS 6 or less: continue DIABETIC

BCS 7-8-9: transition to SATIETY WEIGHT MANAGEMENT

It is highly recommended that blood glucose and insulin response are monitored when starting or changing the diet so that insulin dosage can be adapted.

It is recommended to divide the daily food intake into a minimum of 3 meals.

## DIABETIC MELLITUS

## RECOMMENDED FOR CASES OF

- Diabetes Mellitus and a Body Condition Score (BCS) < 6/9
- Diabetes Mellitus and a BCS > 7/9, until glycemic control has been achieved\*

## NOT RECOMMENDED IN CASE OF

- Growth, gestation/lactation



## GLUCOMODULATION

Specific formula utilising cereals with a low glycaemic index and selected fibres to help in the management of post-prandial blood glucose in diabetic cats.



## HIGH PROTEIN

Helps reduce net energy supply and maintenance of muscle mass essential in diabetic cats.



## LOW STARCH

Formula that contains a reduced level of starch to help limit postprandial blood glucose.

KEY VALUES	Per 1000 kcal	Per 100g as fed
Protein	114.69g	8.9g
Fat content	41.24g	3.2g
Digestible Carbohydrates (starch)	15.46g	1.2g
NFE	36.08	2.8g
Crude fibre	14.18g	1.1g
Dietary fibre	19.33g	1.5g
Omega 6	7.73g	0.60g
Omega 3	2.19g	0.17g
EPA + DHA	1.38g	0.11g
Calcium	3.74g	0.29g
Phosphorus	2.71g	0.21g
Sodium	2.06g	0.16g
Arginine	7.09mg	0.55g
Crude Ash	21.91g	1.7g
Essential Fatty Acids	7.5g	0.54g
L-Carnitine	15.46mg	1.2mg
Total Sugars	18g	1.3g
Moisture	1142.7g	82.5g

Metabolisable energy\*\* 78kcal/100g as fed

\*\*Calculated according to NRC2006TDF.



This product creates a urinary environment unfavourable to the formation of struvite and calcium oxalate stones.

## COMPOSITION

Poultry by-products, pork by-products, pork blood products, modified maize starch, hydrolysed pork gelatin, powdered cellulose, minerals, fish oil, marigold extract (source of lutein).

## ADDITIVES (KG)\*\*\*

Nutritional additives: Vitamin D3: 270IU, Iron (3b103): 3mg, Iodine (3b201, 3b202): 0.4mg, Copper (3b405, 3b406): 3mg, Manganese (3b502, 3b504): 0.8mg, Zinc (3b603, 3b605, 3b606): 8mg - Technological additives: Cloptonilolite of sedimentary origin: 1g.

\*\*\* Values reflect only levels added to the formula, not those naturally occurring in components of the diet.

## URINARY



## SATIETY



Available in  
1.5 and 3.5kg bags

## RECOMMENDED DAILY INTAKE &amp; FEEDING DURATION

ADULT CAT	TARGET BODY WEIGHT OF CAT	START			
		grams		AFTER 4 WEEKS WITH NO WEIGHT LOSS	
		grams	cups	grams	cups
2	28	3/8	23	2/8	
2.5	33	3/8	26	3/8	
3	38	4/8	30	3/8	
3.5	42	4/8	34	3/8	
4	47	5/8	37	4/8	
4.5	51	5/8	40	4/8	
5	55	5/8	43	4/8	
5.5	58	6/8	46	5/8	
6	62	6/8	49	5/8	
6.5	66	6/8	52	5/8	
7	69	7/8	55	5/8	
7.5	73	7/8	58	6/8	
8	76	7/8	60	6/8	
8.5	80	1	63	6/8	
9	83	1	66	6/8	
9.5	86	1	68	7/8	
10	89	1 1/8	71	7/8	

For nutritional management of cats with struvite urolithiasis and excessive bodyweight: feed the diet for 5-12 weeks and re-evaluate based on clinical assessment of the response. To avoid recurrence of struvite uroliths, the diet should be fed for a further 6 months minimum followed by urinalysis. For detailed guidance on weight reduction please see product information for Satiety Feline. S/O-Kcal Control Feline can be maintained for the cat's lifetime. It is recommended to divide the daily intake into 2 meals.

RECOMMENDATIONS: Target Weight should be determined according to Body Condition Score of the individual. The optimal weight loss rate is 0.5-2% bodyweight weekly. Maintenance Ration: It is recommended to continue feeding the weight-loss diet once target weight is achieved. Energy intakes should be gradually increased until weight has stabilised. Should the cat regain more than 5% of bodyweight, the daily ration should be decreased to weight loss levels. It is recommended to use a digital food scales for measuring daily food allowance.



This product creates a urinary environment unfavourable to the formation of struvite and calcium oxalate stones.

## LOWER URINARY TRACT DISEASE AND WEIGHT MANAGEMENT

## RECOMMENDED FOR CASES OF

Feline lower urinary tract disease: • Dissolution of struvite uroliths • Management of recurrent struvite and calcium oxalate urolithiasis. In older cats, renal function should be checked before S/O-Kcal Control Feline is recommended.

+ Weight Management: Obesity • Diabetes mellitus associated with obesity

## NOT RECOMMENDED IN CASE OF

Pregnancy, lactation, growth • Chronic diseases requiring an increased energy intake • Chronic Kidney Disease • Heart disease (where sodium restriction is required) • Concurrent use of urine-acidifying drugs • Conditions where high fibre content is not recommended



## SATIETOGENIC EFFECT

Contains a special blend of fibres which have a satiating effect on cats.



## HIGH PROTEIN

A high protein content (111 g/1000 kcal ME) helps maintain muscle mass throughout the weight loss period.



## URINE DILUTION

Urine dilution makes the urine less liable to form struvite and calcium oxalate stones.



## LOW RSS

Helps lower the concentration of ions contributing to struvite and calcium oxalate crystal formation.

KEY VALUES	Per 100g as fed
Protein	34g
Fat content	9g
Carbohydrate	18.4g
NFE	27.9g
Dietary fibre	23.5g
Crude fibre	14g
Omega 6	1.89mg
Omega 3	0.37mg
Epa+DHA+DHA	0.14g
Calcium	1.26g
Phosphorus	1.15g
Sodium	1.1g
L-Carnitine	20mg
Chondroitin sulphate + Glucosamine	50mg

Metabolisable energy\* 304.6 Kcal

\*Calculated according to NRC2006.

\*\*NOTE: Values reflect only levels added to the formula, not those naturally occurring in components of the diet. For total levels in the diet, refer to the Average Analyses pages.

## COMPOSITION

Dehydrated poultry protein, vegetable fibres, tapioca, wheat gluten\*\*, maize gluten, wheat flour, hydrolysed animal proteins, minerals, animal fats, chicory pulp, fish oil, psyllium husks and seeds, hydrolysed crustaceans (source of glucosamine), hydrolysed cartilage (source of chondroitin).

## ADDITIVES (KG)\*\*\*

Nutritional additives: Vitamin A: 23800IU, Vitamin D3: 900IU, E1 (Iron): 29mg, E2 (Iodine): 2.9mg, E4 (Copper): 9mg, E5 (Manganese): 37mg, E6 (Zinc): 112mg, E8 (Selenium): 0.04mg Preservatives - Antioxidants.

\*\*\* Values reflect only levels added to the formula, not those naturally occurring in components of the diet.



## CATS MIX FEEDING GUIDELINES

24H

### MIX: SATIETY CAT DRY + SATIETY CAT WET POUCH

IDEAL WEIGHT (kg)	POUCH	STAGE		
		START	IF NO LOSS AFTER 4 WEEKS*	SUGGESTED DAILY INTAKE AFTER WEIGHT LOSS
		DRY (g)	DRY (g)	DRY (g)
2	1+	10	5	13
3	1+	20	13	24
4	1+	28	21	34
5	1+	36	28	43
6	1+	44	35	52
7	1+	51	41	61
8	1+	58	47	69

\*Review the weight loss plan including: BCS, ideal weight, feeding volume and measuring before making any adjustments.



## WEIGHT MANAGEMENT CALCULATIONS

### HOW TO CALCULATE IDEAL BODY WEIGHT



BODY CONDITION SCORE	VARIATION FROM IDEAL BODY WEIGHT	CALCULATION
5	100% Ideal body weight	Ideal body weight
6	10% Overweight	$\frac{\text{Current body weight}}{1.1}$
7	20% Overweight	$\frac{\text{Current body weight}}{1.2}$
8	30% Overweight	$\frac{\text{Current body weight}}{1.3}$
9	40% Overweight	$\frac{\text{Current body weight}}{1.4}$

### CALCULATING PERCENTAGE WEIGHT LOSS

1 
$$\frac{\text{Weight lost}}{\text{Body weight at last weigh-in}} \times 100$$

2 Example: 
$$\frac{0.9}{33.6} \times 100 = 2.7\%$$




Divide by number of weeks on diet to get average weight loss per week

3  Safe weight loss:-  
**Dogs = 1-3% per week\***  **Cats = 0.5-2% per week**  
 Average weight loss for cats and dogs is 0.8% per week.

\*for the first 12 weeks

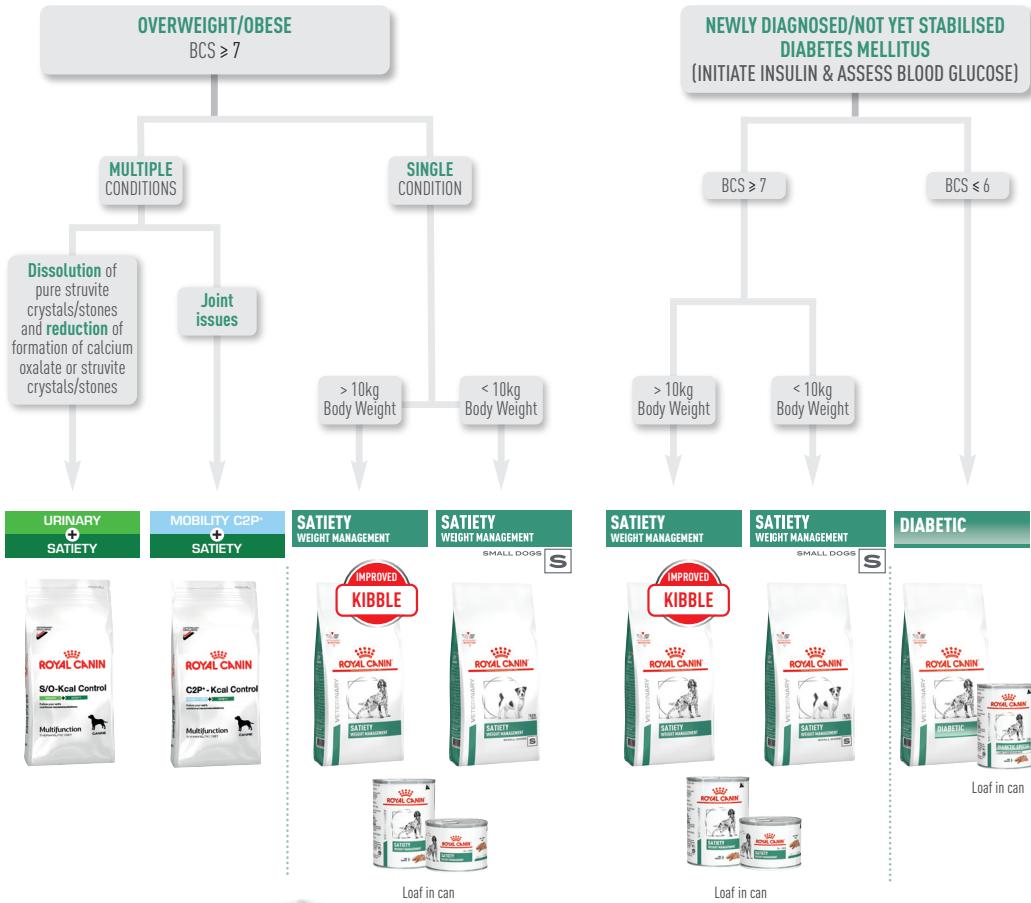
24H

### MIX: DIABETIC CAT DRY + DIABETIC CAT WET POUCH

CAT'S WEIGHT (kg)	POUCH	BODY CONDITION					
		 THIN		 NORMAL		 OVERWEIGHT	
		DRY (g)	DRY (240cm <sup>2</sup> )	DRY (g)	DRY (240cm <sup>2</sup> )	DRY (g)	DRY (240cm <sup>2</sup> )
2	1+	23	2/8	17	1/8	9	1/8
3	1+	38	3/8	29	3/8	18	2/8
4	1+	51	4/8	40	3/8	26	2/8
5	1+	64	6/8	50	4/8	33	3/8
6	1+	75	6/8	60	5/8	40	4/8
7	1+	87	7/8	70	6/8	47	4/8
8	1+	98	1	79	7/8	53	5/8
9	1+	108	1 + 2/8	88	1	60	5/8
10	1+	119	1 + 2/8	96	1	66	6/8



# CANINE NUTRITIONAL MANAGEMENT DECISION TREE



## SATIETY WEIGHT MANAGEMENT



Available in  
1.5, 6 and  
12kg bags

### RECOMMENDED DAILY INTAKE & FEEDING DURATION

ADULT DOG	DOGS WEIGHT (kg)*	STAGE		
		START	IF NO LOSS AFTER 4 WEEKS**	SUGGESTED DAILY INTAKE AFTER WEIGHT LOSS
		grams	grams	grams
	10	148	126	139
	12	169	145	159
	14	190	163	179
	16	210	180	198
	18	229	197	216
	20	248	213	234
	25	293	251	277
	30	336	288	317
	35	378	324	356
	40	417	358	393
	45	456	391	430
	50	493	423	465
	55	530	454	500
	60	566	485	533
	70	635	544	599
	80	702	602	662
	90	767	657	723

\*For dogs less than 10kg it is recommended to use Satiety Small Dog  
\*\*Review the weight loss plan including: BCS, ideal weight, feeding volume and measuring before making any adjustments.

**IDEAL WEIGHT** should be determined according to weight and BCS of the individual. The recommended daily intake is based on the pet's ideal weight. The starting ration may need to be adjusted during follow up visits. An objective of losing 1-3% bodyweight per week is generally achievable over the first 3 months, and of 0.5-2% afterwards.

**Maintenance Ration:** Energy requirements to maintain stable body weight after weight loss are lower than those of dogs that have never been obese. It is recommended to continue feeding the weight loss diet once ideal or target weight has been achieved. To maintain ideal weight, gradually increase the daily food intake until weight has stabilised. Maintenance rations may need to be adjusted based on the individual. If the dog regains more than 5% of body weight, the ration should be decreased to weight loss rations.

It is recommended to use a digital food scales for measuring daily food allowance and divide the daily food intake into a minimum of 2 meals.

**NOTE:** maintenance rations may need to be adjusted based on individual evolution. German AJ & al. Low-maintenance energy requirements of obese dogs after weight loss. British Journal of Nutrition (2011), 106, S93-S96.

## WEIGHT MANAGEMENT

### RECOMMENDED FOR WEIGHT LOSS / MAINTENANCE AFTER WEIGHT LOSS IN CASE OF

- Overweight/Obesity
- Diabetes Mellitus with overweight/obesity
- Hyperlipidemia with overweight/obesity

### NOT RECOMMENDED IN CASE OF

- Dogs with a history of constipation in response to a high fibre diet
- Growth, gestation/lactation



### EFFECTIVE WEIGHT MANAGEMENT

Adapted macronutrient profile helps provide safe weight loss and helps avoid weight regain. 97% of dogs lost weight in 3 months\*\*\*.



### BEGGING CONTROL

High natural fibre level helps keep dogs satisfied between meals. Helped control begging in 83% of dogs during weight loss\*\*\*.



### MUSCLE MASS MAINTENANCE

High protein content helps support healthy weight loss while maintaining muscle mass.

\*\*\*Flanagan J et al. Success of a weight loss plan for overweight dogs: the results of an international weight loss study. PLoS One 2017;12(9):e0184199.

KEY VALUES	Per 1000 kcal	Per 100g as fed
Protein	112.44g	30.0g
Fat content	35.61g	9.5g
Digestible Carbohydrates (starch)	63.34g	16.9g
NFE	106.07g	28.3g
Crude fibre	63.72g	17.0g
Dietary fibre	106.07g	28.3g
Omega 6	7.61g	2.03g
Omega 3	2.92g	0.78g
EPA + DHA	1.50g	0.40g
Calcium	3.37g	0.90g
Phosphorus	2.62g	0.70g
Sodium	1.12g	0.30g
Crude Ash	21.74g	5.8g
L-Carnitine	121.81mg	32.5mg
Glucosamine/Chondroitin	749.63mg	200mg

Metabolisable energy† 267kcal/100g as fed

† Calculated according to NRC2006TDF.

### COMPOSITION

Vegetable fibres, dehydrated poultry protein, wheat gluten††, tapioca, maize gluten, hydrolysed animal proteins, wheat, maize, animal fats, beet pulp, fish oil, minerals, psyllium husks and seeds, soya oil, fructo-oligo-saccharides, glucosamine, marigold extract [source of lutein], hydrolysed cartilage [source of chondroitin].

†† L.I.P. (Low Indigestible Protein): protein selected because of its very high assimilation.

### ADDITIVES (KG)†††

Nutritional additives: Vitamin A: 19000 IU, Vitamin D3: 1000 IU, Iron (3b103): 35 mg, Iodine (3b201, 3b202): 3.5 mg, Copper (3b405, 3b406): 11 mg, Manganese (3b502, 3b504): 46 mg, Zinc (3b603, 3b605, 3b606): 137 mg, Selenium (3b801, 3b811, 3b812): 0.06 mg - Preservatives - Antioxidants.

††† Values reflect only levels added to the formula, not those naturally occurring in components of the diet.



# SATIETY WEIGHT MANAGEMENT



LOAF

Available in  
195 and 410g can

## RECOMMENDED DAILY INTAKE & FEEDING DURATION BASED ON 410G

ADULT DOG	IDEAL WEIGHT (kg)	STAGE					
		START		IF NO LOSS AFTER 4 WEEKS*		SUGGESTED DAILY FOOD INTAKE AFTER WEIGHT LOSS	
		grams	can 410g	grams	can 410g	grams	can 410g
2	191	2/4	164	2/4	180	2/4	
4	321	3/4	275	3/4	303	3/4	
6	435	1	373	1	410	1	
8	540	1 + 1/4	463	1 + 1/4	509	1 + 1/4	
10	638	1 + 2/4	547	1 + 1/4	602	1 + 2/4	
15	865	2	741	1 + 3/4	815	2	
20	1,073	2 + 2/4	920	2 + 1/4	1,012	2 + 2/4	
25	1,268	3	1,087	2 + 3/4	1,196	3	
30	1,454	3 + 2/4	1,247	3	1,371	3 + 1/4	
35	1,633	3 + 2/4	1,399	3 + 2/4	1,539	3 + 3/4	
40	1,805	4 + 2/4	1,547	3 + 3/4	1,701	4 + 1/4	
45	1,971	4 + 3/4	1,690	4	1,859	4 + 2/4	
50	2,133	5 + 1/4	1,828	4 + 2/4	2,011	5	
55	2,291	5 + 2/4	1,964	4 + 3/4	2,160	5 + 1/4	
60	2,446	6	2,096	5	2,306	5 + 2/4	

\*Review the weight loss plan including: BCS, ideal weight, feeding volume and measuring before making any adjustments.

**IDEAL WEIGHT** should be determined according to weight and BCS of the individual. The recommended daily intake is based on the pet's ideal weight. The starting ration may need to be adjusted during follow up visits. An objective of losing 1-3% bodyweight per week is generally achievable over the first 3 months, and of 0.5-2% afterwards.

**Maintenance Ration:** Energy requirements to maintain stable body weight after weight loss are lower than those of dogs that have never been obese. It is recommended to continue feeding the weight loss diet once ideal or target weight has been achieved.

To maintain ideal weight, gradually increase the daily food intake until weight has stabilised.

Maintenance rations may need to be adjusted based on the individual. If the dog regains more than 5% of body weight, the ration should be decreased to weight loss rations.

## WEIGHT MANAGEMENT

### RECOMMENDED FOR WEIGHT LOSS / MAINTENANCE AFTER WEIGHT LOSS IN CASE OF

- Overweight/Obesity
- Diabetes Mellitus with overweight/obesity
- Hypertlipidemia with overweight/obesity

### NOT RECOMMENDED IN CASE OF

- Growth, gestation/lactation



### EFFECTIVE WEIGHT MANAGEMENT

Adapted macronutrient profile helps provide safe weight loss and helps avoid weight regain.



### BEGGING CONTROL

Nutritional profile that helps keep dogs satisfied between meals.



### MUSCLE MASS MAINTENANCE

High protein content helps support healthy weight loss while maintaining muscle mass.

KEY VALUES	Per 1000 kcal	Per 100g as fed
Protein	129.66g	8.0g
Fat content	32.41g	2.0g
Digestible Carbohydrates (starch)	38.90g	2.4g
NFE	64.83g	4.0g
Crude fibre	32.41g	2.0g
Dietary fibre	51.86g	3.2g
Omega 6	5.67g	0.35g
Omega 3	1.46g	0.09g
EPA + DHA	0.97g	0.06g
Calcium	2.27g	0.14g
Phosphorus	1.94g	0.12g
Sodium	1.94g	0.12g
Crude Ash	16.21g	1.0g
L-Carnitine	113.45mg	7mg
Glucosamine/Chondroitin	137.76mg	8.5mg
Moisture	1345.22g	83g

Metabolisable energy\*\* 62kcal/100g as fed

\*\*Calculated according to NRC2006TDF.



This product creates a urinary environment unfavourable to the formation of struvite and calcium oxalate stones.

## COMPOSITION

Pork by-products, poultry by-products, maize flour, pork blood products, powdered cellulose, dried beet pulp, fish oil, minerals, marigold extract (source of lutein), hydrolysed crustaceans (source of glucosamine), hydrolysed cartilage (source of chondroitin).

### ADDITIVES (KG)\*\*\*

Nutritional additives: Vitamin D3: 290IU, Iron (3b103): 6.5mg, Iodine (3b202): 0.2mg, Copper (3b405, 3b406): 1.8mg, Manganese (3b502, 3b503, 3b504): 2mg, Zinc (3b603, 3b605, 3b606): 20mg - Technological additives: Clinoptilolite of sedimentary origin: 1g.

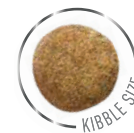
\*\*\* Values reflect only levels added to the formula, not those naturally occurring in components of the diet.

It is recommended to use a digital food scales for measuring daily food allowance and divide the daily food intake into a minimum of 2 meals.

**NOTE: maintenance rations may need to be adjusted based on individual evolution.** German AJ & al. Low-maintenance energy requirements of obese dogs after weight loss. British Journal of Nutrition (2011), 106, S93-S96.

# SATIETY WEIGHT MANAGEMENT

SMALL DOGS



Available in  
1.5, 3 and  
8kg bags

## RECOMMENDED DAILY INTAKE & FEEDING DURATION

ADULT DOG	IDEAL WEIGHT (kg)	STAGE		
		START	IF NO LOSS AFTER 4 WEEKS*	SUGGESTED DAILY FOOD INTAKE AFTER WEIGHT LOSS
		grams	grams	grams
2	44	37	41	
2.5	52	44	49	
3	59	51	56	
3.5	66	57	63	
4	73	63	69	
4.5	80	69	76	
5	87	74	82	
5.5	93	80	88	
6	100	85	94	
6.5	106	91	100	
7	112	96	105	
7.5	118	101	111	
8	124	106	116	
8.5	129	111	122	
9	135	116	127	
9.5	140	120	132	
10	146	125	138	

\*Review the weight loss plan including: BCS, ideal weight, feeding volume and measuring before making any adjustments.

**IDEAL WEIGHT** should be determined according to weight and BCS of the individual. The recommended daily intake is based on the pet's ideal weight. The starting ration may need to be adjusted during follow up visits. An objective of losing 1-3% bodyweight per week is generally achievable over the first 3 months, and of 0.5-2% afterwards.

**Maintenance Ration:** Energy requirements to maintain stable body weight after weight loss are lower than those of dogs that have never been obese. It is recommended to continue feeding the weight loss diet once ideal or target weight has been achieved. To maintain ideal weight, gradually increase the daily food intake until weight has stabilised. Maintenance rations may need to be adjusted based on the individual. If the dog regains more than 5% of body weight, the ration should be decreased to weight loss rations.

It is recommended to use a digital food scales for measuring daily food allowance and divide the daily food intake into a minimum of 2 meals.

**NOTE: maintenance rations may need to be adjusted based on individual evolution.** German AJ & al. Low-maintenance energy requirements of obese dogs after weight loss. British Journal of Nutrition (2011), 106, S93-S96.

\*\*Flanagan J et al. Success of a weight loss plan for overweight dogs: the results of an international weight loss study. PLoS One 2017;12(9):e0184199.

## WEIGHT MANAGEMENT

### RECOMMENDED FOR WEIGHT LOSS AND MAINTENANCE AFTER WEIGHT LOSS IN CASE OF

- Overweight/Obesity
- Diabetes Mellitus with overweight/obesity
- Hyperlipidemia with overweight/obesity

### NOT RECOMMENDED IN CASE OF

- Dogs with a history of constipation in response to a high fibre diet
- Growth, gestation/lactation



### EFFECTIVE WEIGHT MANAGEMENT

Adapted macronutrient profile helps provide safe weight loss and helps avoid weight regain. 97% of dogs lost weight in 3 months\*\*.



### BEGGING CONTROL

High natural fibre level helps keep dogs satisfied between meals. Helped control begging in 83% of dogs during weight loss\*\*.



### SPECIFICALLY FORMULATED FOR SMALL DOGS

Adapted formula to meet the specific digestive, dental and urinary sensitivities of small dogs.

KEY VALUES	Per 1000 kcal	Per 100g as fed
Protein	111.28g	30.0g
Fat content	35.24g	9.5g
Digestible Carbohydrates (starch)	61.94g	16.7g
NFE	106.08g	28.6g
Crude fibre	57.86g	15.6g
Dietary fibre	102.00g	27.5g
Omega 6	6.82g	1.84g
Omega 3	2.30g	0.62g
EPA + DHA	1.11g	0.30g
Calcium	3.38g	0.91g
Phosphorus	2.82g	0.76g
Sodium	2.60g	0.70g
Crude Ash	25.22g	6.8g
L-Carnitine	120.55mg	32.5mg
Glucosamine/Chondroitin	270.92mg	100mg
Magnesium	0.45g	0.12g

Metabolisable energy\*\*\* 270kcal/100g as fed

\*\*\*Calculated according to NRC2006TDF.



This product creates a urinary environment unfavourable to the formation of struvite and calcium oxalate stones.

## COMPOSITION

Dehydrated poultry protein, vegetable fibres, wheat gluten†, tapioca, hydrolysed animal proteins, chicory pulp, wheat, maize, maize gluten, animal fats, minerals, psyllium husks and seeds, fish oil, fatty acid salt, fructo-oligo-saccharides, marigold extract (source of lutein), hydrolysed crustaceans (source of glucosamine), hydrolysed cartilage (source of chondroitin).

† L.I.P. (Low Indigestible Protein): protein selected because of its very high assimilation.

### ADDITIVES (KG)††

Nutritional additives: Vitamin A: 19000IU, Vitamin D3: 1000IU, Iron (3b103): 34mg, Iodine (3b201, 3b202): 3.4mg, Copper (3b405, 3b406): 10mg, Manganese (3b502, 3b504): 44mg, Zinc (3b603, 3b605, 3b606): 136mg, Selenium (3b801, 3b811, 3b812): 0.05mg - Preservatives - Antioxidants.

†† Values reflect only levels added to the formula, not those naturally occurring in components of the diet.





# DIABETIC



Available in  
1.5, 7 and  
12kg bags

## RECOMMENDED DAILY INTAKE & FEEDING DURATION

ADULT DOG	DOG'S WEIGHT (kg)	BODY CONDITION					
		THIN		NORMAL		OVERWEIGHT	
		grams	cups	grams	cups	grams	cups
2	61	5/8	54	5/8	46	4/8	
4	103	1 + 1/8	91	1	78	7/8	
6	139	1 + 4/8	123	1 + 3/8	106	1 + 1/8	
8	173	1 + 7/8	152	1 + 5/8	131	1 + 3/8	
10	205	2 + 2/8	180	2	155	1 + 5/8	
15	277	3	244	2 + 5/8	211	2 + 2/8	
20	344	3 + 6/8	303	3 + 2/8	261	2 + 7/8	
25	407	4 + 4/8	358	3 + 7/8	309	3 + 3/8	
30	466	5	410	4 + 3/8	354	3 + 7/8	
35	523	5 + 5/8	461	5	398	4 + 2/8	
40	578	6 + 2/8	509	5 + 4/8	440	4 + 6/8	
45	632	6 + 7/8	556	6	480	5 + 2/8	
50	684	7 + 3/8	602	6 + 4/8	520	5 + 5/8	
55	735	8	646	7	558	6	
60	784	8 + 4/8	690	7 + 4/8	596	6 + 4/8	
70	880	9 + 4/8	775	8 + 3/8	669	7 + 2/8	
80	973	10 + 4/8	856	9 + 2/8	739	8	

DIABETIC is recommended as first line nutritional management for all newly diagnosed cases of Diabetes Mellitus until control of clinical signs and hyperglycemia have been achieved.

It is recommended to use a digital food scales for measuring daily food allowance.

**NOTE: The use of this food may affect the dog's sensitivity to insulin. It is highly recommended that blood glucose and insulin response are monitored when starting the diet so that insulin dosage can be adapted.**

# DIABETIC MELLITUS

## RECOMMENDED FOR CASES OF

- Diabetes Mellitus and a Body Condition Score (BCS) < 6/9
- Diabetes Mellitus and a BCS > 7/9, until glycemic control has been achieved after which transition to SATIETY for weight loss

## NOT RECOMMENDED IN CASE OF

- Growth, gestation/lactation



### GLUCOMODULATION

Specific formula utilising cereals with a low glycaemic index and selected fibres to help in the management of post-prandial blood glucose in diabetic dogs.



### HIGH PROTEIN

Helps reduce net energy supply and support maintenance of muscle mass essential in diabetic dogs.



### LOW STARCH

Formula contains a reduced level of starch to help limit post-prandial blood glucose.

KEY VALUES	Per 1000 kcal	Per 100g as fed
Protein	107.65g	37.0g
Fat content	34.91g	12.0g
Digestible Carbohydrates (starch)	55.57g	19.1g
NFE	86.41g	29.7g
Crude fibre	18.91g	6.5g
Dietary fibre	49.75g	17.1g
Omega 6	6.20g	2.13g
Omega 3	1.86g	0.64g
EPA + DHA	0.87g	0.30g
Calcium	2.62g	0.90g
Phosphorus	2.04g	0.70g
Sodium	0.87g	0.30g
Crude Ash	15.42g	5.3g
Essential Fatty Acids	6.0g	2.07g
L-Carnitine	58.19mg	20mg
Total Sugars	1.6g	0.55g

Metabolisable energy\* 331kcal/100g as fed

\*Calculated according to NRC2006CF.

## COMPOSITION

Dehydrated poultry protein, barley, wheat gluten\*\*, maize gluten, vegetable fibres, hydrolysed animal proteins, animal fats, beet pulp, tapioca, fish oil, psyllium husks and seeds, fructo-oligo-saccharides, minerals, marigold extract (source of lutein). Sources of carbohydrates: barley, tapioca.

\*\* L.I.P. (Low Indigestible Protein); protein selected because of its very high assimilation.

## ADDITIVES (KG)\*\*\*

Nutritional additives: Vitamin A: 15500IU, Vitamin D3: 1000IU, Iron [3b103]: 33mg, Iodine [3b201, 3b202]: 3.4mg, Copper [3b405, 3b406]: 10mg, Manganese [3b502, 3b504]: 43mg, Zinc [3b603, 3b605, 3b606]: 125mg, Selenium [3b801, 3b811, 3b812]: 0.05mg - Preservatives - Antioxidants.

\*\*\* Values reflect only levels added to the formula, not those naturally occurring in components of the diet.



# DIABETIC SPECIAL

## LOW CARBOHYDRATE



LOAF

Available in  
410g can

## RECOMMENDED DAILY INTAKE & FEEDING DURATION

ADULT DOG	DOG'S WEIGHT (kg)	BODY CONDITION					
		THIN		NORMAL		OVERWEIGHT	
		grams	can	grams	can	grams	can
2	257	3/4	226	2/4	195	2/4	
4	432	1	380	1	328	3/4	
6	585	1 + 2/4	515	1 + 1/4	445	1	
8	726	1 + 3/4	639	1 + 2/4	552	1 + 1/4	
10	858	2	755	1 + 3/4	652	1 + 1/4	
15	1163	2 + 3/4	1024	2 + 2/4	884	2 + 1/4	
20	1443	3 + 2/4	1270	3	1097	2 + 3/4	
25	1706	4 + 1/4	1502	3 + 3/4	1297	3 + 1/4	
30	1956	4 + 3/4	1722	4 + 1/4	1487	3 + 3/4	
35	2196	5 + 1/4	1933	4 + 3/4	1669	4	
40	2428	6	2136	5 + 1/4	1845	4 + 2/4	
45	2652	6 + 2/4	2334	5 + 3/4	2015	5	
50	2870	7	2525	6 + 1/4	2181	5 + 1/4	
55	3082	7 + 2/4	2713	6 + 2/4	2343	5 + 3/4	
60	3290	8	2895	7	2501	6	
70	3694	9	3250	8	2807	6 + 3/4	
80	4083	10	3593	8 + 3/4	3103	7 + 2/4	

DIABETIC is recommended as first line nutritional management for all newly diagnosed cases of Diabetes Mellitus until control of clinical signs and hyperglycemia have been achieved.

**NOTE: The use of this food may affect the dog's sensitivity to insulin. It is highly recommended that blood glucose and insulin response are monitored when starting the diet so that insulin dosage can be adapted.**

# DIABETIC MELLITUS

## RECOMMENDED FOR CASES OF

- Diabetes Mellitus and a Body Condition Score (BCS) < 6/9
- Diabetes Mellitus and a BCS > 7/9, until glycemic control has been achieved, after which transition to SATIETY for weight loss

## NOT RECOMMENDED IN CASE OF

- Growth, gestation/lactation



### GLUCOMODULATION

Specific formula utilising cereals with a low glycaemic index and selected fibres to help in the management of post-prandial blood glucose in diabetic dogs.



### HIGH PROTEIN

Helps reduce net energy supply and support maintenance of muscle mass essential in diabetic dogs.



### LOW STARCH

Formula contains a reduced level of starch to help limit post-prandial blood glucose.

KEY VALUES	Per 1000 kcal	Per 100g as fed
Protein	109.89g	9.0g
Fat content	48.84g	4.0g
Digestible Carbohydrates (starch)	19.54g	1.6g
NFE	50.06g	4.1g
Crude fibre	29.30g	2.4g
Dietary fibre	47.62g	3.9g
Omega 6	12.21g	1.00g
Omega 3	0.76g	0.06g
EPA + DHA	0.09g	0.007g
Essential Fatty Acid	10.99g	0.90g
Calcium	3.42g	0.28g
Phosphorus	2.56g	0.21g
Sodium	1.22g	0.10g
Crude Ash	18.94g	1.5g
L-Carnitine	56.82mg	4.5mg
Total sugars	8g	0.7g
Moisture	997.47g	79g

Metabolisable energy\* 79.2kcal/100g as fed

\*Calculated according to NRC2006TDF.

**[S/O® INDEX]** This product creates a urinary environment unfavourable to the formation of struvite and calcium oxalate stones.

## COMPOSITION

Pork by-products, poultry by-products, chicken meat, powdered cellulose, maize grits, pork blood products, sunflower oil, beet pulp, minerals, marigold extract (source of lutein).

## ADDITIVES (KG)\*\*

Nutritional additives: Vitamin D3: 180IU, Iron [3b103]: 3mg, Iodine [3b201, 3b202]: 0.3mg, Copper [3b405, 3b406]: 2mg, Manganese [3b502, 3b504]: 1mg, Zinc [3b603, 3b605, 3b606]: 10mg.

\*\* Values reflect only levels added to the formula, not those naturally occurring in components of the diet.





## URINARY + SATIETY

Available in  
3.5 and 9kg bags

## RECOMMENDED DAILY INTAKE &amp; FEEDING DURATION

ADULT DOG	TARGET BODY WEIGHT OF DOG	START		AFTER 4 WEEKS WITH NO WEIGHT LOSS	
		grams	cups	grams	cups
	2	44	4/8	37	4/8
	4	73	7/8	63	6/8
	6	99	1 1/8	85	1
	8	123	1 4/8	106	1 2/8
	10	146	1 6/8	125	1 4/8
	12	167	2	143	1 6/8
	14	188	2 2/8	161	1 7/8
	16	207	2 4/8	178	2 1/8
	18	227	2 6/8	194	2 2/8
	20	245	2 7/8	210	2 4/8
	25	290	3 4/8	249	3
	30	332	4	285	3 3/8
	35	373	4 4/8	320	3 6/8
	40	413	4 7/8	354	4 2/8
	45	451	5 3/8	386	4 5/8
	50	488	5 6/8	418	5
	60	559	6 5/8	479	5 6/8
	70	628	7 4/8	538	6 3/8
	80	694	8 2/8	595	7 1/8
	90	758	9	650	7 6/8

For nutritional management of dogs at risk of struvite stone recurrence and reduction of excess bodyweight: feed the diet up to 6 months and re-evaluate based on clinical assessment of the response. If a urinary tract infection is present S/O-Kcal Control Canine, combined with an antibacterial agent, should be fed for at least one month after a negative urine culture result has been obtained. For detailed guidance on weight reduction please see product information for Satiety Canine.

**RECOMMENDATIONS:** Target Weight should be determined according to Body Condition Score of the individual. The optimal weight loss rate is 1-3% bodyweight weekly. It is recommended to continue feeding the weight-loss diet once target weight is achieved. Energy intake should be gradually increased until weight has stabilised. Should the dog regain more than 5% of body weight, the daily ration should be decreased to weight loss levels. It is recommended to use a digital food scales for measuring daily food allowance and divide the daily food intake into a minimum of 2 meals.

**S/O® INDEX** This product creates a urinary environment unfavourable to the formation of struvite and calcium oxalate stones.

## LOWER URINARY TRACT DISEASE AND WEIGHT MANAGEMENT

## RECOMMENDED FOR CASES OF

Urinary disorders: • Recurrent struvite and calcium oxalate urolithiasis • Bacterial cystitis • Dissolution of struvite uroliths. In older dogs, renal function should be checked before S/O-Kcal Control Canine is recommended.

+ **Weight Management:** Obesity • Diabetes mellitus associated with obesity • Hyperlipidaemia associated with obesity

## NOT RECOMMENDED IN CASE OF

Pregnancy, lactation, growth • Chronic Kidney Disease • Heart disease (where sodium restriction is required) • Concurrent use of urine-acidifying drugs • Conditions where high fibre content is not recommended



## SATIETOGENIC EFFECT

Contains a special blend of fibres which have a satiating effect on dogs.



## HIGH PROTEIN

A high protein content (111 g/1000 kcal ME) helps maintain muscle mass throughout the weight loss period.



## URINE DILUTION

Urine dilution makes the urine less liable to form struvite and calcium oxalate stones.



## LOW RSS

Helps lower the concentration of ions contributing to struvite and calcium oxalate crystal formation.

KEY VALUES	Per 100g as fed
Protein	30g
Fat content	9.5g
Carbohydrate	16.9g
NFE	26.9g
Dietary fibre	26.7g
Crude fibre	16.7g
Omega 6	1.96mg
Omega 3	0.61mg
EPA+DHA	0.29g
Calcium	0.85g
Phosphorus	0.7g
Sodium	0.95g
L-Carnitine	30mg
Chondroitin sulphate + Glucosamine	100mg

Metabolisable energy\* 269.9Kcal

\* Calculated according to NRC2006.

## COMPOSITION

Dehydrated poultry protein, cellulose powder, wheat gluten\*\*, vegetable fibres, tapioca, wheat, hydrolysed animal proteins, chicory pulp, maize, animal fats, minerals, maize gluten, fish oil, psyllium husks and seeds, fatty acid salt, fructo-oligo-saccharides, soya oil, hydrolysed crustaceans (source of glucosamine), hydrolysed cartilage (source of chondroitin).

\*\* L.I.P. (Low Indigestible Protein): protein selected because of its very high assimilation.

## ADDITIVES (KG)\*\*\*

Nutritional additives: Vitamin A: 19800IU, Vitamin D3: 1000IU, E1 (Iron): 40mg, E2 (Iodine): 4mg, E4 (Copper): 12mg, E5 (Manganese): 52mg, E6 (Zinc): 154mg, E8 (Selenium): 0.07mg  
Preservatives - Antioxidants.

\*\*\* Values reflect only levels added to the formula, not those naturally occurring in components of the diet.



## MOBILITY C2P+ + SATIETY

Available in  
3.5 and 9kg bags

## RECOMMENDED DAILY INTAKE &amp; FEEDING DURATION

ADULT DOG	TARGET BODY WEIGHT OF DOG	START		AFTER 4 WEEKS WITH NO WEIGHT LOSS*	
		grams	cups	grams	cups
	2	42	4/8	33	3/8
	4	71	7/8	61	6/8
	6	96	1 + 1/8	83	1
	8	120	1 + 3/8	103	1 + 2/8
	10	142	1 + 6/8	121	1 + 4/8
	12	162	1 + 7/8	139	1 + 5/8
	14	182	2 + 1/8	156	1 + 7/8
	16	201	2 + 3/8	173	2
	18	220	2 + 5/8	189	2 + 2/8
	20	238	2 + 7/8	204	2 + 3/8
	25	281	3 + 3/8	241	3
	30	323	3 + 7/8	277	3 + 3/8
	35	362	4 + 2/8	310	3 + 6/8
	40	400	4 + 6/8	343	4 + 1/8
	45	437	5 + 2/8	375	4 + 4/8
	50	473	5 + 5/8	406	4 + 7/8
	60	543	6 + 4/8	465	5 + 4/8
	70	609	7 + 2/8	522	6 + 2/8
	80	673	8	577	6 + 7/8
	90	735	8 + 6/8	630	7 + 4/8

\*Review the weight loss plan including: BCS, ideal weight, feeding volume and measuring before making any adjustments.

For nutritional management of dogs with joint sensitivity and reduction of excess bodyweight. Maximum benefits of Mobility C2P+ are expected after 6 to 8 weeks feeding.

**TARGET WEIGHT:** should be determined according to Body Condition Score of the individual. The optimal weight loss rate is 1-3% bodyweight weekly.

**MAINTENANCE RATION:** It is recommended to continue feeding the weight-loss diet once target weight is achieved. Energy intake should be gradually increased until weight has stabilised. Should the dog regain more than 5% of body weight, the daily ration should be decreased to weight loss levels.

It is recommended to use a digital food scales for measuring daily food allowance and divide the daily food intake into a minimum of 2 meals.

**S/O® INDEX** This product creates a urinary environment unfavourable to the formation of struvite and calcium oxalate stones.

## MOBILITY AND WEIGHT MANAGEMENT

## RECOMMENDED FOR CASES OF

Mobility management: • Helps maintain mobility in dogs • Helps support the joints after an orthopedic surgery or a trauma  
+ **Weight management:** • Obesity • Overweight  
• Diabetes mellitus associated with obesity  
• Hyperlipidaemia associated with obesity  
**NOT RECOMMENDED IN CASE OF**  
• Pregnancy, lactation, growth  
• Chronic diseases requiring an increased energy intake



## INNOVATIVE C2P+ JOINT COMPLEX

Contains C2P+<sup>TM</sup> joint complex: an innovative synergistic combination of Curcumin, hydrolysed Collagen, and green tea Polyphenols.



## SCIENTIFICALLY PROVEN

High quality studies attest to the supportive function of Mobility C2P+<sup>TM</sup>.



## SATIETOGENIC EFFECT

Special blend of fibres that increase the volume of the stomach contents and promotes satiety.



## HIGH PROTEIN

A high protein content (103 g/1000 kcal ME) helps maintain muscle mass during a weight loss period.

KEY VALUES	Per 100g as fed
Protein	28g
Fat content	12g
Carbohydrate	17.2g
NFE	29.1g
Dietary fibre	28.2g
Crude fibre	16.3g
Omega 6	1.96mg
Omega 3	0.61mg
EPA+DHA	0.5g
Calcium	0.79g
Phosphorus	0.4g
Curcumin (Turmeric)	0.12g
Hydrolysed Collagen	1.2mg
Green Tea Polyphenols	61mg

Metabolisable energy\* 2781Kcal

\* Calculated according to NRC2006.

## COMPOSITION

Vegetable fibres, dehydrated poultry protein, wheat gluten\*\*, tapioca, maize gluten, animal fats, wheat, hydrolysed animal proteins, maize, beet pulp, fish oil, minerals, hydrolysed collagen (1.2%), psyllium husks and seeds, fructo-oligo-saccharides, soya oil, marigold extract (source of lutein).

\*\* L.I.P. (Low Indigestible Protein): protein selected because of its very high assimilation.

## ADDITIVES (KG)\*\*\*

Nutritional additives: Vitamin A: 15500IU, Vitamin D3: 1000IU, E1 (Iron): 38mg, E2 (Iodine): 3.8mg, E4 (Copper): 12mg, E5 (Manganese): 50mg, E6 (Zinc): 150mg, E8 (Selenium): 0.1mg  
Preservatives - Antioxidants. Sensory additives: Green tea extract (source of polyphenols: 2.4g, turmeric extract (Curcuma Longa L.): 1.2g.

\*\*\* Values reflect only levels added to the formula, not those naturally occurring in components of the diet.



## DOGS MIX FEEDING GUIDELINES



### MIX: SATIETY DOG DRY + SATIETY DOG WET CAN 195g

IDEAL WEIGHT (kg)	CAN	STAGE		
		START	IF NO LOSS AFTER 4 WEEKS*	SUGGESTED DAILY FOOD INTAKE AFTER WEIGHT LOSS
		DRY (g)	DRY (g)	DRY (g)
2	1+	22	15	19
4	1+	29	19	25
6	1+	55	41	50
8	1+	80	62	73
10	1+	102	81	94
15	1+	155	126	143
20	1+	203	168	189
25	1+	248	206	231
30	1+	291	243	272
40	1+	372	313	348
50	1+	448	378	420
60	1+	521	440	488

\*Review the weight loss plan including: BCS, ideal weight, feeding volume and measuring before making any adjustments.



### MIX: SATIETY SMALL DOG DRY + SATIETY DOG WET CAN 195g

IDEAL WEIGHT (kg)	CAN	STAGE		
		START	IF NO LOSS AFTER 4 WEEKS*	SUGGESTED DAILY FOOD INTAKE AFTER WEIGHT LOSS
		DRY (g)	DRY (g)	DRY (g)
2	1/2	21	15	19
4	1+	29	18	25
6	1+	55	41	49
8	1+	79	61	72
10	1+	101	81	93

\*Review the weight loss plan including: BCS, ideal weight, feeding volume and measuring before making any adjustments.



### MIX: SATIETY DOG DRY + SATIETY DOG WET CAN 410g

IDEAL WEIGHT (kg)	CAN	STAGE		
		START	IF NO LOSS AFTER 4 WEEKS*	SUGGESTED DAILY FOOD INTAKE AFTER WEIGHT LOSS
		DRY (g)	DRY (g)	DRY (g)
2	1/4	20	14	18
4	1/2	27	16	23
6	1/2	53	39	47
8	1/2	77	60	70
10	1+	53	32	44
15	1+	105	77	94
20	1+	153	118	139
25	1+	199	157	182
30	1+	242	193	222
40	1+	322	263	299
50	1+	399	328	370
60	1+	471	390	438

\*Review the weight loss plan including: BCS, ideal weight, feeding volume and measuring before making any adjustments.



### MIX: SATIETY SMALL DOG DRY + SATIETY DOG WET CAN 410g

IDEAL WEIGHT (kg)	CAN	STAGE		
		START	IF NO LOSS AFTER 4 WEEKS*	SUGGESTED DAILY FOOD INTAKE AFTER WEIGHT LOSS
		DRY (g)	DRY (g)	DRY (g)
2	1/4	20	14	18
4	1/2	27	16	22
6	1/2	53	38	47
8	1/2	77	59	70
10	1+	52	31	44

\*Review the weight loss plan including: BCS, ideal weight, feeding volume and measuring before making any adjustments.



## SMALL DOGS FEEDING GUIDELINES

### SATIETY DOG DRY UNDER 10KG

ADULT DOG	DOGS WEIGHT (kg)*	STAGE		
		START	4 WEEKS AFTER*	MAINTENANCE AFTER WEIGHT LOSS
	grams	grams	grams	
1	26	22	25	
1.5	36	30	34	
2	44	38	42	
2.5	52	45	49	
3	60	51	56	
3.5	67	58	63	
4	74	64	70	
5	88	75	83	
6	101	86	95	
7	113	97	106	
8	125	107	118	
9	136	117	129	
10	148	126	139	

\*Review the weight loss plan including: BCS, ideal weight, feeding volume and measuring before making any adjustments.



## DOGS MIX FEEDING GUIDELINES



### MIX: DIABETIC DOG DRY + DIABETIC LOW CARBOHYDRATE DOG WET CAN 410g

DOG'S WEIGHT (kg)	CAN	BODY CONDITION					
		THIN		NORMAL		OVERWEIGHT	
		DRY (g)	CUP (240cm <sup>3</sup> )	DRY (g)	CUP (240cm <sup>3</sup> )	DRY (g)	CUP (240cm <sup>3</sup> )
2	1/4	37	3/8	29	3/8	22	2/8
4	1/2	54	5/8	42	4/8	29	3/8
6	1/2	91	1	74	6/8	57	5/8
8	1/2	124	1 + 3/8	103	1 + 1/8	83	7/8
10	1+	107	1 + 1/8	82	7/8	58	5/8
15	1+	180	2	146	1 + 5/8	113	1 + 2/8
20	1+	246	2 + 5/8	205	2 + 2/8	164	2 + 6/8
25	1+	309	3 + 3/8	260	2 + 7/8	211	2 + 2/8
30	1+	369	4	313	3 + 3/8	257	2 + 6/8
40	1+	481	5 + 2/8	411	4 + 4/8	342	3 + 6/8
50	1+	586	6 + 3/8	504	5 + 4/8	422	4 + 5/8
60	1+	686	7 + 3/8	592	6 + 3/8	498	5 + 3/8
70	1+	782	8 + 4/8	677	7 + 3/8	571	6 + 1/8
80	1+	875	9 + 4/8	758	8 + 2/8	642	7





[WWW.ROYALCANIN.COM/UK](http://WWW.ROYALCANIN.COM/UK)

**NUTRITIONAL HELPLINE**

**+44(0)800 717800**